

# Welcome to the Pureit family



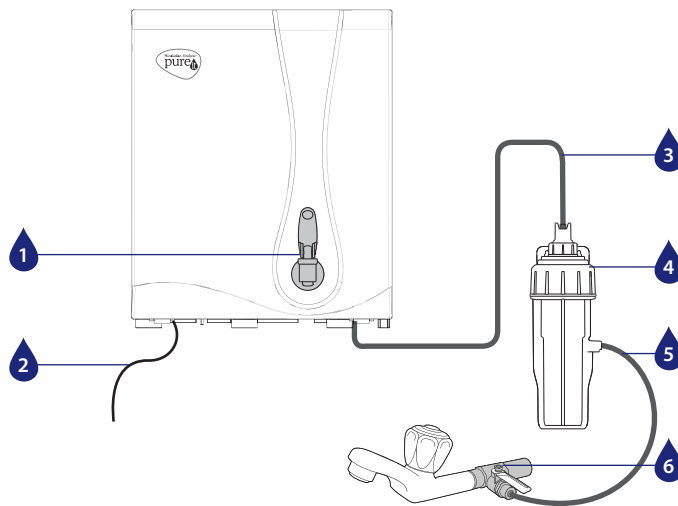
INSTRUCTION MANUAL

**NEW**

Attractive,  
Space Saving Design  
at Affordable Price



## KNOW YOUR PUREIT CLASSIC NXT RO+MF/UV\* PURIFIER



- 01. Tap
- 02. Reject Water Tube
- 03. Compound ESF Outlet Tube
- 04. Compound ESF

- 05. ESF Inlet Tube
- 06. Integrated Ball-valve Diverter

# UNIQUE FEATURES OF PUREIT CLASSIC NXT RO+MF/UV\* PURIFIER



**ADVANCED 6 STAGE PURIFICATION PROCESS WITH RO+MF/UV\***  
Every drop of water you drink is sweet and always safe.



**100% RO PURIFIED WATER**  
All water passes through RO ensuring no mixing of purified and impure water. Only RO can remove harmful chemicals like Lead, Mercury, etc.



**TURNS HARD WATER UP TO 2000 PPM INTO SOFT AND SWEET WATER**



**BEST-IN-CLASS WATER STORAGE CAPACITY OF 7 LITRES\*\***  
You will never run out of purified water.



**DOUBLE PURITY LOCK:**  
Advance Alert warns you 15 days before filter expiry  
Auto Shut Off stops water if filter is not changed  
100% guarantee of safe and sweet water.



**POWER SAVING MODE**  
Water purifier goes on stand-by once the tank is full, saving power.



**UNITED STATES ENVIRONMENT PROTECTION AGENCY (USEPA) COMPLIANT**  
Meets the toughest safety standards by removing 1 Cr virus and 10 Cr bacteria from 1L water.

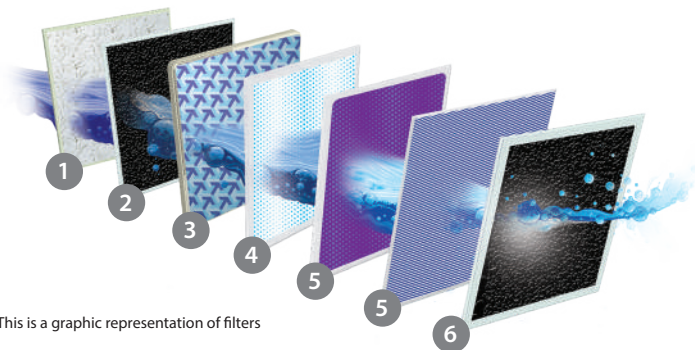


**100% FOOD GRADE PLASTIC\*\*\***  
Prevents harmful toxins from leaching into water, unlike non-food grade plastics.



\*Basis the water purifier purchased, it will either have UV or MF \*\*Best-in-class water storage among the class of branded Reverse Osmosis based in-home water purification devices under MRP. (incl of all taxes) of Rs. 10000 only. (7 Litres under running water conditions) \*\*\*Applicable for all water contact parts.

# PUREIT CLASSIC NXT RO+MF/UV\* PURIFIER'S ADVANCED PURIFICATION PROCESS



This is a graphic representation of filters

## 1. Pre-Sediment Filter

Removes fine and coarse particulate impurities/dirt and improves the life of the Carbon Filter.

## 2. Pre-RO Carbon Filter

Removes chlorine and organic impurities like harmful pesticides. It also absorbs bad taste and odour causing organic compounds from water.

## 3. Mini Filter

Removes remaining fine and coarse particulate impurities/dirt and improves life of RO Membrane.

## 4. RO Membrane

Removes dissolved salts, hardness, pesticides and heavy metals like arsenic, lead and mercury. It also removes microbial contaminants like bacteria, virus, protozoa and cysts.

## 5. UV Chamber OR Micro Filtration (MF) Membrane\*

**UV Chamber:** Acts as an additional stage of purification to further inactivate bacteria, virus and parasites to deliver safe water.

**MF Membrane:** Micro Filtration Filter is added Post-RO, which ensures that the water is purified not once but twice.

## 6. Post-RO Carbon Filter

This level of purification acts as a polisher and enhances the taste of purified water.

## INSTALLING YOUR PUREIT CLASSIC NXT RO+MF/UV\* PURIFIER

1. The purifier should be installed by a trained Pureit technician.
2. It can be wall-mounted or used as a table top purifier.
3. The purifier should be placed in area which is free of ants/insects/other pests.
4. The purifier should be placed close to the plumbed inlet connection (not more than 1.5 metres).
5. Do not install the purifier above any electric socket.
6. Avoid sharp bends to the pipes of the product.
7. Do not use an extension cord.
8. Before installing the purifier please check the inlet pressure.
9. Make sure you test the input water TDS (Total dissolved salts) before installing the purifier. The maximum input TDS should not exceed 2000ppm.
10. Do not connect the purifier to any hot water tap.
11. Please do not terminate the reject line tubing directly into the drainage (keep it hanging over the drainage).
12. Do not place the unit where it will be exposed to freezing and/or direct sunlight and ensure there is enough ventilation.

# TAKING CARE OF YOUR PUREIT CLASSIC NXT RO+MF/UV\* PURIFIER

## Cleaning

1. Clean the tap nozzle using disinfectants like bleach/hypochlorite (50 PPM available chlorine). Discard 2 litres of water after cleaning the dispenser.
2. Clean the external portion of the purifier using a dry cloth only. Do not use any detergent or soap.
3. Do not clean aggressively or rub the surface as this might lead to scratches on the parts.
4. Never splash water on the purifier while cleaning.
5. Do not try to open the purifier for cleaning or for any replacements. This can be done only by a qualified company personnel or an authorised agent.
6. You should maintain good hygiene in the area around your water purifier. Ensure that this area is free of ants/insects/other pests.
7. Do take care of the reject line and other tubes while cleaning the purifier else water can flow into the kitchen.

## Storage Tank

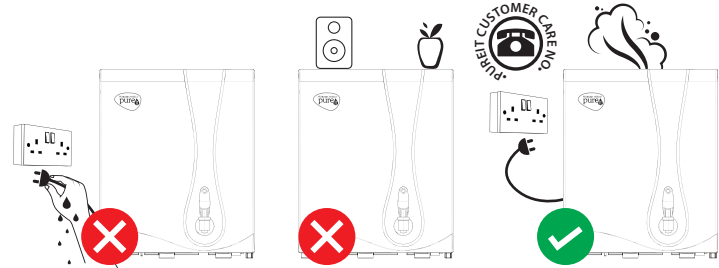
1. Discard the water in the Storage Tank once in 15 days through the tap.
2. Always drain the water in the Storage Tank if you have not used the purifier more than 2 days.
3. Do not allow any foreign or unexpected material (like dust/ants/insects/other pests) to enter into the storage tank. The filtered water in the storage tank may deteriorate in the process.

## Other Important Instructions

1. When you are away or during overhead tank cleaning always ensure to switch off the electrical power and the ball valve.
2. Do not put any heavy or sharp objects on the purifier.
3. Please dispose the used consumables like Sediment Filters, Carbon Filters and Membranes along with the other household waste through the municipal disposal system.

**Disposal Guidelines (Electrical):** To prevent possible harm to the environment or human health from uncontrolled waste disposal, please separate electrical items in this product such as power supply adaptor, control circuits, LED panel and wiring from other types of waste and recycle them responsibly to promote sustainable use of material resources. Contact either the retailer where you purchased this product or local government office for details of where and how these items can be taken for environmentally safe recycling.

# KEEP YOURSELF SAFE



1. Do not consume the water from the waste water tube for drinking purpose. However, you can use that water for gardening or cleaning the floors.
2. Do not plug or unplug the power cord with wet hands. Ensure that the plug isn't wet while plugging in, or plugging out to avoid risks such as electrical shock or fire.
3. Keep the cord away from wiring junctions to avoid hazard. Never put the cord under rugs, near heat resistors, radiators, stoves or heaters.
4. If the power cord is damaged, the power cord must be replaced and not used.
5. In case of any smoke or burning smell, remove the plug immediately and call the Pureit Helpline.
6. When shifting your house, get the purifier duly inspected and packed by the Pureit service technician. Remove water from the Storage Tank and pack the purifier properly in case of shifting.
7. Please ensure to switch off the power whenever you turn off the Ball Valve.
8. The point-of-use reverse osmosis drinking water treatment systems addressed by NSF-58 standard are designed to be used for reduction of specific substances that may be present in drinking water supplies (public or private) which are considered to be microbiologically safe and are of known quality.
9. The output water may continue to have flora which are harmless and pose no health hazard to normal healthy adults and children.

# TECHNICAL SPECIFICATIONS

## PUREIT CLASSIC NXT RO+MF/UV\*

Model	Pureit Classic Nxt RO+MF/UV*
Dimensions (HXWXD)	366mm x 300mm x 222mm
Weight (Complete Unit)	7 Kg
Flow Rate	Upto 10-12 LPH
Storage Tank Capacity	7 Litres <sup>1</sup>
6 Stage Purifying Technology	Pre-Sediment Filter, Pre-RO Carbon Filter, Mini Filter, Reverse Osmosis Membrane, UV Chamber or Micro Filtration Membrane and Post-RO Carbon Filter
Membrane Type	Thin film composite spiral wound
Pump Type	Diaphragm pump, 24V DC
% Recovery <sup>2</sup>	Upto 25%
TDS Reduction <sup>3</sup>	90% (min.)
Input Water	PH range 6.5-8.5, Temperature range 10°C- 40°C
Power Rating	36 Watts
Pressure Rating	10-30 PSI <sup>4</sup>
Input Voltage	100-300 V a.c., 50 Hz
Material of construction for plastic parts	Food safe, non-toxic plastics
Length of Power Cord	1.5 metres
Total Dissolved Solids in input water	Up to 2000 mg/lit <sup>5</sup>
Total Hardness	500 mg/lit (max.)
Iron in Input Water	0.3 mg/lit (max.)
Turbidity in Input Water	1 NTU (max.)

## Germkill Kit™ (GKK)

Material of Construction	Food safe, non-toxic plastics	
GKK	Pre-Sediment Filter - 1 No. Post-RO Carbon Filter - 1 No. RO Membrane - 1 No. Micro Filtration (MF) Membrane - 1 No. (only for Classic Nxt RO+MF)	Pre-RO Carbon Filter - 1 No. Mini Filter - 1 No.
Germkill performance standard	Meets stringent international criteria for microbiologically safe drinking water - e.g. Environmental Protection Agency (EPA), USA	

<sup>1</sup> 6.8 to 7.1 under running water conditions.

<sup>2</sup> Permeate flow rate and recovery are based on standard test conditions and may vary depending on input water quality, TDS, pressure and life of Filter elements.

<sup>3</sup> Input water quality and TDS content are important determinants of output water quality.

<sup>4</sup> If input pressure exceeds 30 PSI, please install a company provided pressure reducing valve at an additional cost.

If the pressure is less than 10 PSI then you need to buy 'Pressure enhancing pump' at an additional cost.

Device should not be installed in a house where input pressure is greater than 60 PSI.

Post-RO Carbon Filter fitted in the device may need to be changed intermittently at extra cost in case you face smell issues.

Technical specifications are subject to change or improvement without prior notice.

<sup>5</sup> In case the TDS is >1000 PPM, a company provided anti-scalant is recommended to be installed

This has to be purchased at extra cost.

<sup>6</sup> This is based on standard consumption of 10 litres per day, with an input TDS of 750 PPM, 25° water and 18 PSI pressure. Depending on the variation from above you may need to change the GKK / parts even before the stipulated time.

# UNDERSTANDING THE BUZZER INDICATION SYSTEM



**Sediment Filter Change**  
1 short beep every 60\* min



**Advanced Alert to Change Germ-kill Kit**  
2 short beeps every 15\* min



**Auto-shut Off / Replace Germ-kill Kit**  
No output water and  
2 short beeps every 15 min



**Fault Indication**  
Short – Long – Short beep  
every 1 min

\*Time mentioned is pump running time

Indication for sediment filter will occur to clean/replace sediment filter after approximately 197 hours of pump running time. You can either clean SF or call Pureit helpline to replace filters at a nominal cost.

Indication for GKK will occur to replace filter after approximately 385 hours of pump running time (typically gives 4000 liters of purified water under test conditions of 18 psi input pressure 750 TDS, 25°C, any variations in these test conditions may lead to change in ltered water volume). Please call Pureit helpline for assistance.

While the GKK and Sediment filter have fixed replacement schedule, you might be required to change the SF/GKK in the interim depending on quality of input water.

## FAQs

### How does Pureit Classic Nxt RO+MF/UV\* purify water?

Pureit Classic Nxt RO+MF/UV\* has a 6-stage purification process which ensures you to get water that is 'As Safe As Boiled Water' and also removes excess Total Dissolved Solids (TDS) to make your water tastier.

#### Stage 1st

**Pre-Sediment Filter:** Removes fine and coarse particulate impurities/dirt and improves the life of the carbon filter.

#### Stage 2nd:

**Pre-RO Carbon Filter:** Removes chlorine and organic impurities like harmful pesticides. It also absorbs bad taste odour causing organic compounds from water.

#### Stage 3rd:

**Mini Filter:** Filters water further to ensure removal of finer particulate impurities.

#### Stage 4th:

**RO Membrane:** Removes dissolved salts, hardness, pesticides, fluoride and heavy metals like arsenic, lead and mercury. It also removes microbial contaminants like bacteria, virus, protozoa and cysts.

#### Stage 5th:

**UV Chamber or Micro Filtration Membrane(MF)\*:**

**UV Chamber:** Acts as an additional stage of purification to further inactivate bacteria, virus and parasites to deliver safe water.

**MF Membrane:** Micro Filtration Filter is added Post-RO, which ensures that the water is purified not once but twice.

#### Stage 6th:

**Post-RO Carbon Filter:** Last level of purification acts as a polisher and enhances the taste of purified water.

### What is the storage capacity of Pureit Classic Nxt RO+MF/UV\*?

Pureit has Storage Tank capacity of upto 7 litres. The storage tank is fully automatic and well shielded and as and when you take water out of the tank, the purification

process starts automatically again and refills the storage tank.

### How much time does it take to purify water in Pureit Classic Nxt RO+MF/UV\*?

Pureit can purify water up to 10-12 litres per hour depending on the device you have purchased. However, the time taken to purify depends on the life of the filters, the input water pressure, TDS and other impurities present in the water.

### Does Pureit Classic Nxt RO+MF/UV\* remove arsenic, fluoride and nitrates?

Like other ions, the RO technology can also remove arsenic, fluoride and nitrates.

### How will I get new consumables/membranes replaced?

You need to call the Pureit helpline and order the consumables. The customer care specialist will visit your place and replace the consumable/Germkill Kit at a nominal cost.

### What are all the consumables which are to be replaced?

You need to replace / clean the sediment filter basis water quality and GKK approximately every 1 year from date of installation.

### Can I drink the first purification cycle of water from the purifier?

No, recommendation is to throw the first cycle of water that is filled in the storage tank when the new Pureit purifier is installed and also whenever the Germkill Kit are replaced.

### Can I open and service my purifier?

It is not recommended to open and service purifier by an individual. Call our Pureit helpline if you face any issue which requires servicing and opening of the purifier.

### Can I use reject water?

It is not recommended to use the reject water for any kind of human/pets consumption (drinking or cooking). It may

be used for gardening or cleaning floors.

### What should I do if any part of purifier is broken?

Please call the Pureit helpline. Our technicians will visit your house and guide you on the repairs required. There will be a nominal visiting charge and you would need to buy the parts required.

### What should I do if there is leakage from the purifier?

First switch off the ball valve if you find any leakage from the purifier and turn off the power switch. Check for any visual improper fitment and then call our Pureit helpline number and register a service request.

### How long the stored water in Pureit Classic Nxt RO+MF/UV\* can be used for drinking?

You can use stored water for 2 days. If it is not used for more than 2 days we advise you to discard that water, refill and then consume.





## WIDE RANGE OF RO PURIFIERS FROM PUREIT

Disclaimer: All images used in this manual are illustrative and the actual product may differ.