

**BIGG<sup>+</sup>**  
WET GRINDER



Perfectly  
made



User Guide  
&  
Warranty Card



Perfectly  
made

Visit [www.elgiultra.com](http://www.elgiultra.com)  
to shop for Ultra  
products & accessories



MIXER GRINDERS • WET GRINDERS • PRESSURE COOKERS



Dear Customer,

We're delighted to welcome you to the Ultra family of millions of happy customers worldwide.

You've made a smart and informed decision to invest in a perfectly made Ultra. Ultra products are inventive and aesthetically superb with a combination of good quality, precision and durability to help prepare the tastiest and healthiest meal.

Ultra assures you of trouble-free performance for years. However, in the unlikely event of any operational problem, we would be more than happy to assist you.



**ULTRA CUSTOMER CARE**

**1800 102 2040** (Toll Free)



[ultracare@elgiultra.com](mailto:ultracare@elgiultra.com)

Visit: [www.elgiultra.com](http://www.elgiultra.com)  
to find the nearest Ultra Care Centre

# PRODUCT INFORMATION



**BIGG<sup>+</sup>**

S.No.	Features	
1	Form	Table Top
2	Capacity	2.5L
3	Motor Wattage	150 watts
4	Voltage	230V, 50Hz
5	Grinding Stones	Conical
6	Drum	AISI-304 Rust-Resistant Food Grade Stainless Steel
7	Shell	ABS
8	Drum Shape	Cylindrical
9	Multi-Utility Drum	Yes
10	Power Surge Protector	Yes
11	Shock Proof	Yes
12	Stone Assembly weight	3.4 KG
13	Warranty	5 Years
14	Net Weight	14.6 kg
15	Product Dimension (mm)	527 x 298 x 286
16	Drum Size (mm)	ø251 x 180
17	Motor Speed (Rated without Load)	1350 RPM
18	Drum Speed (with Load)	135 - 140 RPM
19	Box Contents	Grinder Unit, User Guide and Batter Cleaner

## Recommended Measure and Grinding Time \*

Grinding Medium	Load Condition	Measurements before soaking	Soaking Time in Hrs	Water to be added
Rice (Raw / Boiled)	Minimum	220 gms	4	220 ml
	Maximum	1570 gms	4	1570 ml
Dhal	Minimum	90 gms	2	180 ml
	Maximum	390 gms	2	780 ml

1 cup (200 ml) – 180 gms of idly rice

1 cup (200 ml) – 180 gms of black gram

### Grinding Instructions

Rice and Dhal should be ground separately.

For better grinding result, do grind rice first and dhal next.

Do not use cut pieces of coconut; instead use only shredded coconut for grinding.

\*Results under lab test conditions and may vary with actuals

# HOW TO OPERATE YOUR ULTRA *BIGG*<sup>+</sup> TABLE TOP GRINDER



## Sequence of Operation

- |  |   |  |  |
|--|---|--|--|
|  | <p>1</p> <p>Wash and clean the drum and roller stone assembly</p>   |  | <p>2</p> <p>Place the drum on pulley coupler. Gently rotate till the drum fixes itself</p>   |
|  | <p>3</p> <p>Place the roller assembly in the drum in position as indicated above the drum</p>                             |  | <p>4</p> <p>Close the arm and press gently to lock automatically</p>   |
|  | <p>5</p> <p>Take a cup of water and pour it in to the drum</p>  |  | <p>6</p> <p>Press the switch downwards to turn on the grinder</p>  |
|  | <p>7</p> <p>Add the grinding medium in small quantities with adequate water and close the drum with hatch</p>             |  | <p>8</p> <p>When required consistency is achieved, switch off the grinder</p>  |
|  | <p>9</p> <p>Remove the hatch, hold the arm and press lock to release, then swing the arm upwards and rest it suitably</p> |  | <p>10</p> <p>Remove the roller stone assembly, place it on the batter cleaner as shown and rotate the stones to wipe down the batter into the drum</p> |
|  | <p>11</p> <p>Remove the drum and use required amount of batter. Store the rest in your refrigerator</p>                   | <p><b>Note:</b></p> <p>For pulse/cereals, always add in small quantities to ensure even grinding</p> |  |

# MAKE YOUR ULTRA *BIGG*<sup>+</sup> WORK LONGER



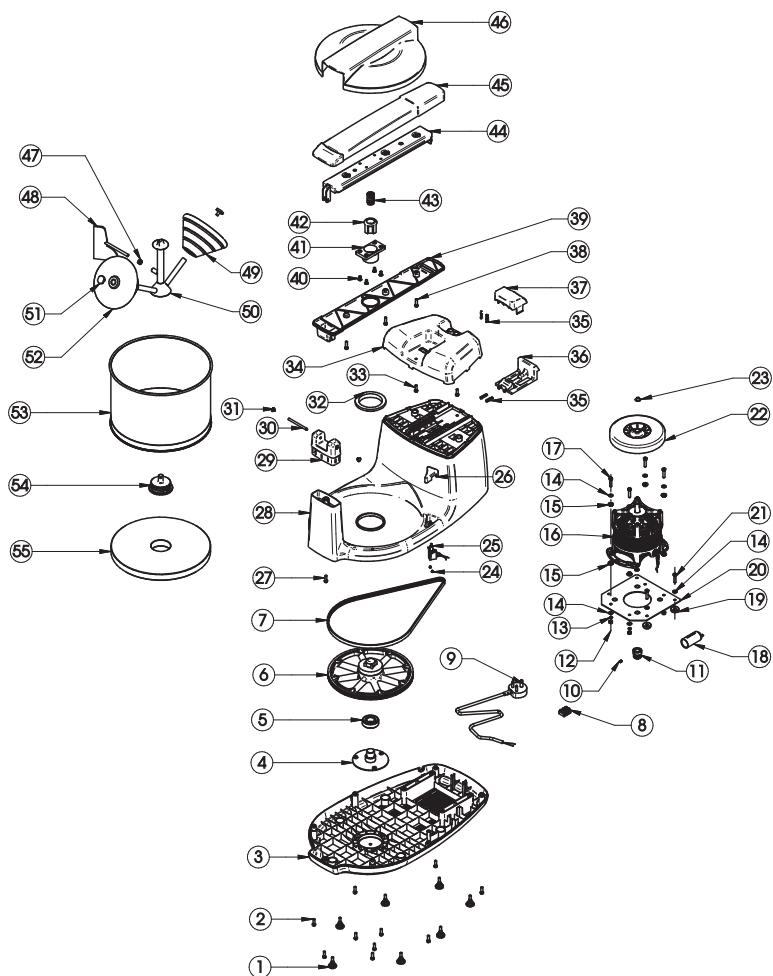
## DOs

- Make sure you keep your Ultra Wet grinder clean and dry, always
- When not in use, disconnect the electric cord from the mains
- For best results and trouble-free performance, use Ultra Wet grinder only as specified in this User Guide
- Be alert and cautious while operating in the presence of children and physically challenged persons
- Always keep your Ultra Wet grinder away from heat sources
- Lift the appliance at its base
- Clean the drum and roller assembly thoroughly after every use
- Ensure that the grinder is in unlocked position while not in use
- The wiper position should be as shown in the diagram printed on the arm

## DON'Ts

- Do not run the grinder empty for more than a minute
- Do not use any other attachments. Use only those recommended by us
- Do not put your hand into the drum while grinding
- Do not unlock the arm while in operation
- Do not insert sharp objects into the slits. This would damage the parts inside
- Do not lubricate any parts with oil/grease
- Do not keep the drum upside down after washing
- Do not attempt to repair the grinder yourself. If there's any fault, contact Customer Care

# EXPLODED VIEW OF ULTRA BIGG<sup>+</sup>



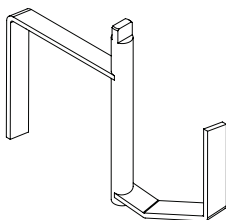




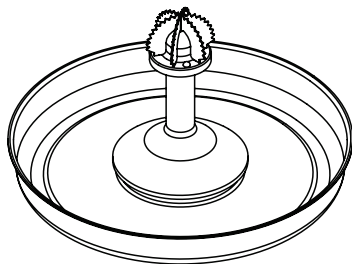
SL.No.	Part Name
1	Bottom shoe
2	Slotted CH Screw - M5X15 - IS:1366 - T - AISI 304
3	Base Frame
4	Bearing Stem
5	Deep Groove Ball Bearing 6004 ZZ
6	Driven Pulley
7	Poly V - Belt - 4PJ 858
8	Connector- 3 Way
9	Wire Cord - (230 V)
10	Hexagon Socket Grub Screw 'A' M5X6 Zinc Plated
11	Drive Pulley - 230V
12	Hexagon Nut M5
13	Spring Washer - M5
14	Plain Washer (ID5.5xOD11xT1) C15- Zinc Yellow Passivation
15	Vibro Mount
16	Motor (230V, 50Hz, 150W) Ultra
17	Hexagon Bolt M5X25 -IS: 1364 - T -AISI 304
18	Capacitor - 6MF
19	Vibro Mount
20	Motor Mounting Plate
21	Hexagon Bolt M5X20 -IS: 1364 - T - AISI 304
22	Motor Fan
23	Circlip A12
24	Phillip Head Self Tapping Screw NO.4X13 - AISI 304
25	Switch - 230 V
26	Switch Button
27	Slotted CH Screw - M5X15 - IS:1366 - T - AISI 304
28	Shell with Bracket Assy
29	Hinge Cover
30	Pin - Hinge
31	Hinge - Button
32	Collar Pad
33	Slotted CH Screw - M5X15 - IS: 1366 - T - AISI 304
34	Shell Top Cover
35	Lock Spring
36	Lock
37	Lock Button
38	Slotted CH Screw - M5X18 - IS:1366 - T - AISI 304
39	Channel Bottom Cover
40	Slotted CSK Head Screw - M5X10 - Type - A - IS:1365 - T - AISI 304
41	Housing
42	Sleeve
43	Main Spring
44	Arm Channel
45	Channel Top Cover
46	Hatch
47	Hex Nut - M6 - IS:1364 - T - AISI304
48	Wiper Assy
49	Tapper Roller Assembly. 3GR - I
50	Roller Holder Assy
51	Roller Lock Screw
52	Taper Roller Assembly. 3GR - II
53	Drum
54	Adaptor
55	Flat Stone

## **Additional Attachments (Optional)\***

**Atta Kneader**



**Coconut Scraper**



Visit **[www.elgiultra.com](http://www.elgiultra.com)**  
to watch the demo video

## TROUBLESHOOTING CHART

PROBLEM	REASON	SOLUTION
Grinder does not run	No power supply	Check mains
	Loose connection of wire cord	Contact Ultra Customer Care
Grinder starts but drum stops suddenly	Overloading of medium	Remove medium and add in small quantities
	Low belt tension	Contact Ultra Customer Care
Grinder is noisy	Insufficient water	Add water as required
	Incorrect wiper position	Check and correct the wiper position as printed on Arm lid
Takes more time to grind	Excess quantity, insufficient soaking time	Reduce quantity or check manual for correct grinding measures
	Incorrect wiper position	Check and correct the wiper position as printed on Arm lid
	Low voltage	Operate at 230 V Ac 50 Hz
	Low belt tension	Contact Ultra Customer Care
Grinder overheating	Motor housing air vents blocked	Use a dry brush to clean air vents
	External heat source	Keep the grinder away from external heat sources
Vibration	Uneven platform	Place the grinder on stable and horizontal platform
Grinder / Drum smells	Motor burnt	Contact Ultra Customer Care
	Drum / Roller Holder Assembly not cleaned well	Clean the drum / roller holder assembly
Grinder stops automatically when it is switched on	Faulty switch	Contact Ultra Customer Care
Arm does not lock	Roller assembly not cleaned well	Unscrew roller and clean under running water
	Roller not cleaned properly after use	Unscrew roller and clean under running water
Roller not rotating	Excessive loading/insufficient water	Remove excess medium
	Roller stuck on pin	Unscrew roller pin and clean

In case of abnormal operating conditions, contact Ultra Care Centre





## Warranty- Terms & Conditions

Elgi Ultra Industries Limited (hereinafter referred to as "the Company") guarantees this product for normal home use against defects in materials or workmanship for a period of 5 years from the date of original retail purchase. During the said period, the Company has the option to either repair or replace parts free of charge, if this product is returned personally or sent through prepaid courier to our Ultra Care Centres, along with proof of purchase and guarantee card duly filled in by the retailer.

The decision of the Ultra Care Centres in determining the cause of failure and repairs required to be carried out will be final and binding under this 5 years warranty and cannot be canvassed either by dealer or the retail purchaser on any ground whatsoever. The warrantor shall not be liable for any transportation cost or any damage due to or during transit of the product either way. Repaired units under warranty will be returned to the customer at his/her risk and on "to pay" freight basis.

This Warranty shall NOT apply:

- For wear and tear to the product
- For grinder hatch
- Involvement in an accident
- If the product is purchased from any unauthorised source
- If repairs or product modifications and/or alterations have been carried out by unauthorised service organisations or persons
- If the product is being used for commercial purposes
- If the defect is caused by abuse or misuse of the product or by environmental conditions that are not in conformance to the recommended operations of the product
- If the defect is caused by its connection to peripherals, additional equipment or accessories other than those recommended by Ultra
- If the warranty card and/or a purchase bill is not produced at the time of repair

In no event will the Company be responsible for any loss or damage, directly by or consequential to, careless, negligent handling or misuse of this product.



This Warranty is expressly in lieu of all other warranties expressed or implied (statutory or otherwise) and of all other obligations or liabilities on the Company's part. No person, agent, distributor, dealer, service centre or company is authorised to change, modify or extend the terms of this Warranty in any manner whatsoever.

The Company's liability under this Warranty is restricted to only repair of the product and does not involve any replacement, monetary payment or damages. Any doubt/disputed claim under this Warranty shall be subject to arbitration by an Arbitrator appointed only by the Company. The arbitration shall be at Coimbatore only.

**Please Note:**

- The Warranty is applicable only for purchase made through authorised dealers in the country of purchase
- The above Warranty is applicable only for materials/components and not for service/labour charges incurred in rectification/repair



## CHARGES APPLICABLE

Service Period	Spares	Service charges (Ultra service centre/doorstep)	Doorstep visiting charges
Up to 1 year within warranty	Free	Free	Free
After 1 year within warranty	Free	Free	₹100
Out of warranty	At Cost	₹250	₹100

Above charges are applicable only in India and is subject to change without any prior notice. Please check with Ultra Customer Care for prevailing charges.

Doorstep service is applicable only in India.



## FOR YOUR KIND ATTENTION

- Please read all instructions and warning before using this product. Keep this user guide, sales receipt and warranty for future reference and use.
- In case of any mechanical faults, call Ultra Customer Care. Do not attempt to repair it yourself
- This user guide provides important information on proper operation and maintenance. Every effort has been made to provide the details with as much accuracy as possible. We reserve the right to change or upgrade the product or any part thereof without prior notice.
- The instructions appearing in this guide are not meant to cover all possible conditions and situations that may occur. We urge you to exercise common sense, caution and care when setting or using this product.
- When unpacking check to make sure all parts listed is included. If you find anything missing or broken or damaged, kindly call Customer Service.
- The design, specifications and price are subject to change without prior notice.



Perfectly  
made



/ultraappliances



/ultraappliances



/ultra\_appliances

The Ultra social media broadcasts are full of recipes and tips on healthy, delicious food. From daily updates to interesting engagements on special days, our content is something you mustn't miss. What's more, there are also lots of contests and exciting prizes to look forward to!

# WARRANTY CARD\*

Please retain this limited warranty card and present the same  
to the Ultra Service Technician / Customer Care  
Centre for availing warranty service.

5

YEAR  
WARRANTY

(Valid In The Country Of Purchase)

Ultra **BIGG<sup>+</sup>** Wet Grinder

Name:

Full postal address:

Bill No.:

Date of purchase:

Serial No.:

Month of manufacture:

Dealer's stamp:

(Please ensure dealer stamp and serial number is duly filled in to secure warranty repair service)

## ELGI ULTRA INDUSTRIES LIMITED

No. 1435 (PART), India House, Trichy Road, Coimbatore- 641 018, Tamil Nadu, India.

 0422 2304141  0422 2301377



[www.elgiultra.com](http://www.elgiultra.com)



[/ultraappliances](https://www.facebook.com/ultraappliances)



[/ultraappliances](https://www.youtube.com/ultraappliances)



[/ultra\\_appliances](https://www.instagram.com/ultra_appliances)



**Customer Care**

Toll Free No: 1800 102 2040



[ultracare@elgiultra.com](mailto:ultracare@elgiultra.com)