

ezyLite Camera

Quick Operation Guide

EZ-S31/S41

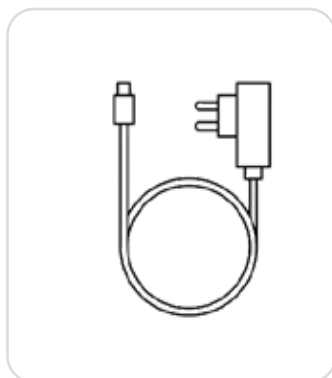
Thank you for choosing CP Plus ezyLite camera.

Get Started using your new device by downloading ezyLiv app, one convenient app that manages everything straight from your smart phone. Easily connect to your home Wi-Fi network and control multiple devices from the touch of your fingertips.

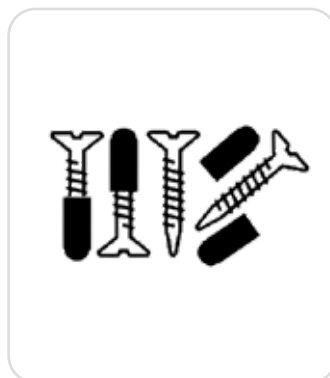
What's in the Box



ezyLite Wi-Fi Camera



Power Adapter



Screws

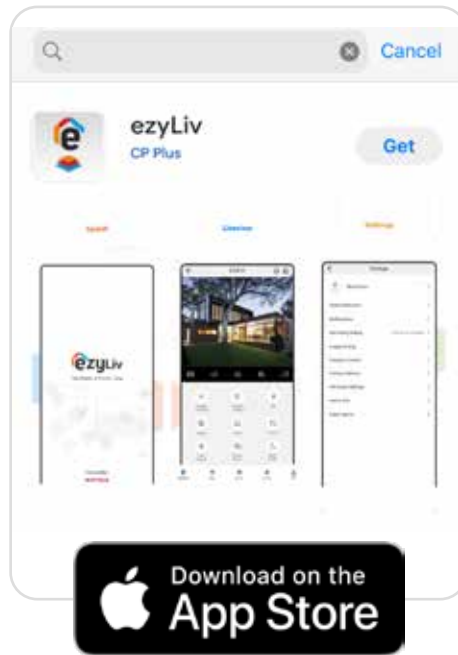
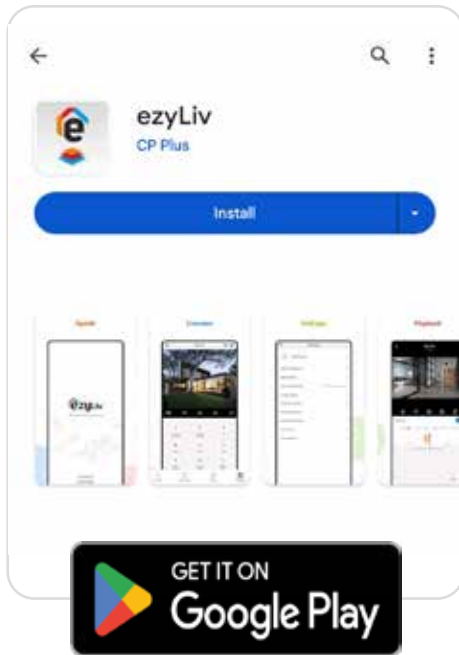


**Scan QR Code to
Download Quick
Installation Guide**

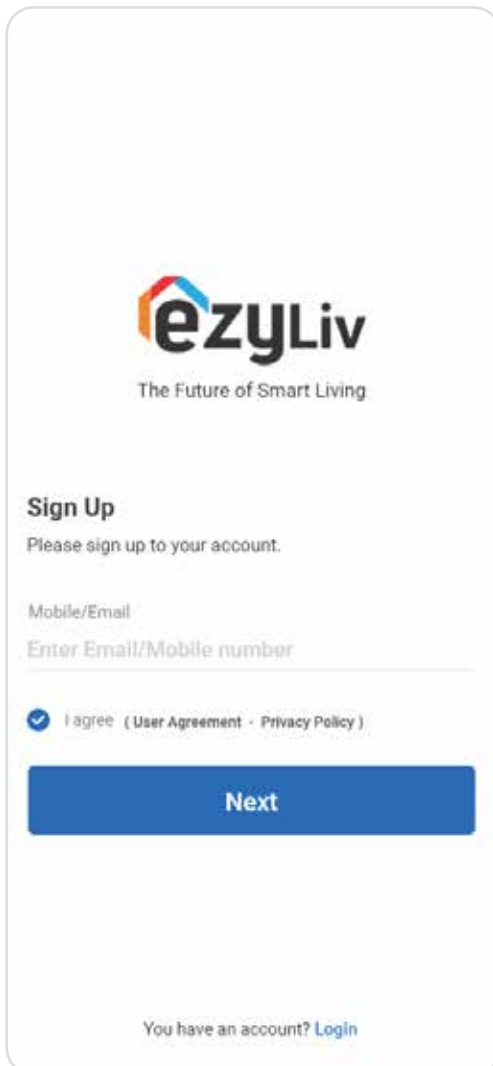
Get Ready

- Know your Wi-Fi network and password.
- Make sure your mobile device is running iOS 12 or higher or Android 10 or higher.
- Make sure you're connecting to a 2.4GHz Wi-Fi network (It can't connect to 5GHz networks).

1. Download the ezyLiv app from App Store or Google Play.



2. Register your account on ezyLiv application.

A screenshot of the ezyLiv registration screen. At the top is the ezyLiv logo and the tagline 'The Future of Smart Living'. Below this is the heading 'Sign Up' and the instruction 'Please sign up to your account.' There is a text input field labeled 'Mobile/Email' with the placeholder text 'Enter Email/Mobile number'. Below the input field is a checked checkbox with the text 'I agree (User Agreement - Privacy Policy)'. At the bottom is a large blue button labeled 'Next'. At the very bottom, there is a link that says 'You have an account? Login'.

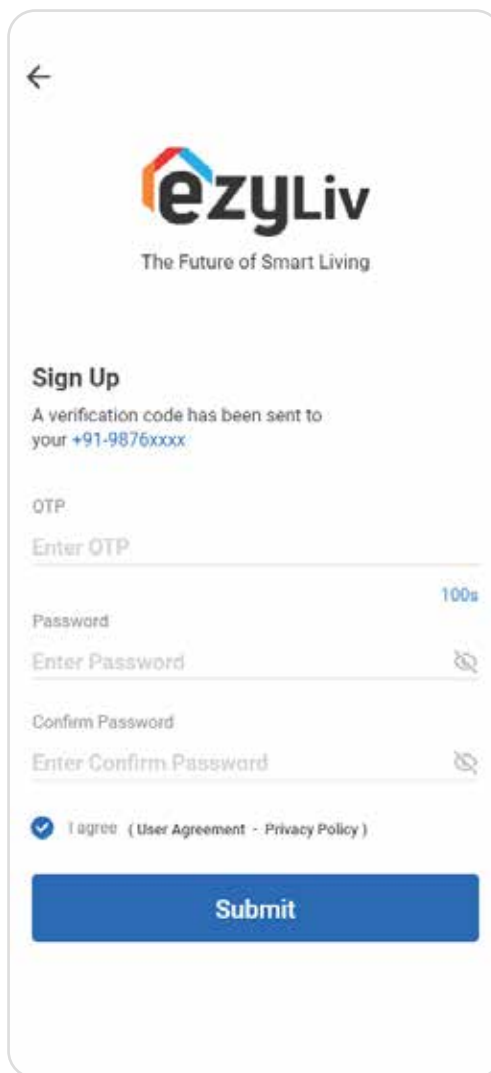
STEP 1

Enter the email address/Mobile number.

3. Plug in

STEP 2

Enter the verification code and create a password.



3. Plug in

How do I reset my camera?

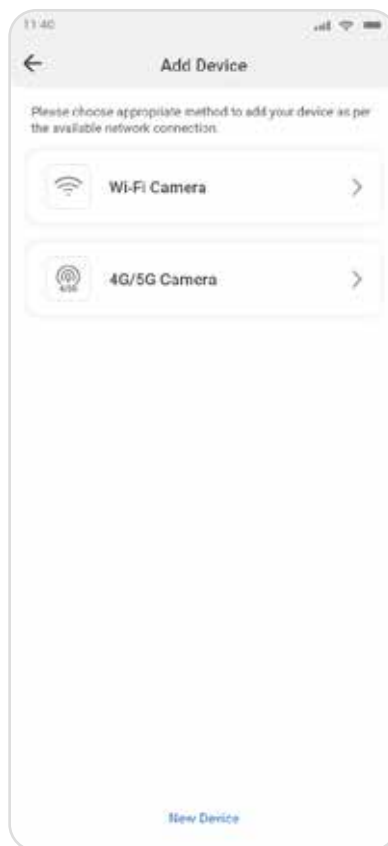
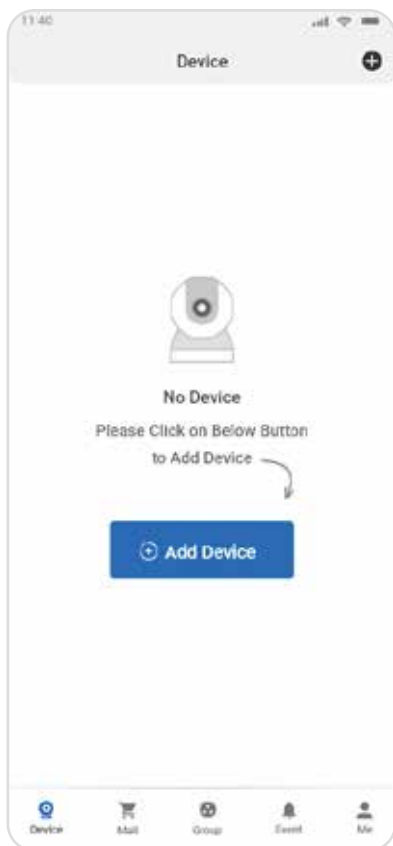
Press the reset button for 15 seconds until you hear the beep.

Optional: Insert Micro SD card.

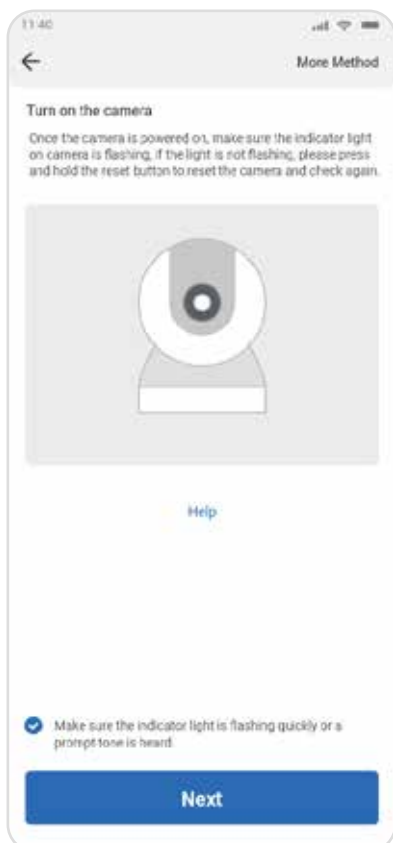


4. Add Camera

Open ezyLiv app, click “+” on the top right corner the "DEVICE" page, then select "Specific Device type to add". Reset the device and make sure voice prompt is audible.



Enter your “Wi-Fi SSID and password”, and click “Next”.



4.1 Add Camera

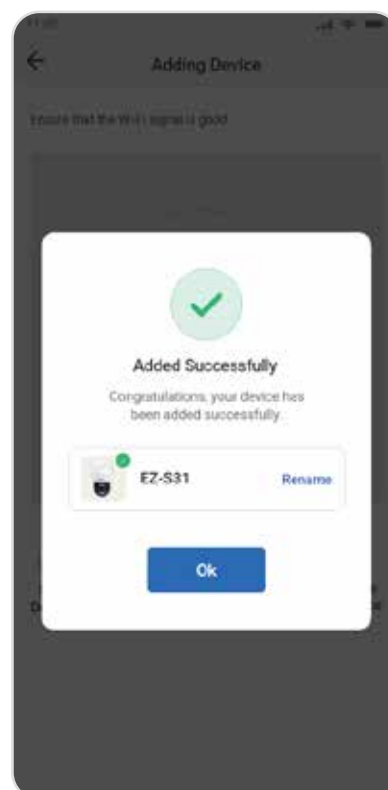
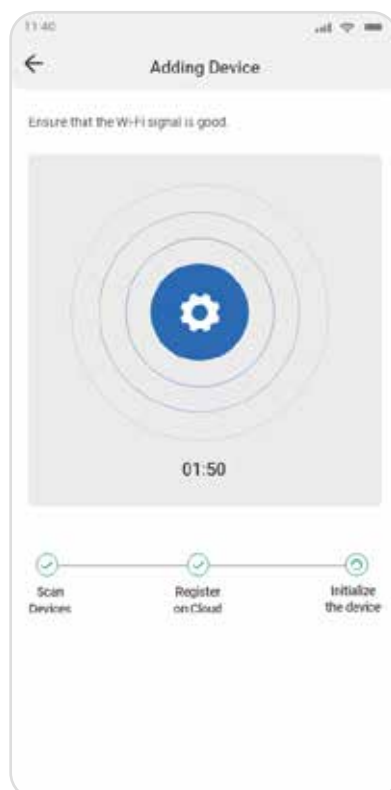
Read the instruction about "Scan QR code and click "Next".

Scan the QR Code on your phone with camera. You will hear beep or a voice prompt, then click "Yes, Heard".



4.2 Add Camera

When the indicator light the device turn to steady blue light or you see "Device added successfully in application", the network configuration is complete and device is added.



2. Register your account on ezyLiv application.

1. Can I share camera with family and friends?

Yes, you can share your camera with family and friends who will have access to view the camera.

2. What's the Wireless Range?

The range of your home Wi-Fi is heavily depended on your home router and the conditions of the room. Check your router specifications for exact range.

3. The camera appears offline or unreachable.

Make sure you entered the correct Wi-Fi password during the Wi-Fi setup. Check whether there is any Internet connection problem. If the Wi-Fi signal is weak, reset your Wi-Fi router and try again.

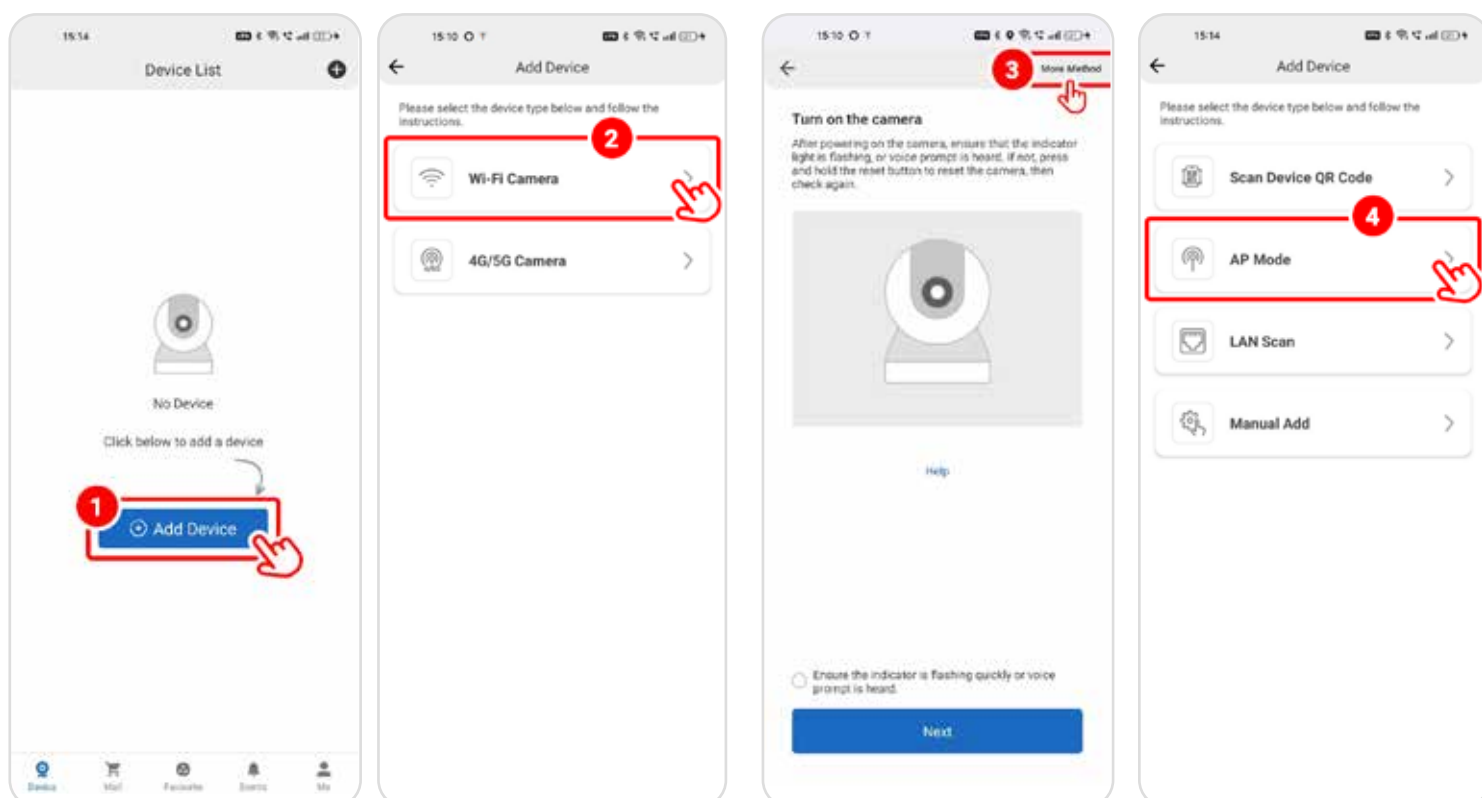
4. Does ezyLite camera support AP mode.

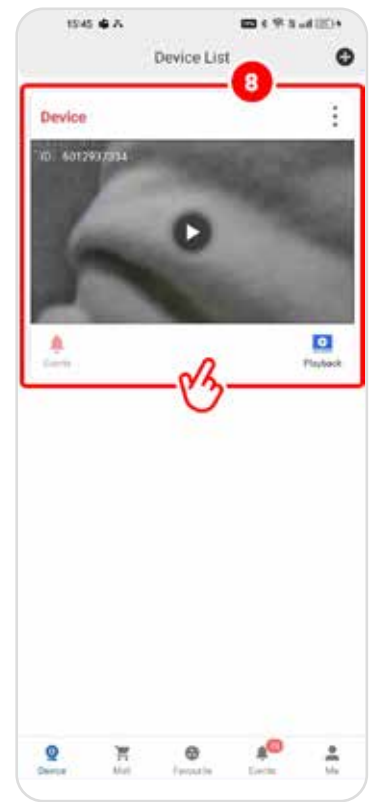
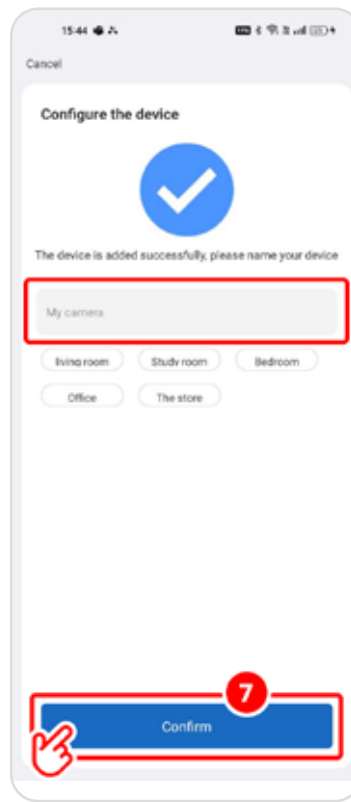
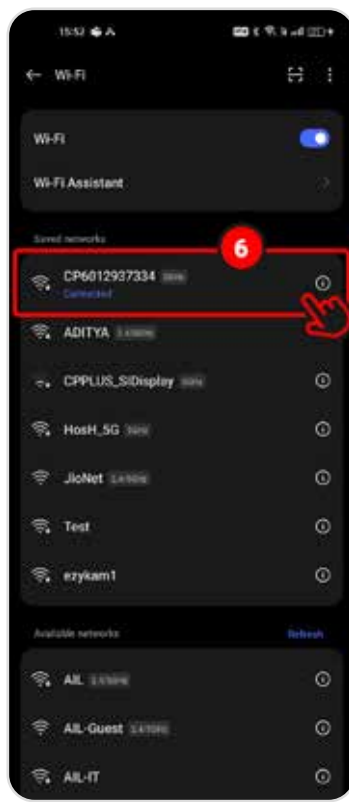
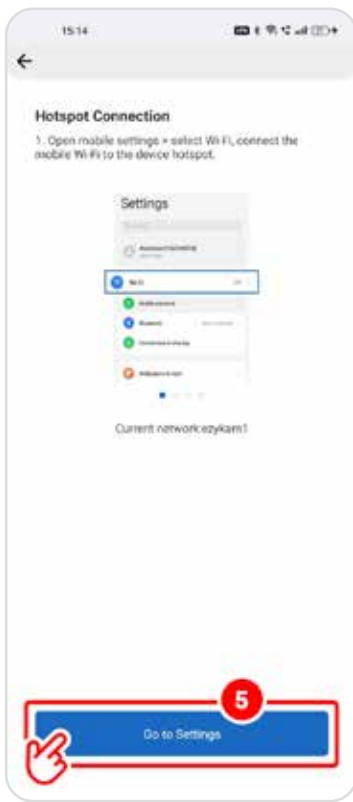
Yes, ezyLite camera support AP mode, if camera is connect to internet already then you need to reset the camera to enable AP mode and follow the steps in application after selecting AP mode to add the camera.

Make sure camera is reset and camera is giving voice prompt "waiting for wi-fi connection"

Procedure:

1. Tap on Add Device.
2. Select WI-Fi camera.
3. Tap on More Method (right-top screen)
4. Select AP Mode.
5. Now Tap on Go to Setting on hotspot setting screen, It will redirect you to Mobile Wi-Fi settings.
6. In Wi-Fi setting, It will show the Camera Hotspot SSID (CPxxxxxx). Select the camera Hotspot and input password "CP123456". Once Mobile phone is connected to camera hotspot then go back to application.
7. Application will show option to set camera name.
8. Set name for camera and tap on confirm, Now you can access the camera offline in application.





5. How many cameras can I control?

ezyLiv app can control unlimited number of cameras in unlimited number of locations. Your router may have a limit of how many cameras can be connected to one router.

6. How can I access my camera without internet in application?

You can access ezyLite camera in ezyLiv application without internet. After resetting your camera, select the model in application and choose AP mode and follow the steps.

System Requirements

- Make sure your mobile device is running iOS 12 or higher or Android 10 or higher.
- Existing Wi-Fi Network with internet connection.

Technical Specifications

- **Resolution:**
 - S31 = 2304x1296@25fps. H.265 encoding
 - S41 = 2560x1440@20fps. H.265 encoding
- **Field of view:**
 - S31 = 76°(H), 42°(V), 90°(D)
 - S41 = 76°(H), 42°(V), 90°(D)
- Audio Internal Speaker and Microphone.
- **Storage:** supports up to 256GB Micro SD card (not Included).
- **Wi-Fi:** IEEE 802.11b/g/n, 2.4GHz (not compatible with 5GHz Wi-Fi networks).



The Future of Smart Living with ezyLiv Cloud.

For further assistance, you can reach us via

ezycare@cpplusworld.com

****Please read the instruction carefully before using the product****