

Pre-instruction Literature

On Receipt

It is our policy to promote safe delivery of all orders. This product shipment has been thoroughly checked, packed and quality certified before leaving our factory.

Visible Loss or Damage

If any of the goods called for on the bill of lading or express receipt are damaged or the quantity is short, do not accept them until the freight or express delivery agent makes an appropriate notation on your freight bill or receipt.

Concealed Loss or Damage

When a shipment has been delivered to you in apparent good condition, but upon opening the packaging if any loss or damage has taken place while in transit, inform the carrier's agent / A. O. Smith representative immediately.

About this manual

This manual is a guide to good practice for operating and periodic maintenance of the A. O. Smith Elegance Water Heater. Do not operate the Water Heater before reading the user manual.

Please follow instructions in this manual to ensure personal safety and proper operation of this product. Always install, operate, inspect and maintain this product in accordance with all applicable standards. Please store this user manual carefully for any future reference.

Disposal of this Product

(Waste Electrical and Electronic Equipment)



This marking on the product, accessories or User Manual indicates that the product and its electronic accessories (e.g. Remote, batteries and other replaceable electronic accessories) should not be disposed of with other household waste at the end of their working life. To prevent possible harm to the environment or human health from uncontrolled waste disposal, please separate these items from other types of waste and recycle them responsibly to promote the sustainable re-use of material resources.

Household users should contact their local government office, for details of where and how they can take these items for environmentally safe recycling. This product and its electronic accessories should not be mixed with other commercial wastes for disposal.

1

General Instructions

Safety

Your safety and the safety of your loved ones is paramount. There are several safety related messages in this manual, which have been provided during various steps such as the installation, operation and maintenance of your Elegance Water Heater. These messages point out potential hazards and also educate on how to reduce any potential risks. Please always read and follow all safety messages as provided in this user manual.

	This is the safety alert symbol. This symbol alerts you to potential hazards that can hurt you and others. All safety messages will follow the safety alert symbol and either the word "DANGER" or "WARNING".
	Indicates an imminently hazardous situation which, if not avoided, will result in death or serious injury.
	Indicates a potentially hazardous situation, which if not avoided, could result in death or serious injury.
	Indicates a potentially hazardous situation which, if not avoided, may result in minor or moderate injury or property damage.

WARNING

Do not use this Water Heater if any part has been under water. Immediately contact an Authorised Service Technician to inspect the Water Heater and replace any part of the control system which has been under water. Failure to follow this instruction can result in property damage, serious injury or death.

IMPORTANT

These instructions have been written as a guide for the proper installation and operation of your Water Heater. A. O. Smith will not accept any liability where these instructions have not been followed. However, for your safety and to avoid damage caused by improper installation, it is recommended that Water Heater must be installed by an Authorised Service Technician.

Before proceeding with the installation instructions:

1. Inspect the Water Heater and its component parts for possible damage. Do not install or attempt to repair any damaged component parts. If you detect any damage in the Water Heater, please contact the dealer where the Water Heater was purchased or call Customer Care Centre.
2. Verify that the voltage being supplied corresponds to that which is marked on the Water Heater manual.

2

A. O. Smith Advantage...



Longer life in toughest water conditions with Blue Diamond® Glass Lined Tank.



Long lasting performance with glass coated incoloy heating element.



Easy access temperature control knob for choice of bathing water 25°C - 75°C.



Compact size ergonomically and aesthetically designed water heater.



Double Protection for your family with Thermal cutout and safety valve



Long-lasting Anode Rod with 2X lifespan even in hard water conditions.

Note: A. O. Smith reserves the right to amend or modify the specifications and features at any time, as and when required without any prior notification.



Product colour and image shown may vary from the actual product.
Part No. : 335271-100_A Date: 11-06-2021



Water Heater
elegance
15 and 25 Litres

elegance



User Manual

Specifications

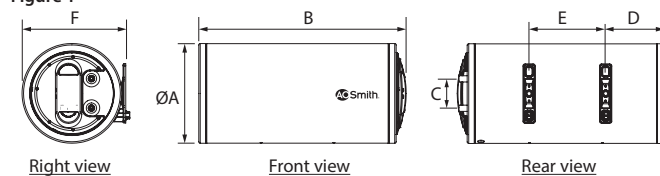
Model		Elegance	
Volume [L]		15	25
Power [W]		2000	
Voltage/Frequency [V/Hz]		230~/50	
Actual Stdg. Loss [kWh/24h/45°C diff.]		0.461	0.562
Reheating time for 35°C rise [in min.]		16	23
Temperature range [°C]		25-75*	
Rated water pressure	N/cm ²	80	
	Water head (metres)	80	
Inlet/Outlet connections [inch]		½ BSP	
Net Weight (kgs.)		11.6	15.5

*The maximum set temperature may vary $\pm 5^{\circ}\text{C}$.

Dimensions

Model	15 L	25 L	Model	15 L	25 L
A (mm)	338	338	D (mm)	180	193
B (mm)	509	704	E (mm)	120	260
C (mm)	100	100	F (mm)	352	352

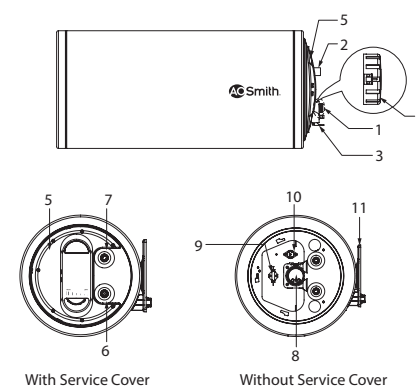
Figure 1



Note: The above configuration is also available in Left Hand Side (LHS) models.

3

Figure 2



Note: The above image shown is Right Hand Side model.

PART	DESCRIPTION	PART	DESCRIPTION
1	Cold water inlet	8	Heating element and Anode
2	Hot water outlet	9	Thermostat
3	Multi-function safety valve	10	Thermal cut-out
4	Temperature control knob	11	Wall mount bracket
5	Service cover	12	Glass wool +
6	Blue sticker	13	Wire harness and routing +
7	Red sticker		

+ Not illustrated for clarity purpose.

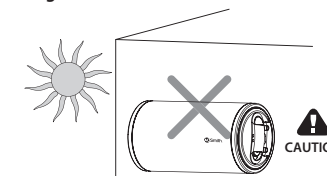
4

Safety Precautions

During Installation

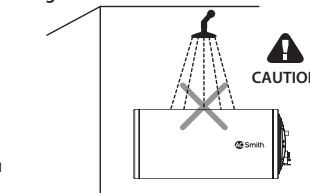
Do not install the Water Heater where there is direct sunlight or rain. It is has to be installed indoor only.

Figure 3



Do not install the Water Heater where water splashes on the Water Heater.

Figure 4



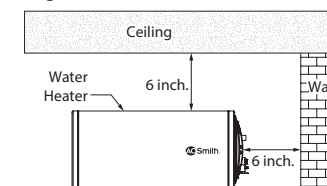
Installation

Before installing, ensure the tools Adjustable wrench, Teflon tape, Measuring tape, Hammer, Bubble level indicator and Impact drill tool are available.

Mounting the Water Heater

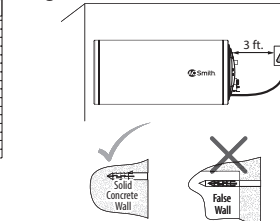
- It is recommended as per IS302-1 to have 6 inches clearance from wall.
- Select a place to mount Water Heater horizontally with water connection at the bottom.

Figure 5



- Water Heater must be located within 3 ft. (approx.) from a 230 V electrical outlet with proper grounding.
- Make sure that the wall can withstand at least twice the weight of the Water Heater when completely filled with water.

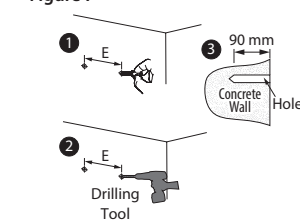
Figure 6



5

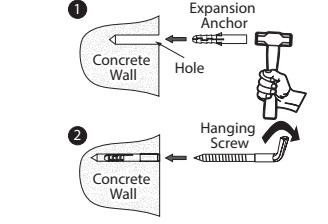
Use a drill bit with diameter of 12 mm to drill 2 holes at least 90 mm deep in the wall (Step 3). The two holes should be aligned horizontally. The horizontal distance between 2 holes is shown in Page 3 (Refer Dimensions table).

Figure 7



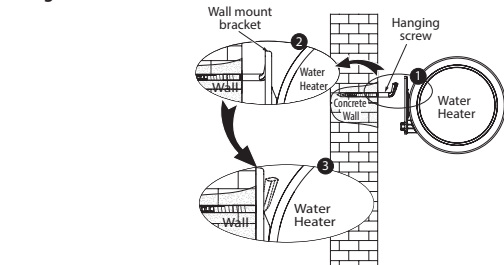
- Insert the Expansion Anchor into the hole (Step 1).
- Insert the Hanging screw over the Expansion Anchor and tighten the Hanging screw by rotating it till it gets fixed steadily (Step 2).

Figure 8



Mount the Water Heater on the Hanging screw through Wall mount bracket. Tug downwards on the Water Heater to ensure that the Water Heater is fixed steadily.

Figure 9



DANGER

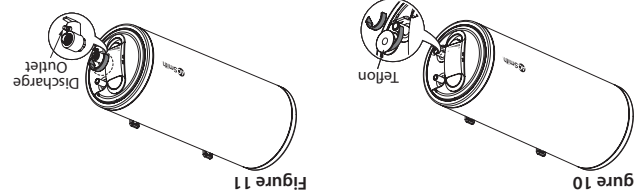


Scalding

Hot water is dangerous, especially for the young children, aged or the disabled. The Water Heater allows you to control the temperature of your hot water. Water temperatures over 52°C can cause severe burns instantly or death from scalds. Do not leave a child or an infirm person in the bath unsupervised.

6

Connecting Multi-function Safety Valve



Note: The Multi-function Safety valve may drip during the usage of the heater. As the water is heated, it expands and tries to flow back through the inlet pipe but is prevented by the presence of the non-return valve (an external valve provided before cold water tap). Hence water may drip from the Multi-function Safety valve. Therefore, Discharge Outlet is provided to discharge water from the Water Heater to avoid dripping, it is recommended to install non-return valve at a distance of at least 40 feet away from the inlet of the Water Heater.

CAUTION

- The Multi-function Safety valve should never be removed or blocked by any means to prevent it from dripping or releasing the excess pressure inside the heater. Failure to do so may result in damage to the Water Heater and injuries to the user. This will also make the warranty null and void.
- Discharge Outlet is provided to release the discharge from the Water Heater in case excessive pressure is developed. The contents of the discharge from the Multi-function Safety valve may be hot and may cause burns to the users and damage nearby objects, therefore it is recommended to take pre-cautions while it is recommended to operate the Discharge lever in the Multi-function Safety valve on a regular basis to ensure that there are no blockages and also to remove any lime deposits that would have been formed inside the Water Heater.
- Ensure that the Water Heater is in power Off condition when the Discharge Lever is being operated. Ensure that the water is filled completely in the Water Heater
- Ensure that the Multi-function Safety valve is not damaged while tightening.

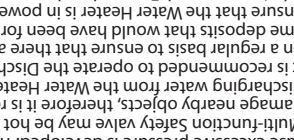


Figure 10

Figure 11

Temperature Setting

Turn the temperature control knob clockwise for the device to commence heating and change the set temperature [The set temperature increases if the temperature control knob is turned clockwise]. Temperature can be adjusted from 25°C to maximum 75°C.

Modes

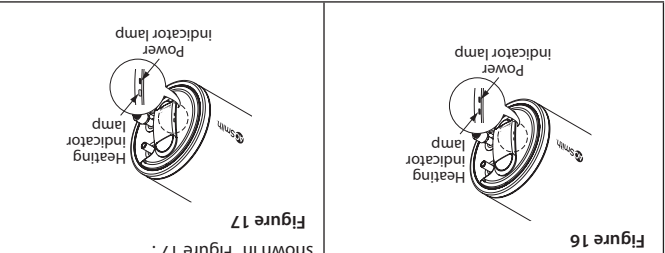
There are two types of modes depending on the actual water temperature inside the inner tank of the Water Heater:

Heating mode

When the actual temperature of the indicator lamp glows as shown in "Figure 16".

Standby mode

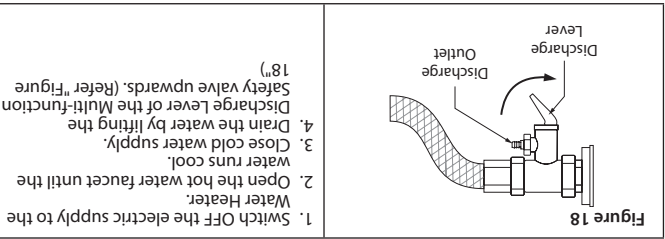
After the Water Heater reaches set temperature, it will enter into the Standby mode due to the thermostat cut-off, the Power indicator lamp glows and Heating indicator lamp switch off as shown in "Figure 17".



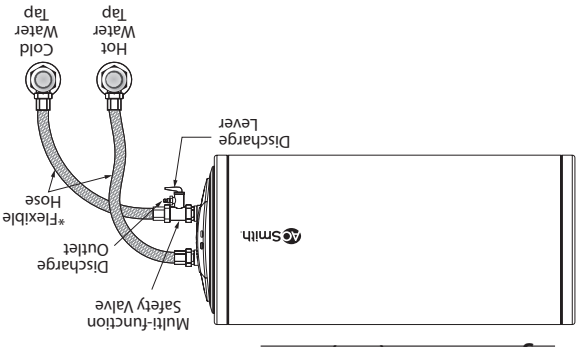
Draining the Water Heater Tank

When the temperature of the water drops by 5°C from the set temperature due to usage of water, the Water Heater again enters into the Heating mode.

Whenever the Water Heater is not used for an extended period or if the product is below freezing temperature, you will need to unplug the unit and drain it.



Connecting to Water Supply



CAUTION

Please turn off the power supply to the Water Heater prior to draining the Water Heater.

Troubleshooting

The Water Heater may not operate as desired if used incorrectly or there is a minor cause, even though the product has no fault. In these cases, check the following issues to solve simple problems without the help from the Customer Care Centre. If the problem does not solve after checking the following issues, call Customer Care Centre.

Problems

Possible Cause(s)

Solution

CAUTION

Please turn off the power supply to the Water Heater prior to draining the Water Heater.

Troubleshooting

The Water Heater may not operate as desired if used incorrectly or there is a minor cause, even though the product has no fault. In these cases, check the following issues to solve simple problems without the help from the Customer Care Centre. If the problem does not solve after checking the following issues, call Customer Care Centre.

Problems

Possible Cause(s)

Solution

CAUTION

Please turn off the power supply to the Water Heater prior to draining the Water Heater.

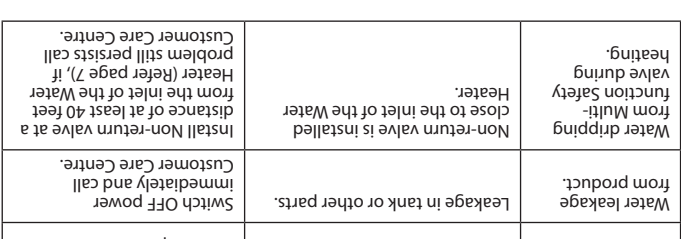
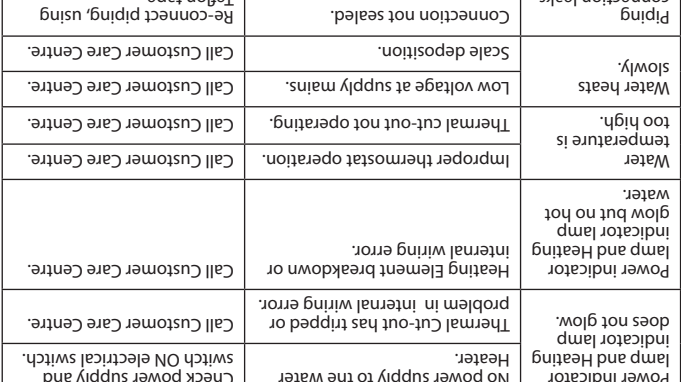
Troubleshooting

The Water Heater may not operate as desired if used incorrectly or there is a minor cause, even though the product has no fault. In these cases, check the following issues to solve simple problems without the help from the Customer Care Centre. If the problem does not solve after checking the following issues, call Customer Care Centre.

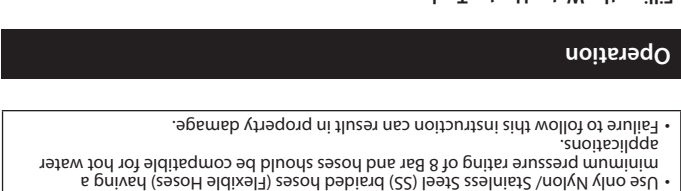
Problems

Possible Cause(s)

Solution



Operation



CAUTION

Make sure a suitable Teflon tape is used for all plumbing connections to prevent leakage.

Use only Nylon/ Stainless Steel (SS) braided hoses (Flexible Hoses) having a minimum pressure rating of 8 Bar and hoses should be compatible for hot water applications.

Failure to follow this instruction can result in property damage.

CAUTION

Make sure a suitable Teflon tape is used for all plumbing connections to prevent leakage.

Use only Nylon/ Stainless Steel (SS) braided hoses (Flexible Hoses) having a minimum pressure rating of 8 Bar and hoses should be compatible for hot water applications.

Failure to follow this instruction can result in property damage.

CAUTION

Make sure a suitable Teflon tape is used for all plumbing connections to prevent leakage.

Use only Nylon/ Stainless Steel (SS) braided hoses (Flexible Hoses) having a minimum pressure rating of 8 Bar and hoses should be compatible for hot water applications.

Failure to follow this instruction can result in property damage.

CAUTION

Make sure a suitable Teflon tape is used for all plumbing connections to prevent leakage.

Use only Nylon/ Stainless Steel (SS) braided hoses (Flexible Hoses) having a minimum pressure rating of 8 Bar and hoses should be compatible for hot water applications.

Failure to follow this instruction can result in property damage.

CAUTION

Make sure a suitable Teflon tape is used for all plumbing connections to prevent leakage.

Use only Nylon/ Stainless Steel (SS) braided hoses (Flexible Hoses) having a minimum pressure rating of 8 Bar and hoses should be compatible for hot water applications.

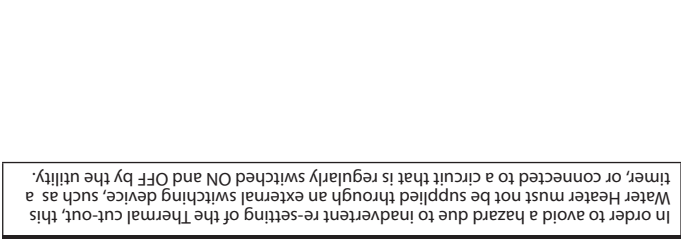
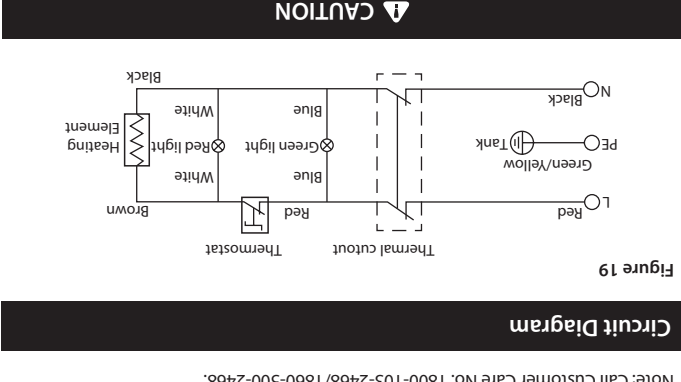
Failure to follow this instruction can result in property damage.

CAUTION

Make sure a suitable Teflon tape is used for all plumbing connections to prevent leakage.

Use only Nylon/ Stainless Steel (SS) braided hoses (Flexible Hoses) having a minimum pressure rating of 8 Bar and hoses should be compatible for hot water applications.

Failure to follow this instruction can result in property damage.



Connecting to Electrical Supply



CAUTION

Make sure a suitable Teflon tape is used for all plumbing connections to prevent leakage.

Use only Nylon/ Stainless Steel (SS) braided hoses (Flexible Hoses) having a minimum pressure rating of 8 Bar and hoses should be compatible for hot water applications.

Failure to follow this instruction can result in property damage.

CAUTION

Make sure a suitable Teflon tape is used for all plumbing connections to prevent leakage.

Use only Nylon/ Stainless Steel (SS) braided hoses (Flexible Hoses) having a minimum pressure rating of 8 Bar and hoses should be compatible for hot water applications.

Failure to follow this instruction can result in property damage.

CAUTION

Make sure a suitable Teflon tape is used for all plumbing connections to prevent leakage.

Use only Nylon/ Stainless Steel (SS) braided hoses (Flexible Hoses) having a minimum pressure rating of 8 Bar and hoses should be compatible for hot water applications.

Failure to follow this instruction can result in property damage.

CAUTION

Make sure a suitable Teflon tape is used for all plumbing connections to prevent leakage.

Use only Nylon/ Stainless Steel (SS) braided hoses (Flexible Hoses) having a minimum pressure rating of 8 Bar and hoses should be compatible for hot water applications.

Failure to follow this instruction can result in property damage.

CAUTION

Make sure a suitable Teflon tape is used for all plumbing connections to prevent leakage.

Use only Nylon/ Stainless Steel (SS) braided hoses (Flexible Hoses) having a minimum pressure rating of 8 Bar and hoses should be compatible for hot water applications.

Failure to follow this instruction can result in property damage.

CAUTION

Make sure a suitable Teflon tape is used for all plumbing connections to prevent leakage.

Use only Nylon/ Stainless Steel (SS) braided hoses (Flexible Hoses) having a minimum pressure rating of 8 Bar and hoses should be compatible for hot water applications.

Failure to follow this instruction can result in property damage.

