

Electromagnetic fields (EMF)

This appliance meets the standards of electromagnetic fields (EMF). If handled properly according to the instructions in this User Manual, the appliance is safe to use.

Environment

To protect the environment, don't discard the appliance with the normal household waste at the end of its life. It is recommended / suggested to dispose off the appliance at the authorized or registered e-waste dismantler (s) / recycler (s) to save the environment. By doing this, you can help to preserve the environment and also some materials can be recycled or recovered in this way.

Warranty

Vega Industries Private Limited hereafter referred to as VEGA offers warranty only on its personal care appliances (VEGA Hair Straightener, Vega Hair Dryer, Vega Hair Curler and Vega Straightening Brush only) against any manufacturing defect for a period of two years from the date of purchase of the appliance. This non-transferrable warranty is only for the first end user on purchase from "VEGA" dealer. "VEGA" will repair or replace the appliance on the terms and conditions mentioned as below:

Terms and conditions

1. Warranty will be valid only when the valid warranty card and original purchase invoice of the appliance are presented together for rendering our services.
2. The warranty card must have the dealer stamp which should be legible along with the date of purchase mentioned clearly in the (DD/MM/YYYY) format. The warranty will not be valid and accepted in case the dealer stamp is not there on the warranty card or if the same is not legible.
3. Customer has to show together the original warranty card and original purchase invoice. In the event of failing to do so, the warranty will not be valid.
4. "VEGA" reserves the right to decline all warranty services, if the above documents are not presented or if the information contained therein is not complete.
5. Warranty will not be valid if the original purchase invoice or the original warranty card is found tampered with.
6. Warranty takes care of only manufacturing defect of the product during warranty period.
7. "VEGA", at its sole discretion will repair or replace the defective parts or replace the appliance if required.
8. Repair of the appliance which is under warranty will be carried out by "VEGA". In such cases "VEGA" carries out repairs or replacement of any part or replacement of the appliance during the said warranty period. The warranty shall thereafter continue only for the remaining period of the warranty.
9. This warranty does not cover any form of damage resulting from dust, foreign object, fire, water, fall, input voltage fluctuation, mishandling, commercial use, dismantling, lightning, flood or any act of natural calamity and use contrary to the operations specified in the User Manual supplied with the appliance.
10. This warranty is valid only in India.
11. "VEGA" will not accept any responsibility for damage if the appliance is dismantled or repaired (including repair of any accessories or attachments) by a person not authorized by "VEGA". In such a case the warranty will not be valid.

12. "VEGA" will not cover any responsibility for damage due to improper care of the appliance or loss arising out of mishandling or one that incurred during transit.
13. This warranty does not cover the cost of transportation of the product from the place of the customer to the service centre of "VEGA".
14. "VEGA" shall not be liable or be deemed to be in default for any delay or failure in performance resulting directly or indirectly from causes beyond its reasonable control.
15. This warranty restriction in no way affects your right under statutory laws.
16. In the event of any difference or dispute arising with reference to the terms and conditions of the warranty or there interpretation, the same shall be referred to a sole arbitrator, who shall be appointed by the Company's Directors. The decision of the sole arbitrator shall be final and binding on both the parties. Such arbitration proceedings shall be held at New Delhi and provision of the Arbitration & Conciliations Act 1996 shall apply to the arbitration proceedings.
17. In case you have any questions, please feel free to contact us on our customer care number at +91-120-4170000 (Monday to Friday 10am-5pm IST) excluding holidays or email us at customercare@vega.co.in



Vega Industries Private Limited
B-43, Sector-80, Phase-II
Noida, U.P. - 201305, India

www.vega.co.in

VEGA

User Manual

Straightening Brush

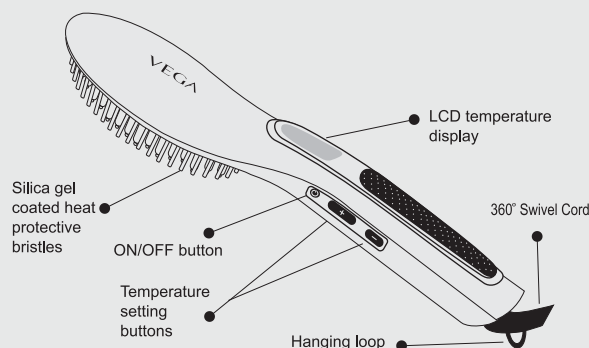
IMPORTANT

- Please read this User Manual carefully before operating this appliance.
- While purchasing the appliance, please ensure that the Warranty Card is enclosed.
- Images used herein are digital depiction of the product and may differ from the physical product inside.

VEGA

Thank you for selecting your Vega straightening brush. The Vega straightening brush collection is an advanced line of appliances, known for performance and reliability. This manual provides not only safety information but also important tips on handling your new Vega straightening brush appliance properly, caring for it and providing helpful styling tips that will give you years of service and beautiful hair.

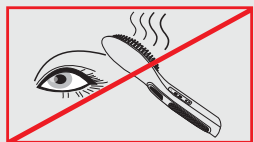
Unit Identification



Important general safety instructions

Please note it is important to read this User Manual for all the safety instructions before using your Vega straightening brush and save it for future reference or for any new user. Do not use the appliance if you do not understand or can not read any instruction, direction, information, caution and warning given in this User Manual. The safety instructions explained in this User Manual help you to use the Vega straightening brush appliance safely and correctly and also to prevent you from injuring yourself or others.

WARNING



WARNING

Not following any of the below mentioned instructions may cause malfunction, fire, burns, explosions, short circuiting, electric shock or any other injury.

- Keep this appliance out of the reach of children and infant.
- This appliance is not intended for use by persons (including children and infant) with reduced physical, sensory or mental capabilities, or lack of experience and knowledge, unless they have been given proper supervision and instruction concerning the use of this appliance by a person responsible for their safety.
- Children should be instructed and supervised to ensure that they do not touch or play with this appliance.
- To protect against electric shock, never allow the appliance, its cord or plug to come into contact with water or any other liquid.
- Do not use this appliance near water or any other liquid.
- Do not use or place this appliance near basins, sinks, bath tubs or at any place from where this appliance may fall in any vessel containing water or any other liquid.
- Never reach for any electrical appliance that has fallen into water or any other liquid. Immediately switch off the power supply at the main breaker and then unplug.
- Do not attempt to re-use the appliance if it has been submerged in water or any other liquid.
- Do not handle this appliance with wet hands. Ensure that your hands are completely dry before operating or adjusting any switch on the appliance or touching the plug.
- Before you connect this appliance, ensure that the voltage indicated on the appliance corresponds to the local power voltage.
- If the plug does not fit fully in the electric socket, reverse the plug. If it still does not fit, contact a qualified electrician.
- Do not use this appliance near flammable substances such as benzene, aerosol cans, spray products or any other toiletries.
- To avoid any kind of damage to property, never leave this appliance unattended while it is turned on.
- Always unplug the appliance after use at the electrical socket. This is important as even if the appliance is switched off, the electrical current still reaches the device.
- Do not cover the appliance with any article, such as a towel or clothing while the appliance is hot. Keep it on a heat resistant surface.
- Use this appliance only for its intended use as described in this manual.
- Do not use any attachments or accessories or parts of any other manufacturer or any equipment that VEGA does not recommends.
- Do not use an extension cord to operate this appliance.
- Do not place the appliance on plastic or any material/surface sensitive to heat while it is operating or hot.
- Keep the heated sections away from your skin to avoid burns.
- Do not use this appliance with any voltage converter.
- Do not touch the heated sections of the appliance to avoid burns.
- Always inspect the appliance before use, pay particular attention to the condition of the cord and plug.
- Do not use the appliance with a damaged cord or plug.
- Do not use if the appliance has been dropped, left outdoors, submerged in water or if it is not working according to instructions.
- Do not use the appliance if it is not working properly or smells of burning. Stop using the appliance immediately.
- Do not wind/wrap the main wire cord around the appliance.
- Do not touch the bristles of the brush during and after use as these would be hot.
- **Use the appliance only on dry hair and not on wet hair.**

- Do not use the appliance on artificial hair.
- Always keep a distance between the appliance and your eyes to avoid burns.
- Avoid using thinner, benzene, or any other solvent to clean the appliance.
- For additional protection, we advise you to install a residual current device (RCD) in the electrical circuit that supplies electrical power to the bathroom. This RCD must have a rated residual operating current not higher than 30mA. Ask a qualified electrician for advice.
- We do not accept any responsibility for damage to the appliance, person/s, or other item/s caused by misuse, abuse or non compliance with the instructions mentioned in this User Manual.

How to use Straightening brush

- **Dry your hair completely.**
- Insert the plug of the straightening brush into the electric socket and turn it on.
- To turn on the straightening brush, gently press the ON/OFF button for few seconds.
- Set the temperature as per your hair type with + and – button.
- Allow straightening brush to heat up for approximately 60-120 seconds.
- Separate your hair into sections.
- Brush your hair from roots to tips along the length in a slow pulling motion.
- Make sure your hair gets deep into the inner area of the brush.
- After a section of hair is straightened move to the next section. Repeat the process to get silky straight hair.
- After use, turn the straightening brush OFF. To turn OFF gently press the ON/OFF button for few seconds, unplug the cord and allow the appliance to cool down completely before storing.

Styling tips

- **Use only on dry hair.**
- Choose the right temperature as per your hair type.

Temperature	Hair types
180°-190°C	Recommended for thin hair
200°- 210°C	Recommended for normal hair
220°- 230°C	Recommended for thick or wavy hair

Maintenance and Care

1. Always clean the appliance after it has cooled down and the plug is removed from the electric socket.
2. Remove hair strands that are in the bristles before you clean the appliance.
3. To clean the appliance gently use a soft and clean damp cloth.
4. Clean the small spaces in between the bristles gently.
5. The tips of the bristles are fragile so clean them very gently.
6. Do not use any kind of hard material such as toothbrush or any other metal material to clean as this can damage the bristles.
7. Never use any chemical or alcohol, thinner, benzene or remover to clean the appliance.
8. Never immerse the appliance in water or any other liquid to clean.
9. Do not wind/wrap the main wire cord around the appliance.
10. Do not use the appliance immediately after cleaning.