



# Graphic Pen Tablet

## Star G640S Manual

Windows 10,8,7 and Mac 10.10 or above



## Safety Precautions

This manual uses the following symbols to ensure that the XP-PEN Tablet is used correctly and safely. Be sure to read and observe the Safety Precautions.



**Do not use this product in a control system area that requires a high degree of safety and reliability.**

In such a system, this product could negatively affect other electronic devices and could malfunction due to the effect of those devices.



**Turn the power off in areas where use of electronic devices is prohibited.**

Turn the power off your tablet when onboard an aircraft or in any other location where use of electronic devices is prohibited, otherwise it may negatively affect other electronic devices in the area. Unplug the USB connector from this product and turn the power off.



**Keep the product away from infants and young children.**

Accessories to this gadget may present a choking hazard to small children. Keep all accessories away from infants and young children.



## CAUTION

**Do not place this product on unstable surfaces.**

Avoid placing this product on unstable, tilted surfaces or any locations exposed to excessive vibrations. This may cause the tablet to fall or impact surfaces which can result in damage and/or malfunction to the tablet.

**Do not place heavy objects on top of this product.**

Do not place heavy objects on the product. Do not step on, or place your body weight on this product as this may cause damage.



**Avoid extreme high or low-temperature exposure to the XP-Pen tablet.**

Do not store this product in areas that drop below 5°C or above 40°C. Avoid locations with excessive temperature fluctuations. This may result in damage to the product and its components.



**Do not disassemble**

Do not disassemble or modify this product. Doing so may expose you to heat, fire, electric shock and injury. Disassembling the product will void your warranty.



**Do not use alcohol for cleaning**

Never use alcohol, thinner, benzene or other mineral solvents that may discolor and cause deterioration to the product.



**Do not expose to water**

Be cautious of water and all liquids that may be near the tablet. Exposure to water or liquid could damage the product.



## CAUTION



**Avoid placing metallic objects and especially magnetic objects on the tablet.**

Placing metallic and/or magnetic objects on this product during operation may cause malfunction or permanent damage.



**Do not strike the pen against hard objects.**

Striking the pen against hard objects can cause damage to the pen.



**Avoid gripping the pen too tightly, and DO NOT use excessive weight/pressure on the Express Key button and pen.**

The stylus pen is a high-precision instrument. Avoid pressing too tightly on the Express Key button, and keep any objects from covering the pen to avoid potential damage. Keep the pen away from areas of high dust, contaminants, or any particulate matter that can effect or damage the pen.

## Limitation of Liability

1. XP-Pen shall in no event be liable for damages resulting from fires or earthquakes, including those caused by third parties and those arising from user misuse, abuse or neglect.
2. XP-Pen shall in no event be liable for incidental damages- including but not limited to loss of business income, interruption of business activities, corruption or loss of data – that arise from use or failure to use this product correctly.

3. XP- Pen shall in no event be liable for damage resulting from uses not documented in this manual.
4. XP- Pen shall in no event be liable for damages or malfunction arising from the connection to other devices or use of third party software.

# Contents

## I. Product Overview

Overview

Working area

## II. Stylus

Overview

Pen tip replacement

## III. Driver Installation

Windows

Mac

## IV. Driver Settings UI

Windows

Mac

## V. Driver Uninstall

Windows

Mac

## VI. FAQ

# { I. Product Overview }

## Overview

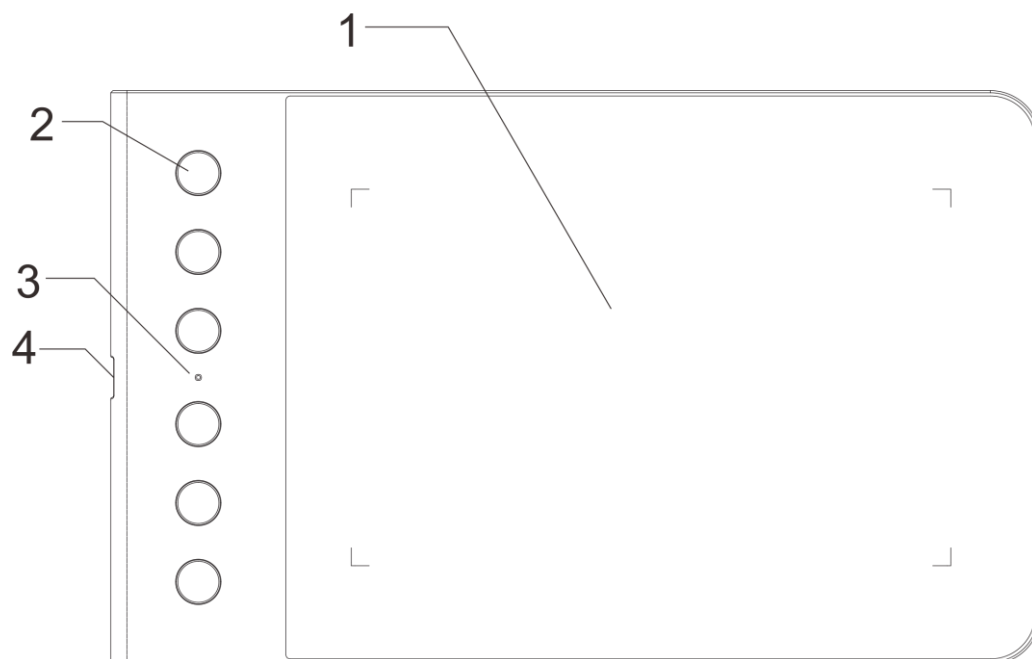


Image 1-1: Overview

- (1). Active area
- (2). Shortcut keys
- (3). Status indicator light
  - a. Blinking: Stylus is in range, but not touching the working area.
  - b. Solid: Stylus is touching the working area.
  - c. No light: Stylus is out of detection range.
- (4). USB port

## Active area

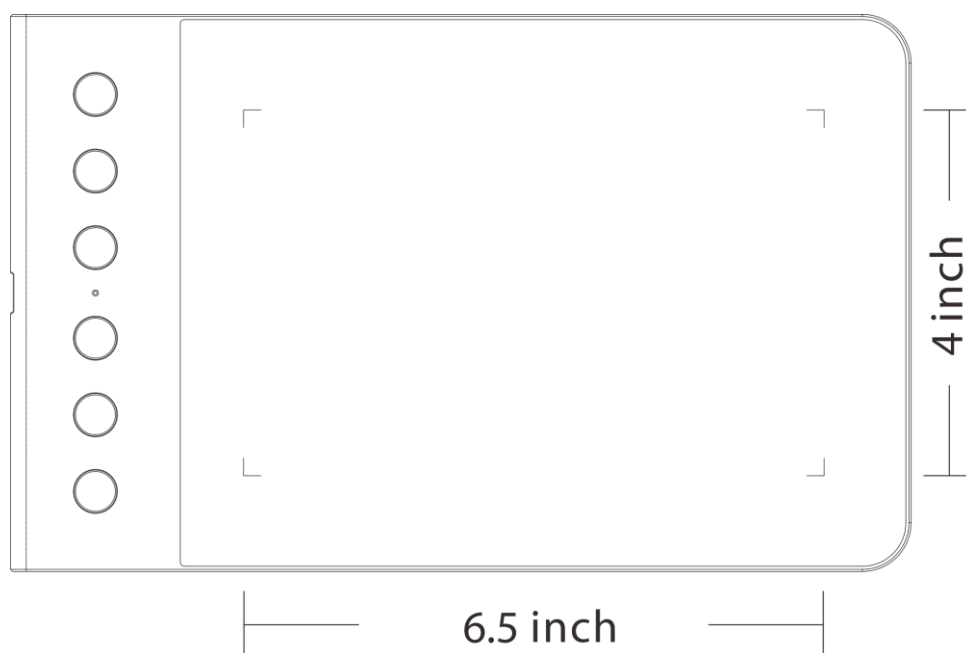


Image 1-2: Active area

## { II. Stylus }

### Overview

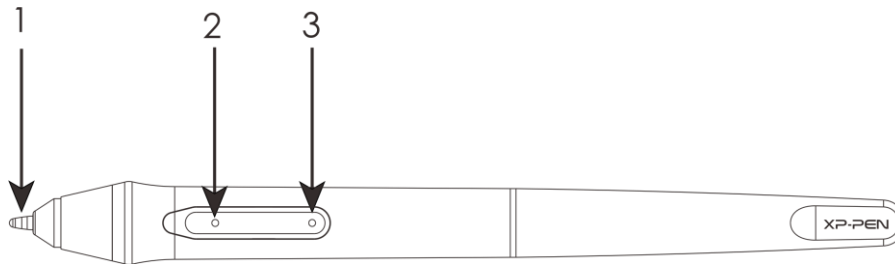


Image 2-1: Stylus

- (1). Pen tip
- (2). Barrel button 2
- (3). Barrel button 1

#### NOTES:

- a. Barrel button functions can be customized in the tablet's driver settings.
- b. Stylus does not use a battery or require charging.

### Pen tip replacement

- (1). Pull out the pen tip from the stylus pen by using the included Pen Clip
- (2). Install the new pen tip in the same manner as you pulled out the old tip
- (3). Push the pen tip into the stylus pen



Image 2-2: Pen tip replacement

## { III. Driver Installation }


#### Supported operating systems:

Windows 10, 8 or 7  
Mac OS X 10.10 or above

#### NOTES :

- (1). **Disable any antivirus or firewall software and close any non-essential background software before beginning the installation. Some software, such as OneDrive and Dropbox, may monopolize important files and prevent a successful installation.** On Windows computers, check the system tray on the bottom-right of the screen and close any software unrelated to your computer hardware.
- (2). **Uninstall any existing tablet software before attempting to install the G640S driver. Other tablet drivers may conflict with the G640S driver or prevent installation entirely.**
- (3). **You can download the latest driver version from the XP-Pen website ([www.xp-pen.com](http://www.xp-pen.com)). If you choose to download the driver from the website, be sure to extract the ".zip" file contents before running ".exe" or ".pkg."**

### Windows

- (1). Connect the G640S to your computer using the included USB cable.
- (2). Please download the G640S latest driver from the support section of our website, [www.xp-pen.com](http://www.xp-pen.com)
- (2). Extract the ".zip" file contents before running the ".exe" file.
- (3). After a successful installation, the driver's icon (  ) will appear in your system tray and on your desktop. If the icon is not

present, uninstall the driver, reboot, and repeat step 2.

## Mac

- (1). Connect the G640S to your computer using the included USB cable.
- (2). Please download the G640S latest driver from the support section of our website, [www.xp-pen.com](http://www.xp-pen.com)
- (3). Extract the ".zip" file contents before running ".pkg".



Image 3-1: Mac driver

- (4). If you run into the error message below, please complete the following steps.

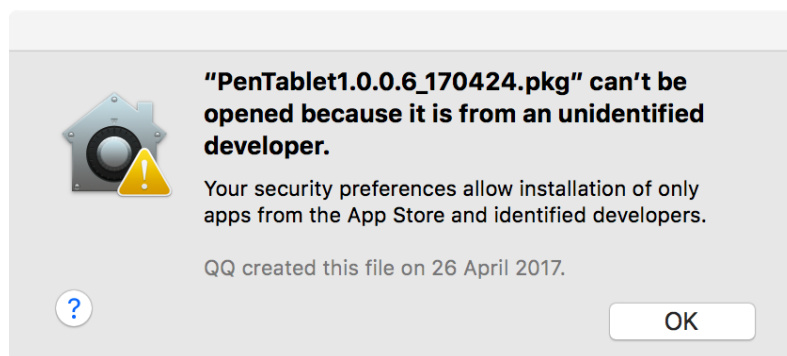


Image 3-2: Unidentified developer

- a. Open "System Preferences," then "Security & Privacy".

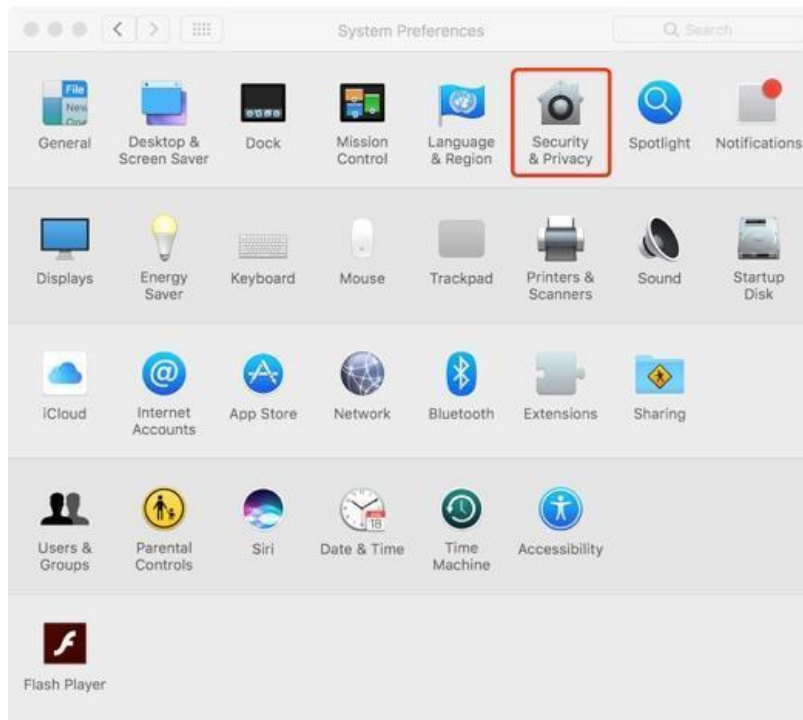


Image 3-3: Security & Privacy

- b. Click "Open Anyway" button.

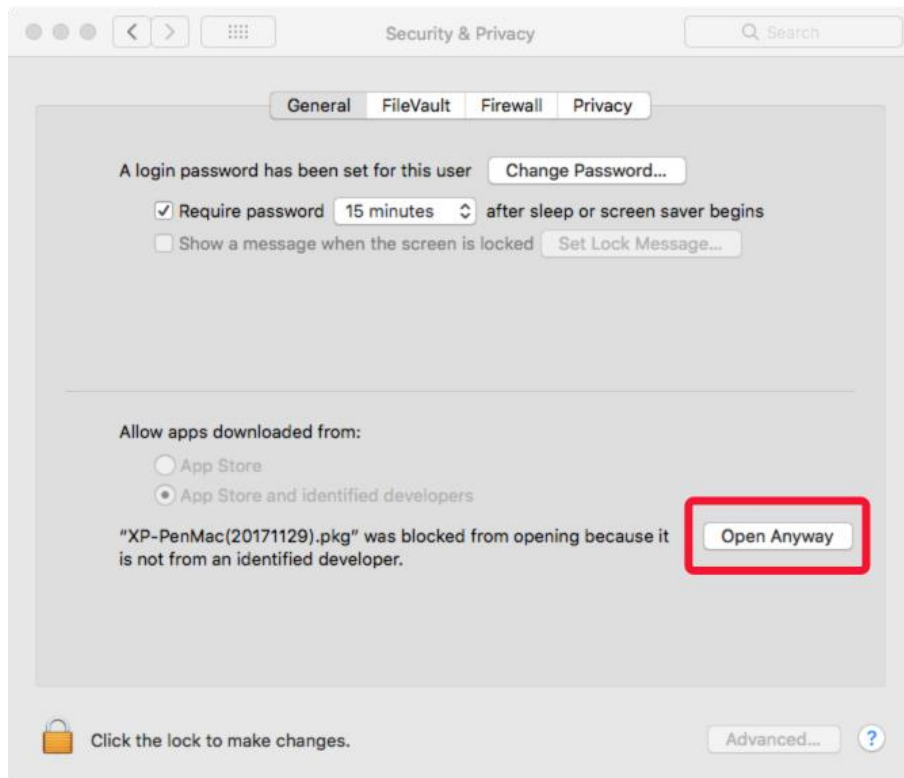


Image 3-4: Open Anyway

c. Input your username and password, then click "Unlock."

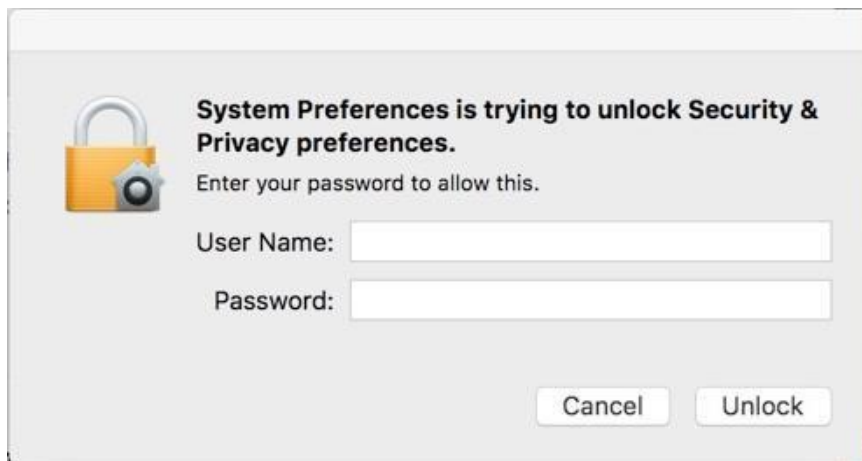


Image 3-5: Password

## { IV. Driver Settings UI }

### Notes:

- (a). The G640S' shortcut keys are designed to work with US English keyboards. Keys may not function correctly with the other keyboard languages.
- (b). By default, the G640S express keys are mapped to standard Photoshop keyboard shortcuts. Keys can be customized to function efficiently in other software.

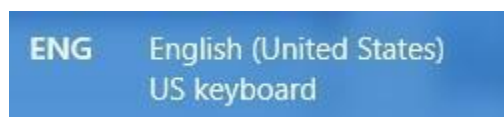


Image 4-1. Keyboard

## Windows

The G640S' driver settings can be opened in two ways:

Double-click the driver's icon (  ) in system tray or your desktop.

## Driver UI

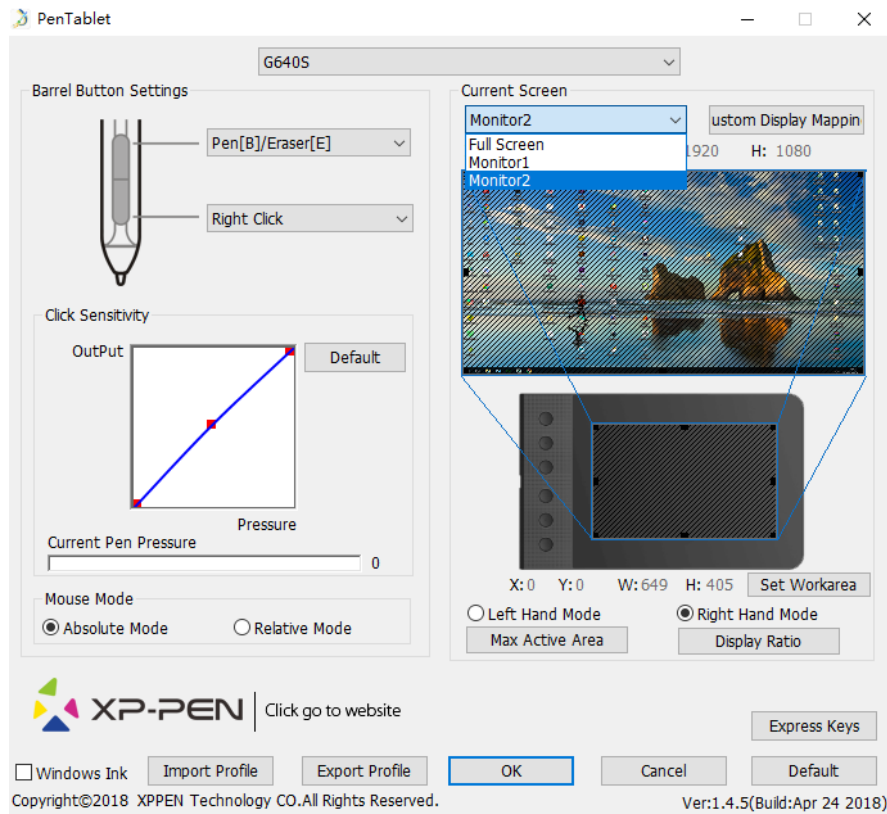


Image 4-2: UI

### 1.1. Pen Function Settings

You may customize the functions of your tablet pen's barrel buttons here. Use the "Function Key" option to program custom keystrokes.

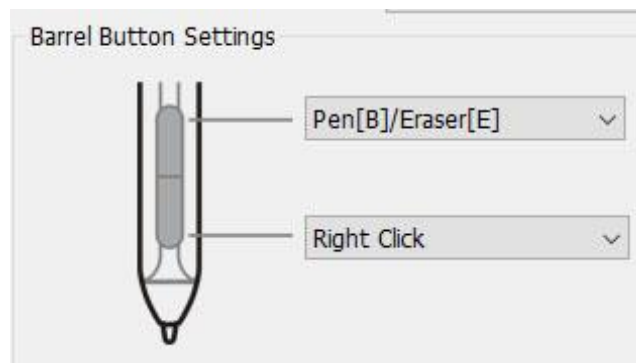


Image 4-3: Pen Functions Setting

#### Note:

##### Pen/Eraser Toggle

**With the stylus in range working area, press the assigned barrel button to toggle between pen and eraser modes in compatible drawing software. The current mode will briefly be displayed on your monitor.**

### 1.2. Click Sensitivity & Current Pen Pressure

You can adjust pen pressure to "Output" or "Press" sensitivity on here.

Current Pen Pressure shows the current pressure level being exerted on your tablet and can be used to test pen pressure.



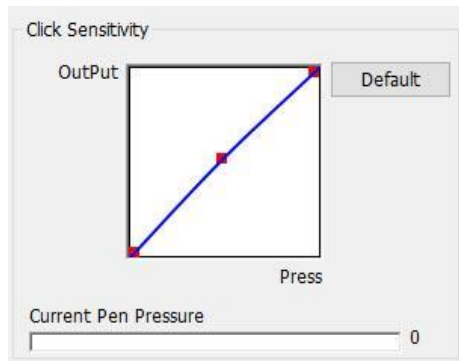


Image 4-4: Click Sensitivity & Current Pen Pressure

### 1.3. Current Screen

The G640S may be configured for use with single or dual monitors. If only one monitor is selected, your tablet input will be limited to that particular monitor. The dimensions of your tablet's on-screen work area can be changed here.

Set Work area:

When you click the "Set Work area" button, you can use the stylus pen to customize the G640S work area. Please click the top-left and bottom-right to customize.

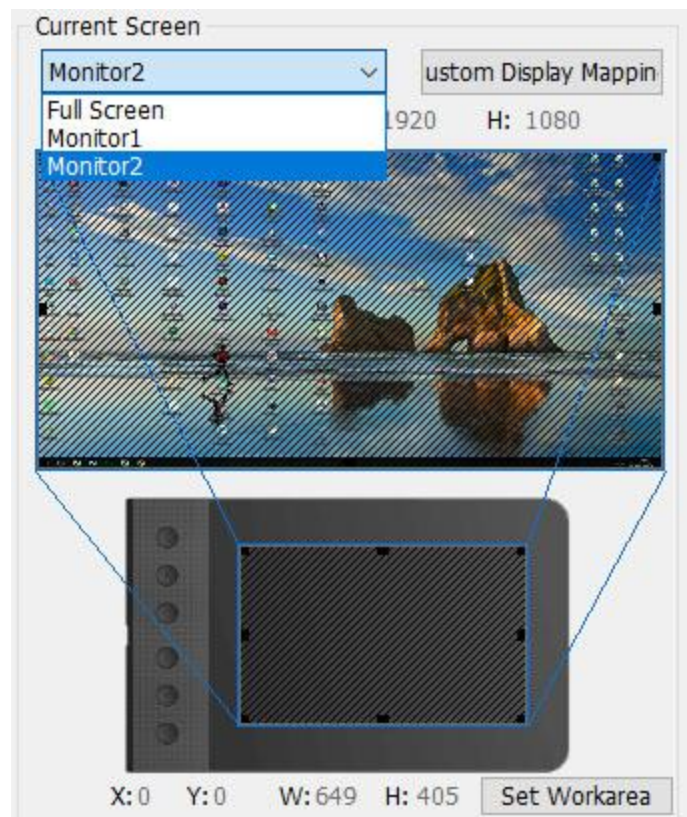


Image 4-5: Update Screen & Full Screen

### 1.4. Right/Left Hand Mode & Max Active Area/Display Ratio

The G604S is set up for right-handed use by default. When switching to left-handed mode, be sure to rotate the actual physical tablet 180 degrees to place its shortcut keys on its opposite side.

Max Active Area & Display Ratio

You can set your G604S work area to the max or adjusts the tablet's on-screen working area to match your monitor's resolution.



Image 4-6: Mouse Mode

### 1.5. Mouse Mode

Absolute (Pen) Mode: Standard tablet mode; Each point of the tablet's work area corresponds to an absolute point on your computer display.

Relative (Mouse) Mode: Mouse mode; The tablet's work area does not correspond to absolute points on your computer display and your pen works as a standard mouse.



Image 4-7: Mouse Mode

## 1.6. Import & Export Profiles

You can use the Import & Export Profile function to save/load your barrel buttons and shortcut keys setting.

### Note:

**When you complete setting up your barrel buttons and shortcut keys, click the OK button to save and exit the tablet settings menu.**

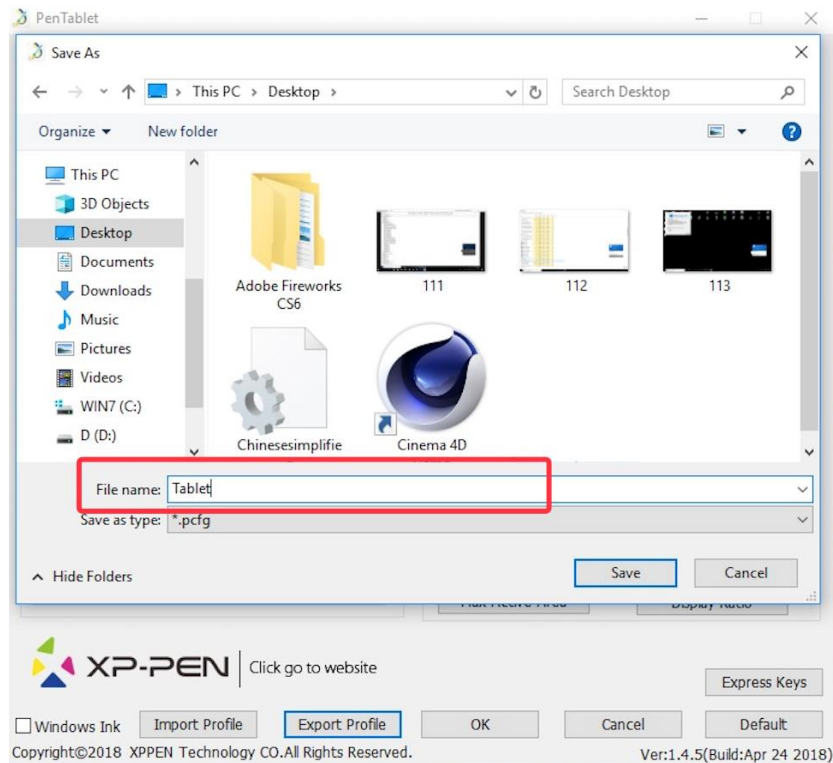
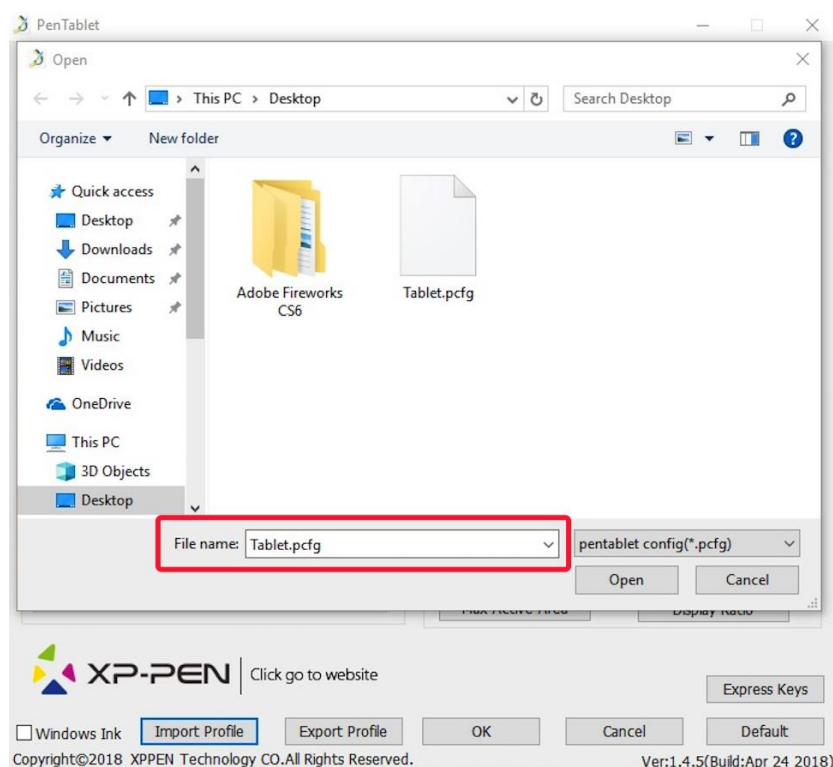


Image 4-8: Export Profile



## 1.7 Windows Ink

This capability can be toggled on and off here. Enabling this will allow support for Windows Ink and applications that run using Windows Ink.



Image 4-10: Windows Ink

## 1.8. Express Keys Setting

In this tab, you may edit the functions of the G640's shortcut keys. Use the "Definition" option to program custom keystrokes.

Disable express keys: When you enable it, all of the express keys function will be disabled.

Hide hints: When you enable it and press any express key, the message will not popup on the bottom of your screen.

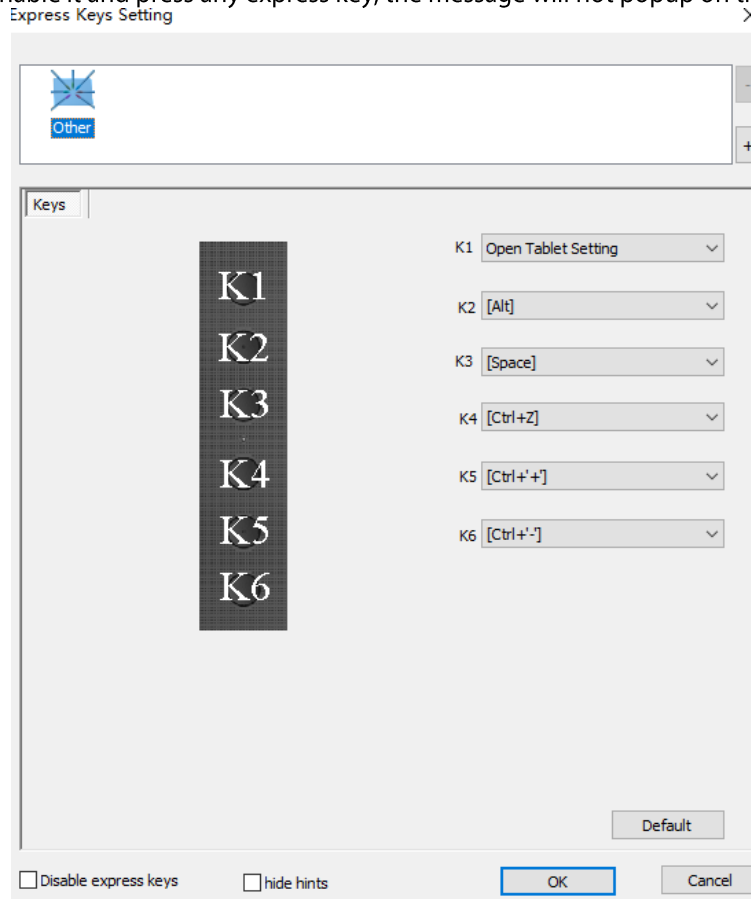


Image 4-11: Keys

### Note:

**You can set each shortcut key for different software.**

- Click the "+" button to go to Select Program tab.

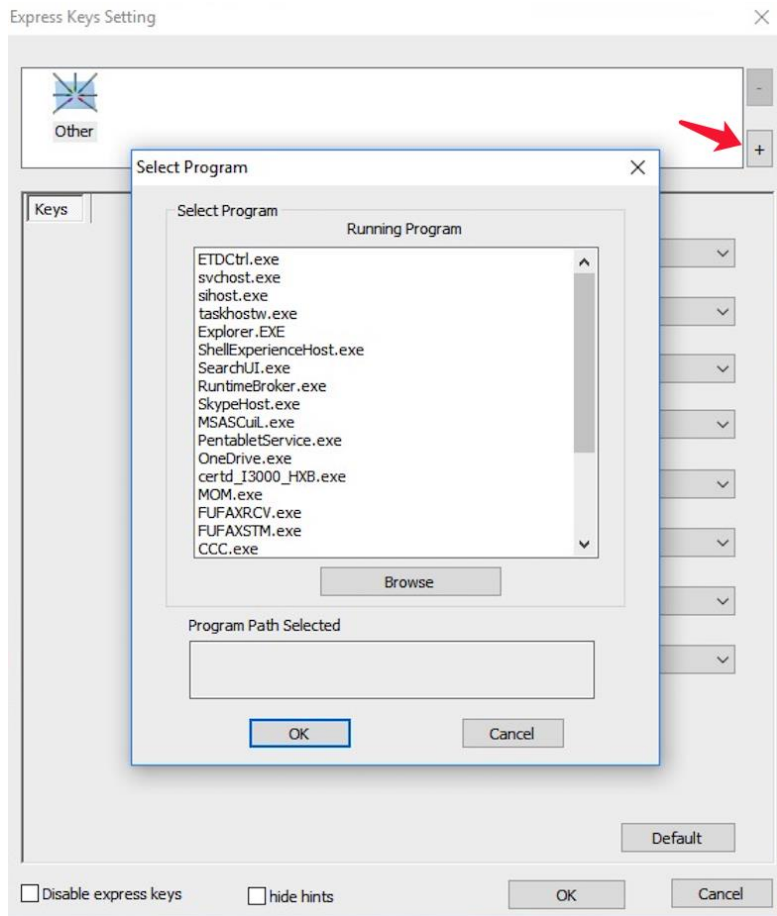


Image 4-12: Select Program

- b. You can choose Default or use Browse to select your choice of software.

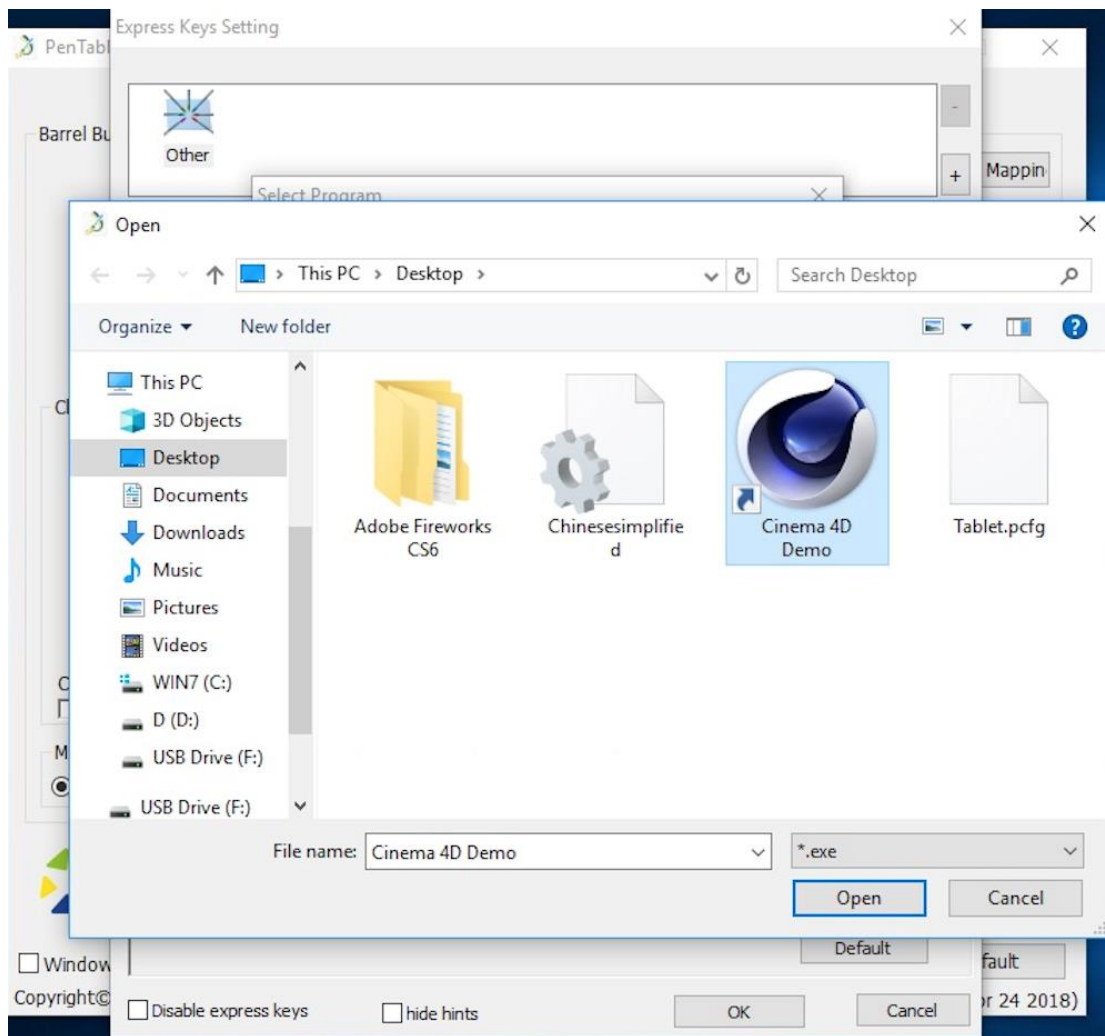


Image 4-13: Select Program

- c. Return to the shortcut key settings tab, click the software icon then customize the shortcut keys. When you are finished, click the OK button and exit the tablet settings menu.

## 1.9. XP-Pen Logo


If a driver update is available, you will see a blue arrow here (  ). Click the arrow to update your driver. Click our logo to visit our website.



Image 4-14: XP-Pen logo

## Mac

To open the G640S' driver settings, open Finder > Applications > PenTabletSetting.

### Driver UI

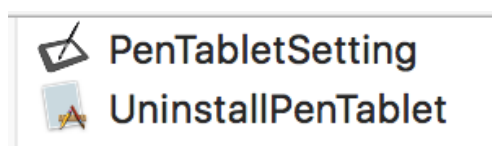


Image 4-15: Tablet Setting

### 1.1. Pen

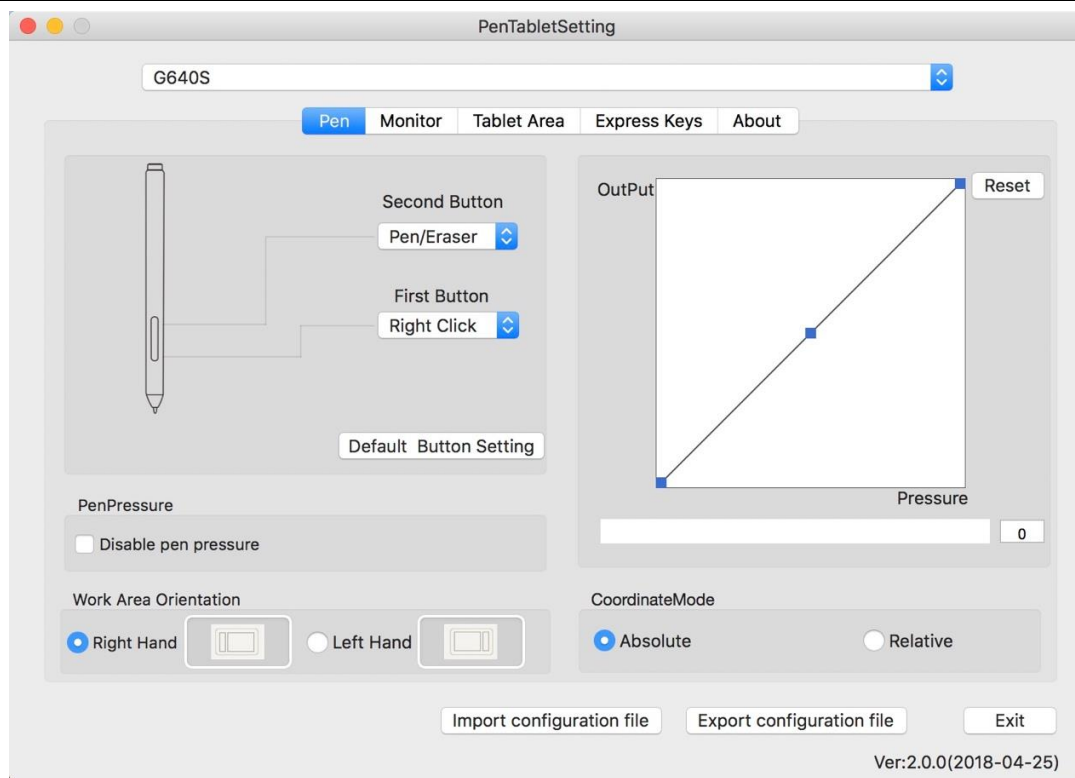


Image 4-12: Mac UI

In this tab, you may customize the functions of your stylus's barrel button, adjust pressure sensitivity, and test your pen pressure.

Click "Default Button Setting" to revert to manufacturer settings.

#### Note:

##### Pen/Eraser Toggle

**With the stylus in range working area, press the assigned barrel button to toggle between pen and eraser modes in compatible drawing software. The current mode will briefly be displayed on your monitor.**

##### 1.2. Pen Pressure:

When the "Disable pen pressure" function is enabled, you can disable the pen pressure function.

##### 1.3. Out Put:

You can adjust pen pressure to "Output" or "Press" sensitivity on here.

It shows the current pressure level being exerted on your tablet and can be used to test pen pressure.

##### 1.4. Work Area Orientation:

The G640S can also be configured for right or left-handed use in this tab. When switching to left-handed mode, be sure to rotate the actual physical tablet 180 degrees to place its shortcut keys on its opposite side.

##### 1.5. Coordinate Mode:

Absolute (Pen) Mode: Standard tablet mode; Each point of the tablet's work area corresponds to an absolute point on your computer display.

Relative (Mouse) Mode: Mouse mode; The tablet's work area does not correspond to absolute points on your computer display and works as a standard mouse.

##### 1.6. Import & Export Profiles

You can use the Import & Export Profile function to save/load your barrel buttons and shortcut keys setting.

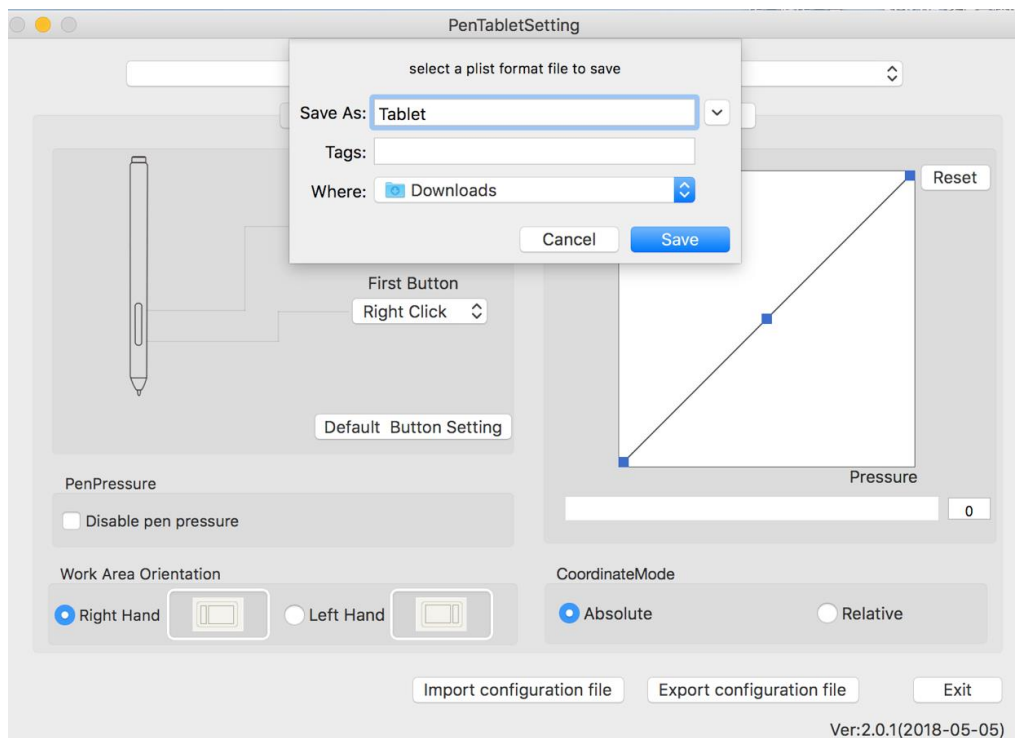


Image 4-17: Export configuration file

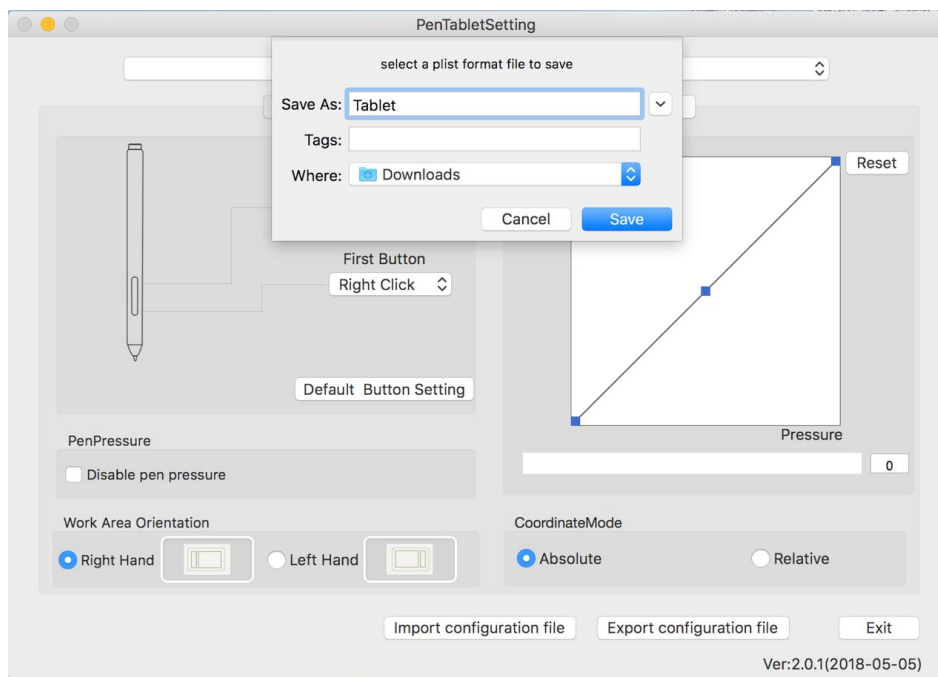


Image 4-18: Import configuration file

## 1.7. Monitor

The "Monitor" tab allows you to configure your tablet for use with single or dual monitors. The tablet can also be configured to use only a portion of your display.



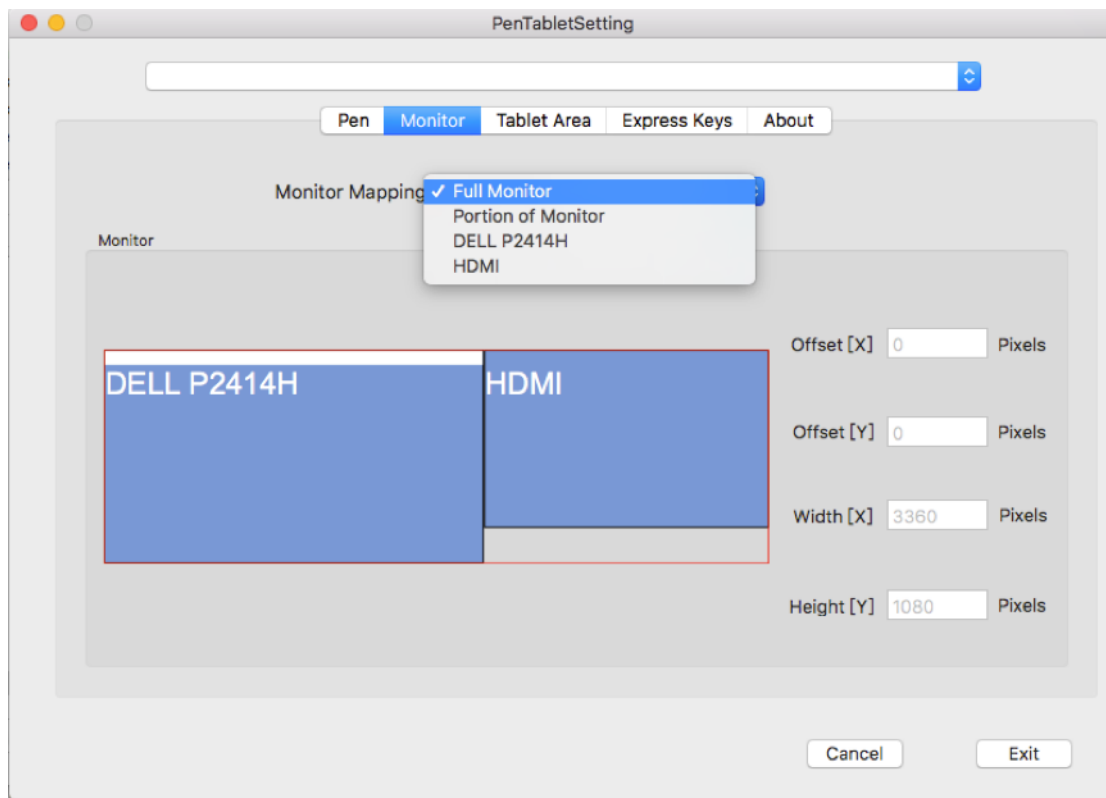


Image 4-19: Full Monitor

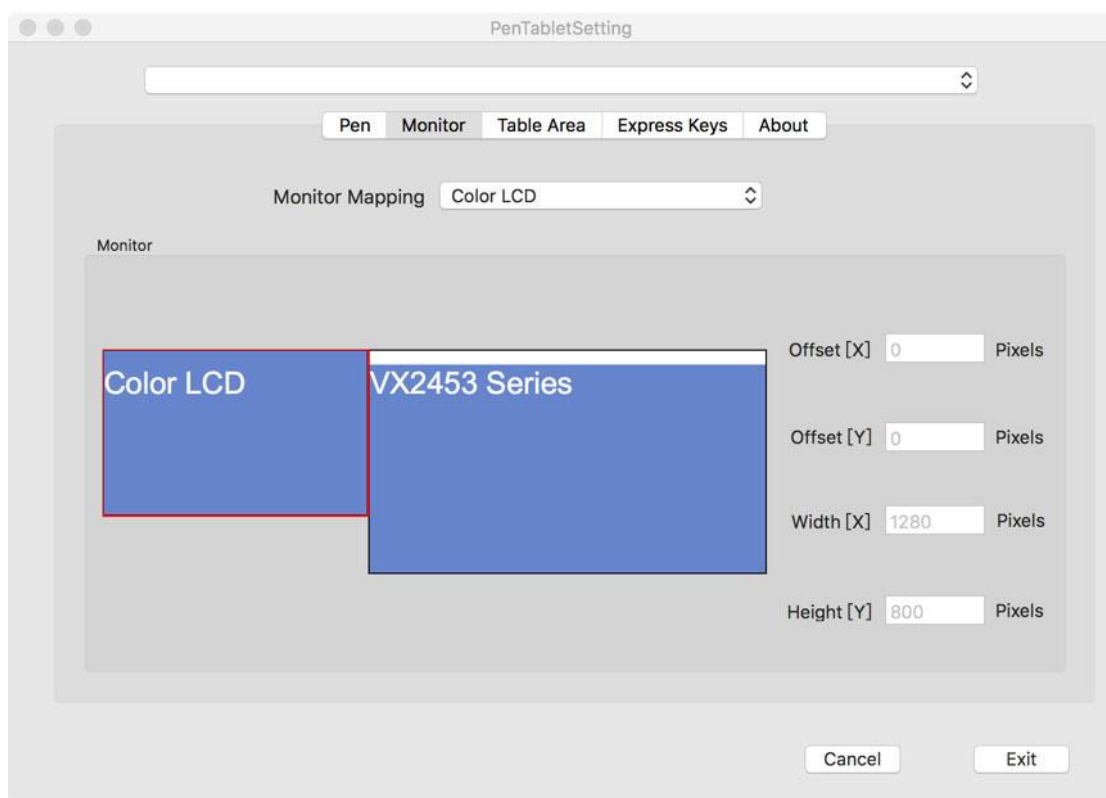


Image 4-20: Single Monitor



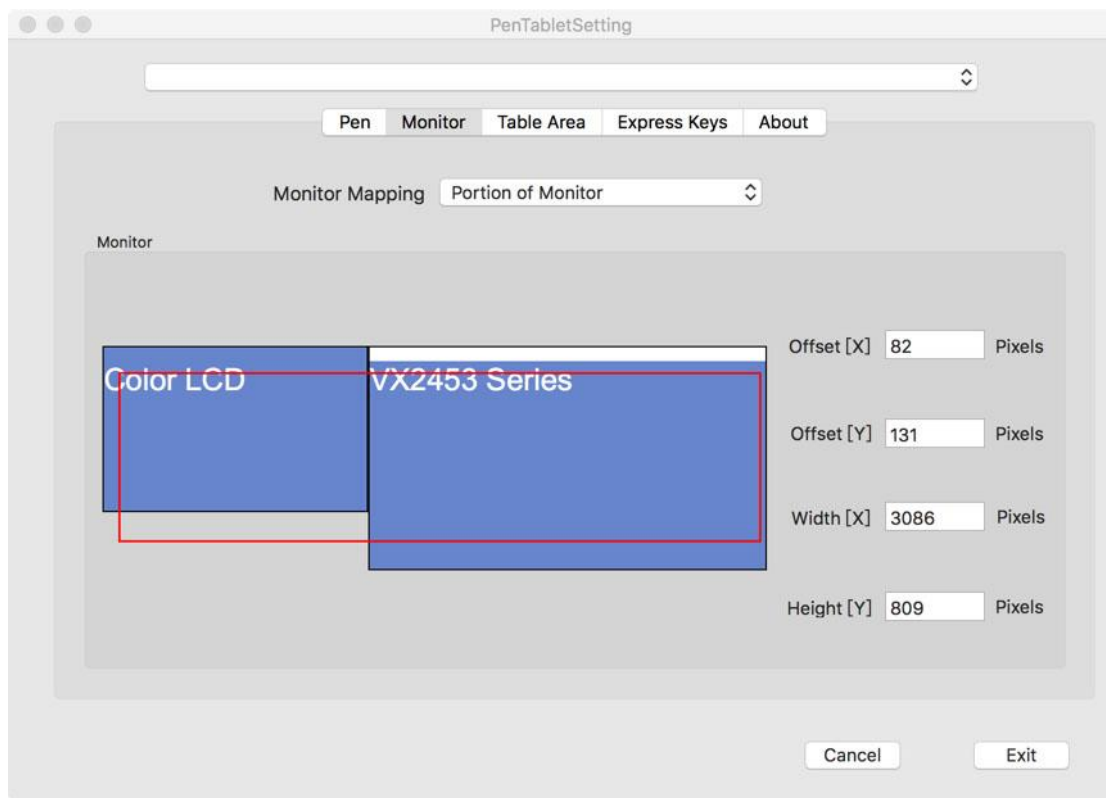


Image 4-21: Single Monitor (Portion)

### 1.8. Tablet Area

You may adjust your tablet's on-screen working area in this tab.

"Full Area" automatically selects the largest possible working area.

"Screen Ratio" adjusts the tablet's on-screen working area to match your monitor's resolution.

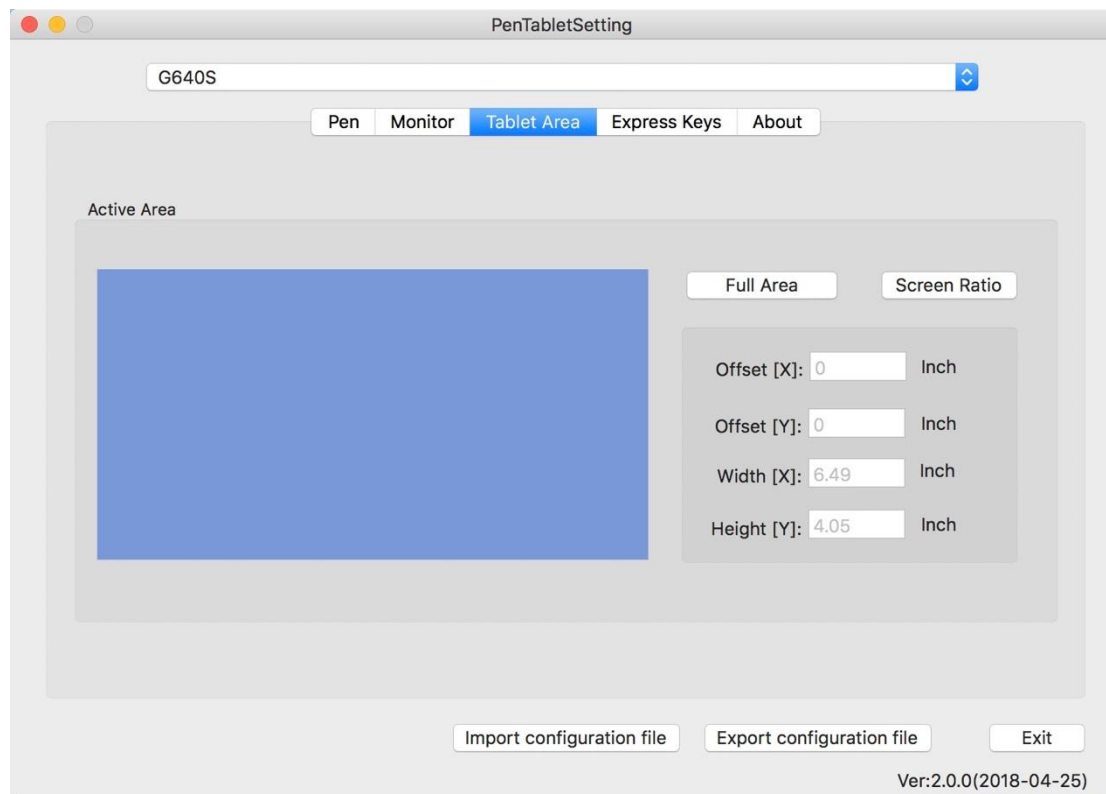


Image 4-22: Full Area

### 1.9. Express Keys

In the Express Keys tab, you may choose your preferred functions for the G640S' shortcut keys. Use the "Reset Customer Defined" option to program custom keystrokes.

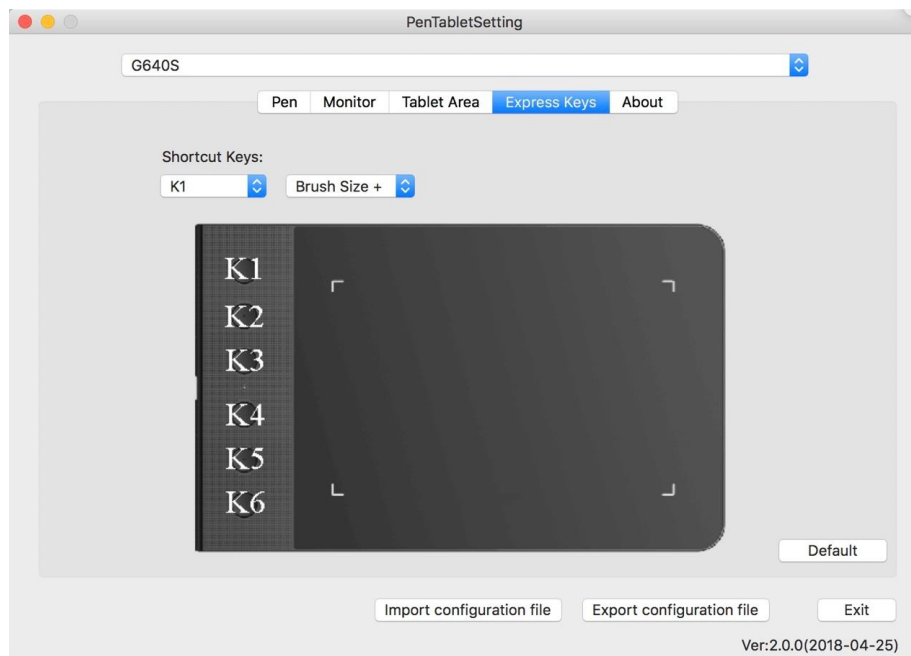


Image 4-23: Express Keys

### 1.10. About

This tab displays the current version of your driver software.

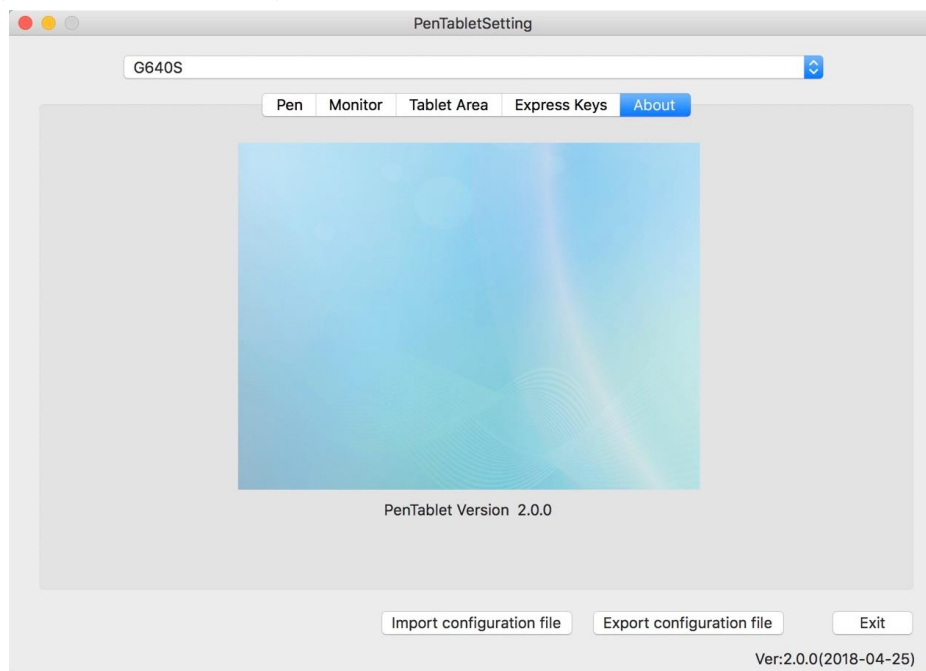


Image 4-24: About

## { V. Driver Uninstall }

### Windows

In the Start menu, open [Settings] → [Apps & features]. Find “Pentablet” and click “Uninstall.” Follow the on-screen instructions.

### Mac

Open [Finder] → [Application] → [Pen Tablet], then click “Uninstall Pen Tablet” and follow the on-screen instructions.

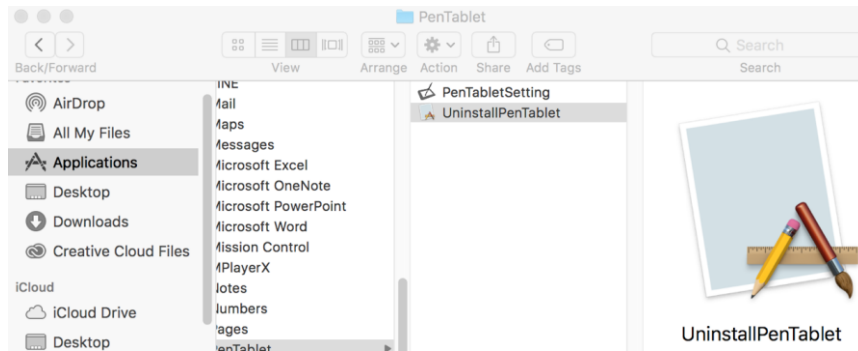


Image 5-1: Mac uninstall

**NOTE:**

**When attempting to reinstall the G640S driver, be sure to reboot your computer after the uninstall is complete.**


## { VI. FAQ }

### 1. I can't use the stylus to control the cursor.

a. Does the tablet's status indicator light come on when the stylus is in contact with the working area?

Yes: Uninstall the G640S driver. If its uninstaller will not run, run the driver's installer again, then allow it to uninstall the driver. Reboot, then connect the tablet to your computer and test your stylus. If the cursor responds to your pen input, the tablet's hardware is functional. Reinstall the G640S driver according to these steps (Windows):  
Download the tablet's latest driver from [www.xp-pen.com](http://www.xp-pen.com), then extract the ".zip" contents onto the desktop and installation.

### 2. How do I know that the G640S driver installed successfully?

a. After installing the driver, the G640S' driver icon  should be visible in your system tray on the bottom-right of your screen (Windows OS). Pen input will control the cursor and pressure sensitivity will be functional in the driver UI's "Pressure Test" tab.

### 3. How do I determine if a problem is software or hardware related?

- Connect and install the G640S on a different computer. If the tablet functions properly on the new computer, you are experiencing a software issue—confirm that ALL tablet drivers (including the G640S) are uninstalled and removed from your computer, then reinstall the G640S.
- The G640S' indicator lights will help you determine if an issue is hardware-related. When functioning properly, the blue status indicator light will light up when the stylus pen is in range of or touching the tablet's working area.

**If you have any questions, please contact us at:**

**Skype: XP-Pen**

**Web: [www.xp-pen.com](http://www.xp-pen.com)**

**Email: [service@xp-pen.com](mailto:service@xp-pen.com)**