

Wireless Stereo Headset  
WI-C200 / WI-C310



Use this manual if you encounter any problems, or have any questions.

In this manual, WI-C310 is used for illustration purposes unless when otherwise indicated.  
The picture above is of the WI-C310.

## Getting started

[What you can do with the Bluetooth function](#)

[About voice guidance](#)

### Supplied accessories

[Checking the package contents](#)

[Replacing the earbuds](#)

[When you have finished using the headset](#)

### Parts and controls

[Location and function of parts](#)

[About the indicator](#)

### Power/Charging

- [Charging the headset](#)
- [Available operating time](#)
- [Checking the remaining battery charge](#)
- [Turning on the headset](#)
- [Turning off the headset](#)

## Making connections

### [How to make a wireless connection to Bluetooth devices](#)

#### Android smartphone

- [Pairing and connecting with an Android smartphone](#)
- [Connecting to a paired Android smartphone](#)

#### iPhone (iOS devices)

- [Pairing and connecting with an iPhone](#)
- [Connecting to a paired iPhone](#)

#### Computers

- [Pairing and connecting with a computer \(Windows 10\)](#)
- [Pairing and connecting with a computer \(Windows 8.1\)](#)
- [Pairing and connecting with a computer \(Windows 7\)](#)
- [Pairing and connecting with a computer \(Mac\)](#)
- [Connecting to a paired computer \(Windows 10\)](#)
- [Connecting to a paired computer \(Windows 8.1\)](#)
- [Connecting to a paired computer \(Windows 7\)](#)
- [Connecting to a paired computer \(Mac\)](#)

#### Other Bluetooth devices

- [Pairing and connecting with other Bluetooth devices](#)
- [Connecting to a paired Bluetooth device](#)

#### Multipoint connection

- [Connecting the headset to both a music player and a smartphone / mobile phone \(multipoint connection\)](#)
- [Connecting the headset to 2 Android smartphones \(multipoint connection\)](#)
- [Connecting the headset to an Android smartphone and an iPhone \(multipoint connection\)](#)

### [Disconnecting Bluetooth connection \(after use\)](#)

## Listening to music

### Listening to music via a Bluetooth connection

- [Listening to music from a device via Bluetooth connection](#)
- [Controlling the audio device \(Bluetooth connection\)](#)
- [Disconnecting Bluetooth connection \(after use\)](#)

### [Supported codecs](#)

## Making phone calls

### [Receiving a call](#)

### [Making a call](#)

### [Functions for a phone call](#)

### [Disconnecting Bluetooth connection \(after use\)](#)

## Using the voice assist function

### [Using the voice assist function \(Google app\)](#)

### [Using the voice assist function \(Siri\)](#)

## Important information

### [Precautions](#)

### [Trademarks](#)

### [Customer support websites](#)

## Troubleshooting

### [What can I do to solve a problem?](#)

### Power/Charging

- [Unable to turn on the headset.](#)
- [Charging cannot be done.](#)
- [Charging time is too long.](#)
- [The headset cannot be charged even if connecting the headset to a computer.](#)
- [The remaining battery charge of the headset is not displayed on the screen of smartphone.](#)

### Sound

- [No sound](#)
- [Low sound level](#)

- [Low sound quality.](#)

- [Sound skips frequently.](#)

## Bluetooth

- [Pairing cannot be done.](#)

- [Unable to make a Bluetooth connection.](#)

- [Distorted sound](#)

- [The Bluetooth wireless communication range is short, or the sound skips.](#)

- [The headset does not operate properly.](#)

- [Cannot hear a person on a call.](#)

- [Low voice from callers](#)

## Resetting or initializing the headset

- [Resetting the headset](#)

- [Initializing the headset to restore factory settings](#)

Wireless Stereo Headset  
WI-C200 / WI-C310

## What you can do with the Bluetooth function

---

The headset uses BLUETOOTH® wireless technology, allowing you to listen to music or make phone calls wirelessly.

### Listening to music

You can receive audio signals from a smartphone or music player to enjoy music wirelessly.



### Talking on the phone

You can make and receive a call hands-free, while leaving your smartphone or mobile phone in your bag or pocket.



## About voice guidance

---

You will hear voice guidance in the following situations via the headset.

- When powering on: "Power on"
- When powering off: "Power off"
- When entering pairing mode: "Bluetooth pairing"
- When establishing a Bluetooth connection: "Bluetooth connected"
- When disconnecting a Bluetooth connection: "Bluetooth disconnected"
- When checking the remaining battery charge: "Battery about XX %" (The "XX" value indicates the approximate remaining charge. Use it as a rough estimate.) / "Battery fully charged"
- When the remaining battery charge is low: "Low battery, please recharge headset"
- When automatically turning off due to low battery: "Please recharge headset. Power off"

Wireless Stereo Headset  
WI-C200 / WI-C310

## Checking the package contents

After opening the package, check that all of the items in the list are included. If any items are missing, contact your dealer.

Numbers in ( ) indicate the item amount.

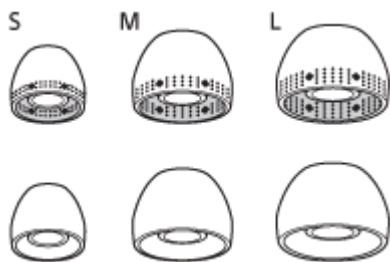
Wireless Stereo Headset

USB Type-C™ cable (USB-A to USB-C™) (approx. 20 cm (7.88 in.)) (1)



Hybrid silicone rubber earbuds (S/M/L 2 each)

- Depending to the headset's color, one of the following size M earbuds is attached.



**S size:** 2 lines or orange

**M size:** 3 lines or green

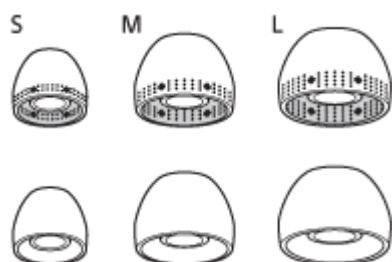
**L size:** 4 lines or light blue

## Replacing the earbuds

Size M hybrid silicone rubber earbuds come attached to the headset. If the earbuds tend to come off or you feel that there is insufficient low frequency sound and a difference in volume between the left and right sides, change the earbuds to another size to comfortably and snugly fit your left and right ears.

### Hybrid silicone rubber earbuds

- Depending to the headset's color, one of the following size M earbuds is attached.

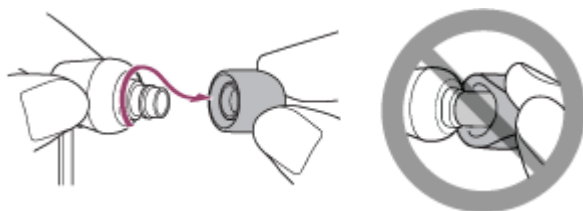


**S size:** 2 lines or orange

**M size:** 3 lines or green

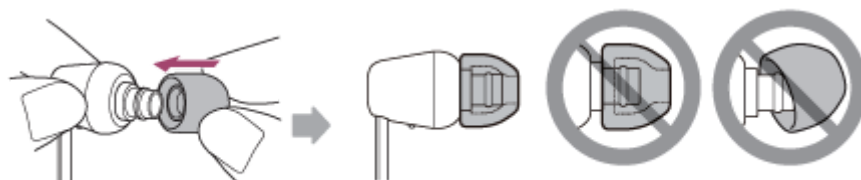
**L size:** 4 lines or light blue

#### 1 Remove the earbuds.



- Do not pinch the end of the earbud when removing it.

#### 2 Attach the earbuds.



- Firmly insert the earbuds all the way. Do not attach the earbuds in a loose or skewed manner.

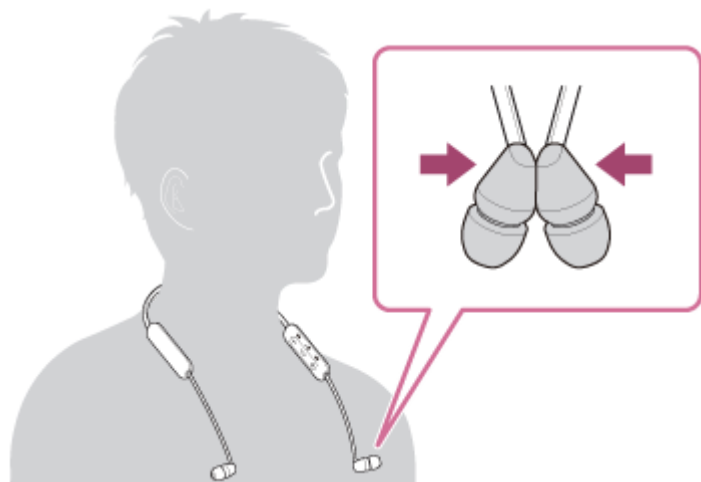


Wireless Stereo Headset  
WI-C200 / WI-C310

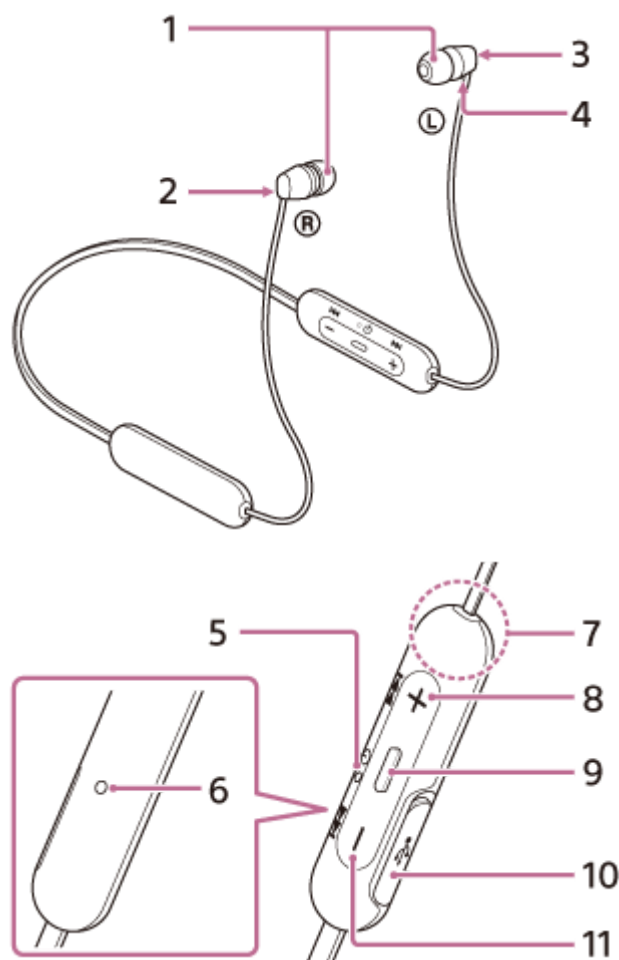
## When you have finished using the headset

---

The headset has a built-in magnet for clasping the left and right units. The magnet prevents the units from getting tangled up when you leave the neckband worn after use.



## Location and function of parts



1. Earbuds
2. Right unit  
The right unit has a ® (right) mark.  
Clasp the left and right units with the built-in magnet.
3. Left unit  
The left unit has a ℒ (left) mark.  
Clasp the left and right units with the built-in magnet.
4. Tactile dot  
The left unit has a tactile dot.
5. Indicator (blue/red)  
Lights up in red while charging.  
Lights up in red or blue to indicate the power or communication status of the headset.
6. Microphone  
Picks up the sound of your voice (when talking on the phone).
7. Built-in antenna  
A Bluetooth antenna is built into the headset.
8. +/ ►► (volume +/-/next) button
9. ◻ / ◻ (power/play/call) button  
Operate to turn on/off the headset, play music, or make a call.
10. USB Type-C port  
Connect the headset to a computer or a commercially available USB AC adaptor with the supplied USB Type-C cable to charge the headset.

## 11. -/ ◀◀ (volume -/previous) button

---

### Related Topic

- [About the indicator](#)
- [Checking the remaining battery charge](#)




5-004-549-11(1) Copyright 2019 Sony Corporation

## About the indicator

You can check various statuses of the headset by the indicator.

● : Turns on in blue / ● : Turns on in red / - : Turns off

### Turning on

- When the remaining battery charge is more than 20%  
● - ● (flashes twice)
- When the remaining battery charge is 20% or lower (requires charging)  
● - ● -  -  -  (flashes twice quickly then flashes for about 15 seconds)




### Turning off

 (lights up for about 2 seconds)

### When the remaining battery charge is low

 -  -  (flashes for about 15 seconds)

### Charging

- While charging  
  
Turns off after the charging is complete.
- Abnormal temperature  
● ● - - ● ● - - (flashes twice each)
- Abnormal charging  
 - -  - -

### Bluetooth function

- Device registration (pairing) mode  
● ● - - ● ● - - (flashes twice each)
- Not connected  
● - - ● - - ● - - (about 1-second intervals)
- Connection process completed  
● ● ● ● ● ● ● ● (flashes quickly for about 5 seconds)
- Connected  
● - - - - - ● - - - - - (about 5-second intervals)
- Incoming call  
● ● ● ● ● ● ● ●

The not connected and connected status indications automatically turn off after a period of time has passed. They start flashing again for a period of time when some operation is performed. When the remaining battery charge becomes low, the indicator (red) starts flashing slowly.

### Other

- Initialization completed  
● ● ● ● (flashes 4 times)  
For details, see [“Initializing the headset to restore factory settings”](#).



## Charging the headset

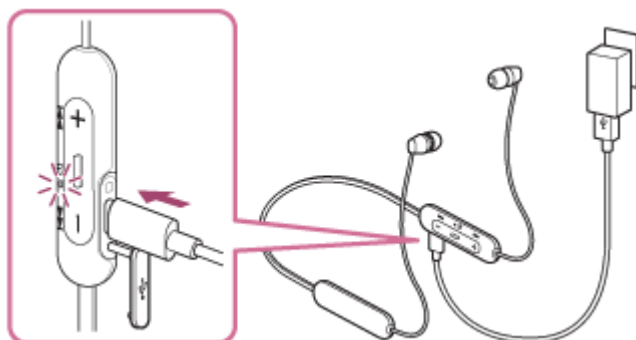
The headset contains a built-in lithium-ion rechargeable battery. Use the supplied USB Type-C cable to charge the headset before use.

### 1 Open the USB Type-C port cover.



### 2 Connect the headset and an AC outlet.

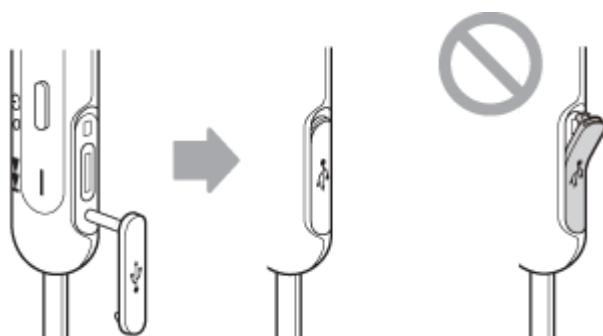
Use the supplied USB Type-C cable and a commercially available USB AC adaptor to connect the headset to an AC outlet.



- The indicator (red) of the headset lights up.
- Charging is completed in about 3 hours (\*) and the indicator (red) turns off automatically.

\* Time required for charging the empty battery to its full capacity. The charging time may differ depending on the conditions of use.

After charging is complete, disconnect the USB Type-C cable and close the USB port cover securely to prevent water or dust from entering the headset.



## USB AC adaptor

A commercially available USB AC adaptor capable of supplying an output current of 0.5 A (500 mA)

## Personal Computer

Personal computer with a standard USB port

- We do not guarantee operation on all computers.
- Operations using a custom-built or homebuilt computer are not guaranteed.

### Hint

- The headset can be also charged by connecting to a running computer using the supplied USB Type-C cable.
- If charging starts while the headset is turned on, the headset will turn off automatically.

### Note

- Charging may not be successful with cables other than the supplied USB Type-C cable.
- Charging may not be successful depending on the type of USB AC adaptor.
- When the headset is connected to an AC outlet or computer, all operations such as turning on the headset, registering or connecting to Bluetooth devices, and music playback cannot be performed.
- The headset cannot be charged when the computer goes into standby (sleep) or hibernation mode. In this case, change the computer settings, and start charging the headset once again.
- If the headset is not used for a long time, the rechargeable battery usage hours may be reduced. However, the battery life will improve after a few recharges.
- If you store the headset for a long time, charge the battery to its full capacity once every 6 months to avoid over-discharge.
- If the headset is not used for a long time, it may take longer to charge the battery.
- If the headset detects a problem while charging due to the following causes, the indicator (red) flashes. In this case, charge once again within the charging temperature range. If the problem persists, consult with your Sony dealer.
  - Ambient temperature exceeds the charging temperature range of 5 °C – 35 °C (41 °F - 95 °F).
  - There is a problem with the battery.
- If the headset is not used for a long time, the indicator (red) may not light up right away when charging. Please wait a moment until the indicator (red) lights up.
- If the usage hours of the built-in rechargeable battery decreases significantly, the battery should be replaced. Consult with your nearest Sony dealer to replace the rechargeable battery.
- Avoid exposure to extreme temperature changes, direct sunlight, moisture, sand, dust, and electrical shock. Never leave the headset in a parked vehicle.
- When connecting the headset to a computer, use only the supplied USB Type-C cable, and be sure to directly connect them. Charging will not be properly completed when the headset is connected through a USB hub.

## Available operating time

---

The available operating times of the headset with the battery fully charged are as follows:

### Bluetooth connection

**Music playback time (AAC):** Max. 15 hours

**Music playback time (SBC):** Max. 13 hours

- About 60 minutes of music playback is possible after 10 minutes charging.

**Communication time:** Max. 15 hours

**Standby time:** Max. 200 hours

#### Note

- Usage hours may be different depending on the conditions of use.

---

### Related Topic

- [Supported codecs](#)



## Checking the remaining battery charge

You can check the remaining battery charge of the rechargeable battery.

When you turn on the headset, the voice guidance indicating the remaining battery charge can be heard.

“Battery about XX %” (The “XX” value indicates the approximate remaining charge.)

“Battery fully charged”

The remaining battery charge indicated by the voice guidance may differ from the actual remaining charge in some cases. Please use it as a rough estimate.

In addition, the indicator (red) flashes (about 15 seconds) if the remaining battery charge is 20% or lower when the headset is turned on.

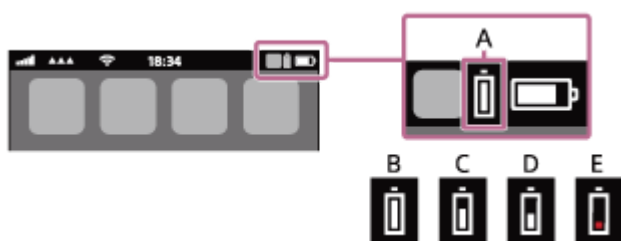
### When the remaining charge is low

The currently operating indicator display changes to red. If you hear the voice guidance say, “Low battery, please recharge headset”, charge the headset as soon as possible.

When the battery becomes completely empty, the headset sounds a warning beep, the voice guidance says, “Please recharge headset. Power off”, and the headset automatically turns off.

### When you are using an iPhone or iPod touch

When the headset is connected to an iPhone or iPod touch over an HFP Bluetooth connection, it will show an icon that indicates the remaining battery charge of the headset on the screen.



**A:** Remaining battery charge of the headset

**B:** 100% - 70%

**C:** 70% - 50%

**D:** 50% - 20%

**E:** 20% or lower (needs to charge)

The remaining battery charge of the headset is also displayed on the widget of an iPhone or iPod touch running iOS 9 or later. For more details, refer to the operating instructions supplied with the iPhone or iPod touch.

The remaining charge which is displayed may differ from the actual remaining charge in some cases. Please use it as a rough estimate.

### When you are using an Android smartphone (OS 8.1 or later)

When the headset is connected to an Android smartphone over an HFP Bluetooth connection, select [Settings] - [Device connection] - [Bluetooth] to display the remaining battery charge of the headset. It is displayed as “100%”, “70%”, “50%”, or “20%”. For more details, refer to the operating instructions supplied with the smartphone.

The remaining charge which is displayed may differ from the actual remaining charge in some cases. Please use it as a rough estimate.

#### Note

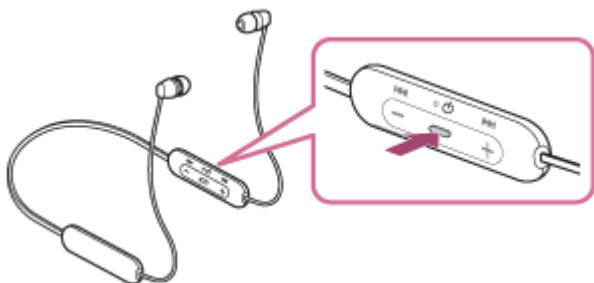
- If you connect the headset to an iPhone, iPod touch, or Android smartphone with “Media audio” (A2DP) only in a multipoint connection, the remaining battery charge will not be displayed correctly.

- The remaining battery charge may not be properly displayed if the headset has not been used for a long time. In this case, repeatedly charge and discharge the battery multiple times to properly display the remaining battery charge.

5-004-549-11(1) Copyright 2019 Sony Corporation

## Turning on the headset

- 1 Press and hold the  button for about 2 seconds until the indicator (blue) flashes.

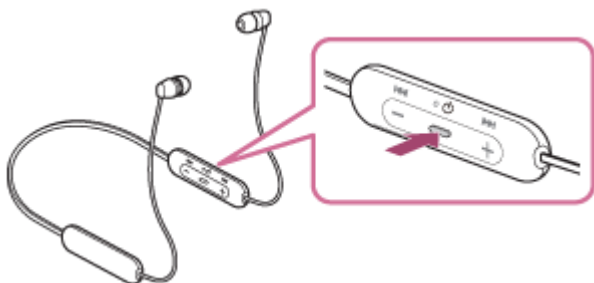


### Related Topic

- [Turning off the headset](#)

## Turning off the headset

- 1 Press and hold the  button for about 2 seconds until the indicator (blue) turns off.



### Related Topic

- [Turning on the headset](#)

## How to make a wireless connection to Bluetooth devices

---

You can enjoy music and hands-free calling with the headset wirelessly by using your device's Bluetooth function.

### **Device registration (pairing)**

To use the Bluetooth function, both of the connecting devices must be registered in advance. The operation to register a device is called device registration (pairing).

Operate the headset and a device to perform device registration (pairing).

### **Connecting the headset to a registered (paired) device**

Once a device is registered (paired), it is not necessary to register it again. Connect to a device that is already registered (paired) with the headset using the appropriate method.

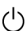
## Pairing and connecting with an Android smartphone

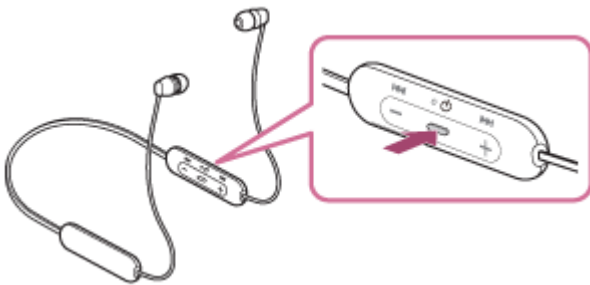
The operation to register the device that you wish to connect to is called “pairing”. First, pair a device to use it with the headset for the first time.

Before you start the pairing operation, make sure that:

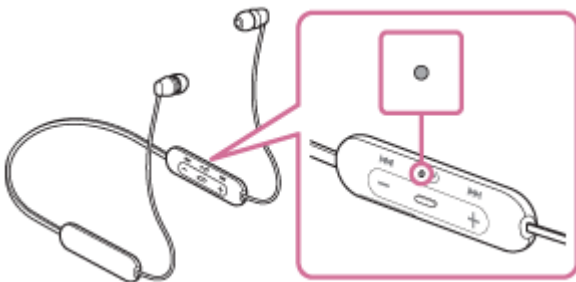
- The Android smartphone is placed within 1 m (3 feet) of the headset.
- The headset is charged sufficiently.
- The operating instructions of the smartphone is in hand.

### 1 Enter pairing mode on this headset.

Turn on the headset when you pair the headset with a device for the first time after you bought it or after you initialized the headset (the headset has no pairing information). The headset enters pairing mode automatically. When you pair a second or subsequent device (the headset has pairing information for other devices), press and hold the  button for about 7 seconds.



Check that the indicator (blue) repeatedly flashes twice in a row. You will hear a voice guidance “Bluetooth pairing”.



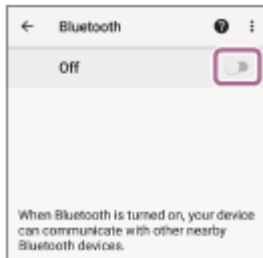
### 2 Unlock the screen of the Android smartphone if it is locked.

### 3 Search for the headset on the Android smartphone.

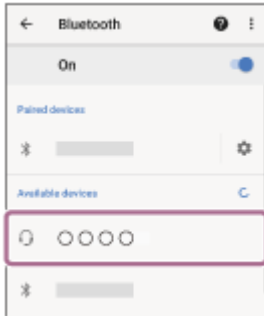
1. Select [Settings] - [Device connection] - [Bluetooth].



2. Touch the switch to turn on the Bluetooth function.



#### 4 Touch [WI-C200] or [WI-C310].



If Passkey (\*) input is required, input "0000".

The headset and smartphone are paired and connected with each other. You will hear a voice guidance "Bluetooth connected".

If they are not connected, see ["Connecting to a paired Android smartphone"](#).

If [WI-C200] or [WI-C310] does not appear on the Android smartphone screen, try again from step 3.

\* A Passkey may be called "Passcode", "PIN code", or "Password".

#### Hint

- The above procedure is an example. For more details, refer to the operating instructions supplied with the Android smartphone.
- To delete all pairing information, see ["Initializing the headset to restore factory settings"](#).

#### Note

- If pairing is not established within 5 minutes, pairing mode is canceled, and the headset turns off. In this case, start the operation over from step 1.
- Once Bluetooth devices are paired, there is no need to pair them again, except in the following cases:
  - Pairing information has been deleted after repair, etc.
  - When a 9th device is paired  
The headset can be paired with up to 8 devices. If a new device is paired after 8 devices are already paired, the registration information of the paired device with the oldest connection date is overwritten with the information for the new device.
  - When the pairing information for the headset has been deleted from the Bluetooth device.
  - When the headset is initialized  
All of the pairing information is deleted. In this case, delete the pairing information for the headset from the Bluetooth device and then pair them again.
- The headset can be paired with multiple devices, but can only play music from one paired device at a time.

#### Related Topic

- [How to make a wireless connection to Bluetooth devices](#)
- [Connecting to a paired Android smartphone](#)
- [Listening to music from a device via Bluetooth connection](#)
- [Disconnecting Bluetooth connection \(after use\)](#)

- [Initializing the headset to restore factory settings](#)

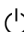
5-004-549-11(1) Copyright 2019 Sony Corporation

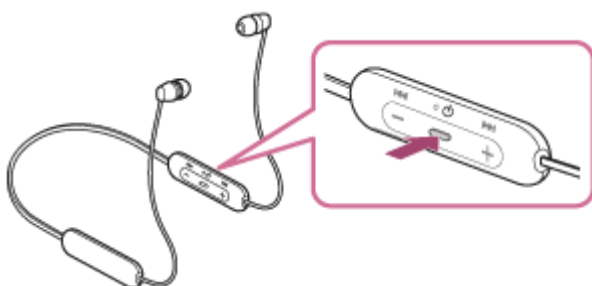


## Connecting to a paired Android smartphone

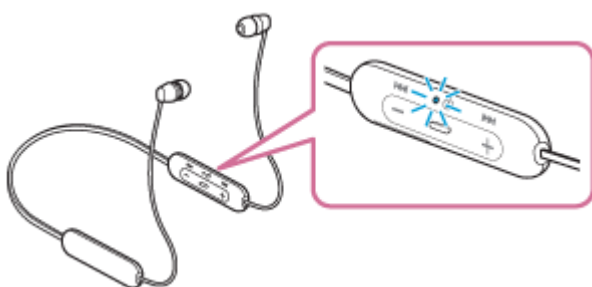
- 1 **Unlock the screen of the Android smartphone if it is locked.**

- 2 **Turn on the headset.**

Press and hold the  button for about 2 seconds.



Check that the indicator (blue) continues to flash after you release your finger from the button. You will hear a voice guidance "Power on".



After the headset turns on, if it has automatically connected to the last connected device, you will hear a voice guidance "Bluetooth connected".

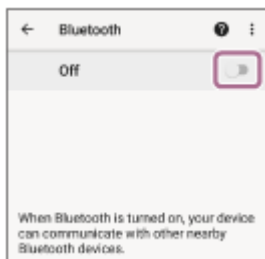
Check the connection status on the Android smartphone. If it is not connected, proceed to step 3.

- 3 **Display the devices paired with the Android smartphone.**

1. Select [Settings] - [Device connection] - [Bluetooth].

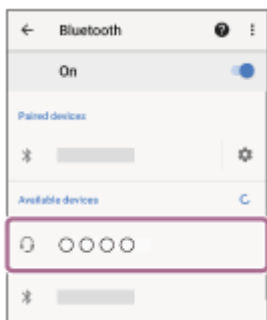


2. Touch the switch to turn on the Bluetooth function.



#### 4 Touch [WI-C200] or [WI-C310].

You will hear a voice guidance “Bluetooth connected”.



#### Hint

- The above procedure is an example. For more details, refer to the operating instructions supplied with the Android smartphone.

#### Note

- If the last-connected Bluetooth device is placed near the headset, the headset may connect automatically to the device by simply turning on the headset. In that case, deactivate the Bluetooth function on the device or turn off the power.
- If you cannot connect your smartphone to the headset, delete the headset pairing information on your smartphone and perform the pairing again. As for the operations on your smartphone, refer to the operating instructions supplied with the smartphone.

#### Related Topic

- [How to make a wireless connection to Bluetooth devices](#)
- [Pairing and connecting with an Android smartphone](#)
- [Listening to music from a device via Bluetooth connection](#)
- [Disconnecting Bluetooth connection \(after use\)](#)

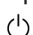
## Pairing and connecting with an iPhone

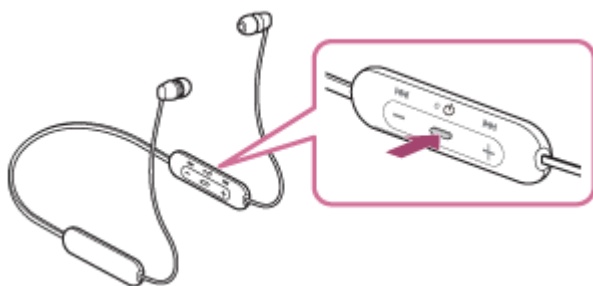
The operation to register the device that you wish to connect to is called “pairing”. First, pair a device to use it with the headset for the first time.

Before you start the pairing operation, make sure that:

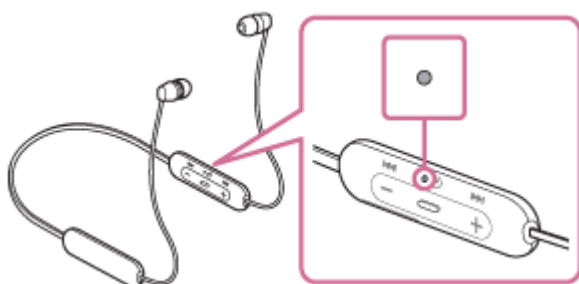
- The iPhone is placed within 1 m (3 feet) of the headset.
- The headset is charged sufficiently.
- The operating instructions of the iPhone is in hand.

### 1 Enter pairing mode on this headset.

Turn on the headset when you pair the headset with a device for the first time after you bought it or after you initialized the headset (the headset has no pairing information). The headset enters pairing mode automatically. When you pair a second or subsequent device (the headset has pairing information for other devices), press and hold the  button for about 7 seconds.



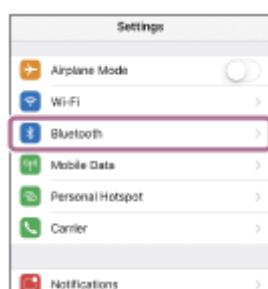
Check that the indicator (blue) repeatedly flashes twice in a row. You will hear a voice guidance “Bluetooth pairing”.



### 2 Unlock the screen of the iPhone if it is locked.

### 3 Select the Bluetooth setting on the iPhone.

1. Select [Settings].
2. Touch [Bluetooth].



3. Touch the switch to turn on the Bluetooth function.



- 4 Touch [WI-C200] or [WI-C310].



If Passkey (\*) input is required, input "0000".

The headset and iPhone are paired and connected with each other. You will hear a voice guidance "Bluetooth connected".

If they are not connected, see ["Connecting to a paired iPhone"](#).

If [WI-C200] or [WI-C310] does not appear on the display, try again from step 3.

\* A Passkey may be called "Passcode", "PIN code", or "Password".

### Hint

- The above procedure is an example. For more details, refer to the operating instructions supplied with the iPhone.
- To delete all Bluetooth pairing information, see ["Initializing the headset to restore factory settings"](#).

### Note

- If pairing is not established within 5 minutes, pairing mode is canceled, and the headset turns off. In this case, start the operation over from step 1.
- Once Bluetooth devices are paired, there is no need to pair them again, except in the following cases:
  - Pairing information has been deleted after repair, etc.
  - When a 9th device is paired.  
The headset can be paired with up to 8 devices. If a new device is paired after 8 devices are already paired, the registration information of the paired device with the oldest connection date is overwritten with the information for the new device.
  - When the pairing information for the headset has been deleted from the Bluetooth device.
  - When the headset is initialized.  
All of the pairing information is deleted. In this case, delete the pairing information for the headset from the device and then pair them again.
- The headset can be paired with multiple devices, but can only play music from 1 paired device at a time.

### Related Topic

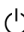
- [How to make a wireless connection to Bluetooth devices](#)
- [Connecting to a paired iPhone](#)
- [Listening to music from a device via Bluetooth connection](#)
- [Disconnecting Bluetooth connection \(after use\)](#)
- [Initializing the headset to restore factory settings](#)

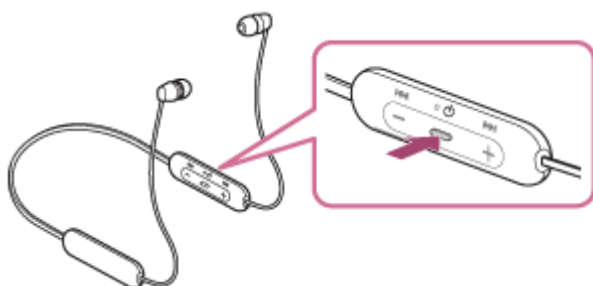


## Connecting to a paired iPhone

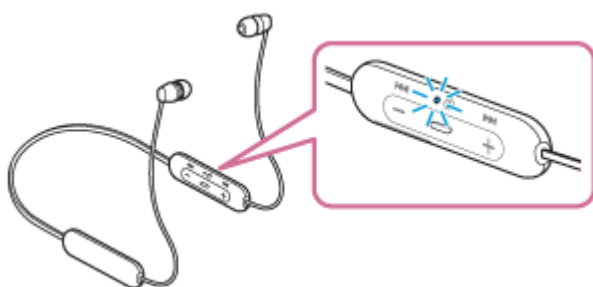
**1** Unlock the screen of the iPhone if it is locked.

**2** Turn on the headset.

Press and hold the  button for about 2 seconds.



Check that the indicator (blue) continues to flash after you release your finger from the button. You will hear the voice guidance "Power on".

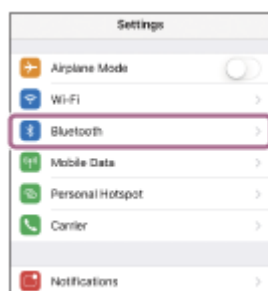


After the headset turns on, if it has automatically connected to the last connected device, you will hear a voice guidance "Bluetooth connected".

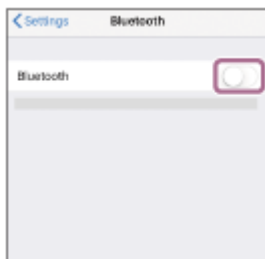
Check the connection status on the iPhone. If it is not connected, proceed to step 3.

**3** Display the devices paired with the iPhone.

1. Select [Settings].
2. Touch [Bluetooth].



3. Touch the switch to turn on the Bluetooth function.



#### 4 Touch [WI-C200] or [WI-C310].

You will hear a voice guidance “Bluetooth connected”.



#### Hint

- The above procedure is an example. For more details, refer to the operating instructions supplied with the iPhone.

#### Note

- If the last-connected Bluetooth device is placed near the headset, the headset may connect automatically to the device by simply turning on the headset. In that case, deactivate the Bluetooth function on the device or turn off the power.
- If you cannot connect your iPhone to the headset, delete the headset pairing information on your iPhone and perform the pairing again. As for the operations on your iPhone, refer to the operating instructions supplied with the iPhone.

#### Related Topic

- [How to make a wireless connection to Bluetooth devices](#)
- [Pairing and connecting with an iPhone](#)
- [Listening to music from a device via Bluetooth connection](#)
- [Disconnecting Bluetooth connection \(after use\)](#)

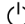
## Pairing and connecting with a computer (Windows 10)

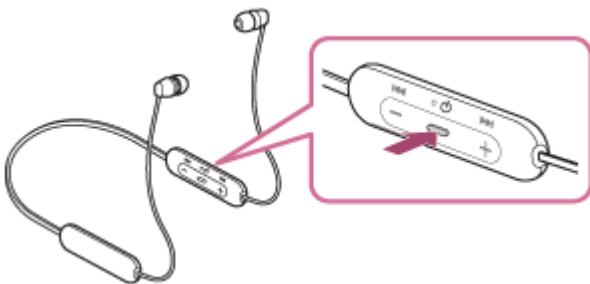
The operation to register the device that you wish to connect to is called “pairing”. First, pair a device to use it with the headset for the first time.

Before you start the pairing operation, make sure that:

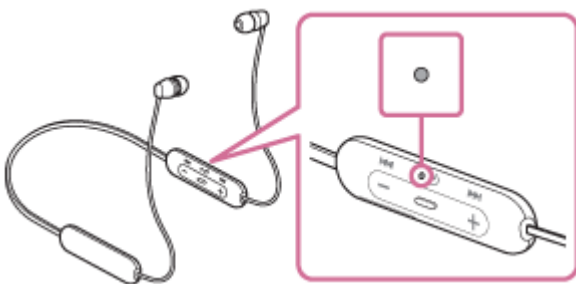
- Your computer has a Bluetooth function that supports music playback connections (A2DP).
- The computer is placed within 1 m (3 feet) of the headset.
- The headset is charged sufficiently.
- The operating instructions of the computer is in hand.
- Depending on the computer you are using, the built-in Bluetooth adaptor may need to be turned on. If you do not know how to turn on the Bluetooth adaptor or are unsure if your computer has a built-in Bluetooth adaptor, refer to the operating instructions supplied with the computer.

### 1 Enter pairing mode on this headset.

Turn on the headset when you pair the headset with a device for the first time after you bought it or after you initialized the headset (the headset has no pairing information). The headset enters pairing mode automatically. When you pair a second or subsequent device (the headset has pairing information for other devices), press and hold the  button for about 7 seconds.



Check that the indicator (blue) repeatedly flashes twice in a row. You will hear a voice guidance “Bluetooth pairing”.

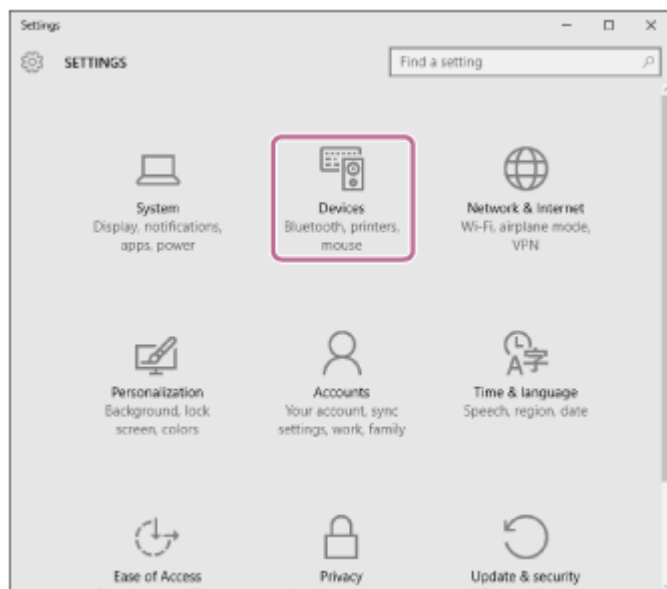


### 2 Wake the computer up from sleep mode.

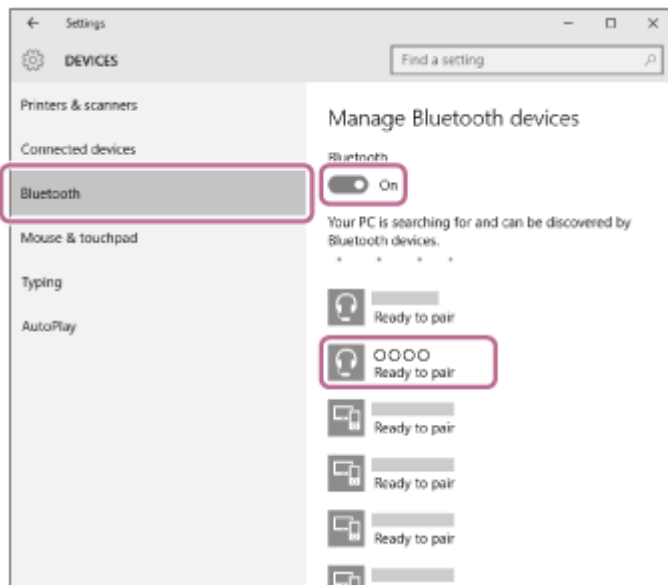
### 3 Register the headset using the computer.

1. Click the [Start] button, then [Settings].
2. Click [Devices].

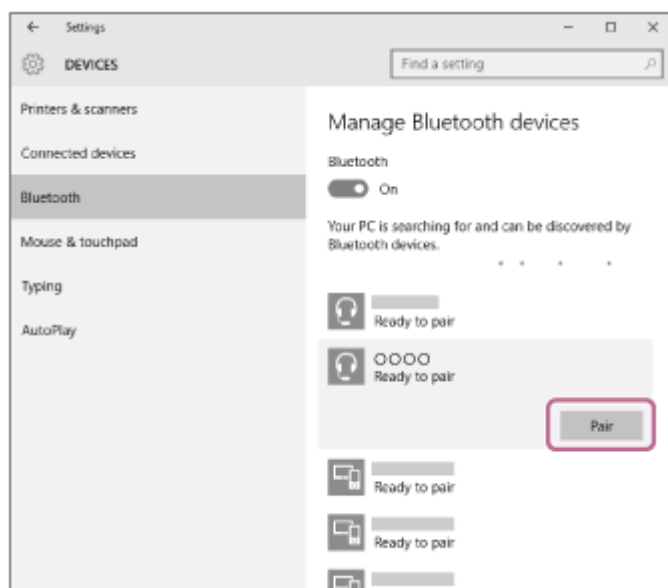




3. Click the [Bluetooth] tab, click the [Bluetooth] switch to turn on the Bluetooth function, then select [WI-C200] or [WI-C310].



4. Click [Pair].



If Passkey (\*) input is required, input "0000".

The headset and computer are paired and connected with each other. You will hear a voice guidance “Bluetooth connected”.

If they are not connected, see “[Connecting to a paired computer \(Windows 10\)](#)”.

If [WI-C200] or [WI-C310] does not appear on the display, try again from step 3.

\* A Passkey may be called “Passcode”, “PIN code”, or “Password”.

### Hint

- The above procedure is an example. For more details, refer to the operating instructions supplied with the computer.
- To delete all pairing information, see “[Initializing the headset to restore factory settings](#)”.

### Note

- If pairing is not established within 5 minutes, pairing mode is canceled, and the headset turns off. In this case, start the operation over from step 1.
- Once Bluetooth devices are paired, there is no need to pair them again, except in the following cases:
  - Pairing information has been deleted after repair, etc.
  - When a 9th device is paired  
The headset can be paired with up to 8 devices. If a new device is paired after 8 devices are already paired, the registration information of the paired device with the oldest connection date is overwritten with the information for the new device.
  - When the pairing information for the headset has been deleted from the Bluetooth device.
  - When the headset is initialized  
All of the pairing information is deleted. In this case, delete the pairing information for the headset from the device and then pair them again.
- The headset can be paired with multiple devices, but can only play music from 1 paired device at a time.

---

### Related Topic

- [How to make a wireless connection to Bluetooth devices](#)
- [Connecting to a paired computer \(Windows 10\)](#)
- [Listening to music from a device via Bluetooth connection](#)
- [Disconnecting Bluetooth connection \(after use\)](#)
- [Initializing the headset to restore factory settings](#)

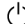
## Pairing and connecting with a computer (Windows 8.1)

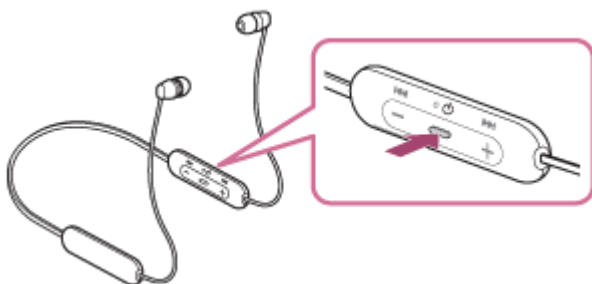
The operation to register the device that you wish to connect to is called “pairing”. First, pair a device to use it with the headset for the first time.

Before you start the pairing operation, make sure that:

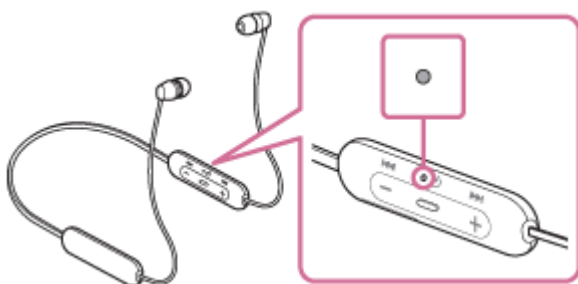
- Your computer has a Bluetooth function that supports music playback connections (A2DP).
- The computer is placed within 1 m (3 feet) of the headset.
- The headset is charged sufficiently.
- The operating instructions of the computer is in hand.
- Depending on the computer you are using, the built-in Bluetooth adaptor may need to be turned on. If you do not know how to turn on the Bluetooth adaptor or are unsure if your computer has a built-in Bluetooth adaptor, refer to the operating instructions supplied with the computer.

### 1 Enter pairing mode on this headset.

Turn on the headset when you pair the headset with a device for the first time after you bought it or after you initialized the headset (the headset has no pairing information). The headset enters pairing mode automatically. When you pair a second or subsequent device (the headset has pairing information for other devices), press and hold the  button for about 7 seconds.



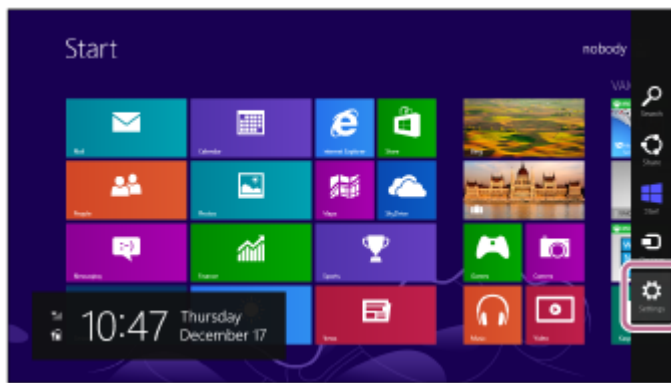
Check that the indicator (blue) repeatedly flashes twice in a row. You will hear a voice guidance “Bluetooth pairing”.



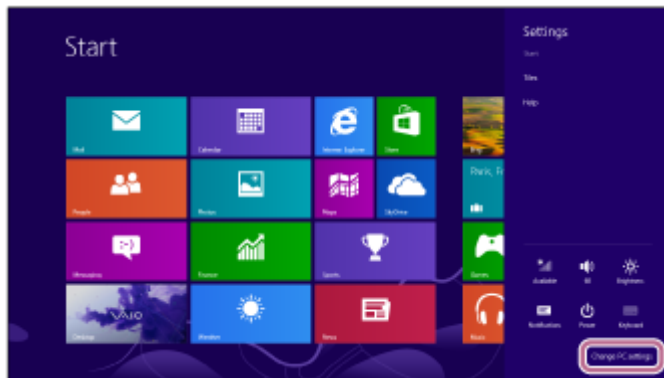
### 2 Wake the computer up from sleep mode.

### 3 Register the headset using the computer.

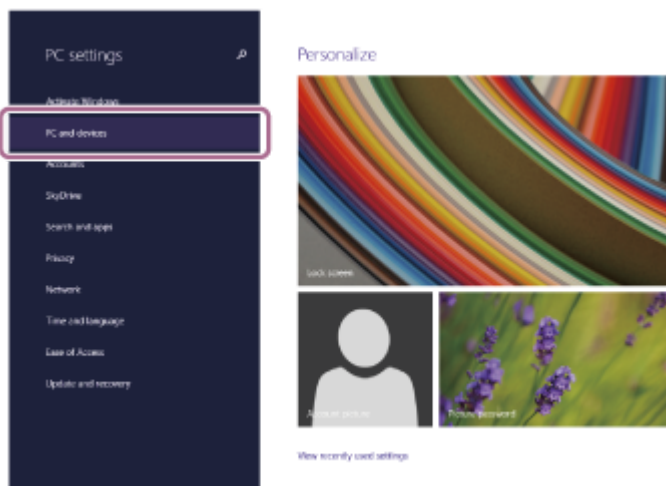
1. Move the mouse pointer to the top-right corner of the screen (when using a touch panel, swipe from the right edge of the screen), then select [Settings] from the Charm Bar.



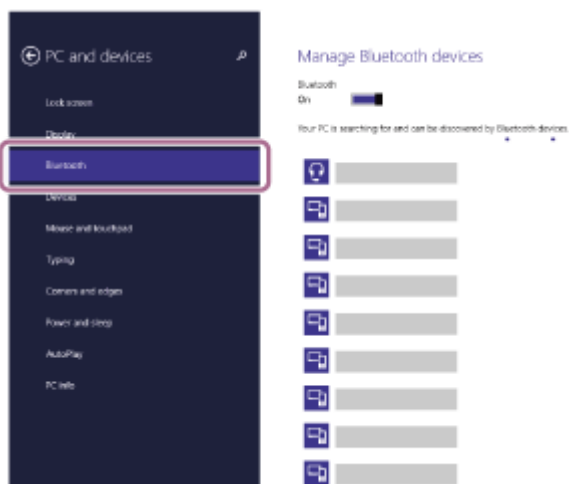
2. Select [Change PC Settings] of the [Settings] charm.



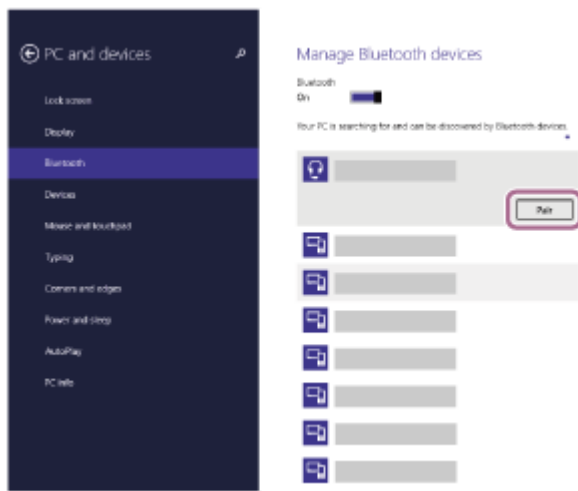
3. Select [PC and devices] of [PC Settings].



4. Select [Bluetooth].



5. Select [WI-C200] or [WI-C310], then click [Pair].



If Passkey (\*) input is required, input "0000".

The headset and computer are paired and connected with each other. You will hear a voice guidance "Bluetooth connected".

If they are not connected, see ["Connecting to a paired computer \(Windows 8.1\)"](#).

If [WI-C200] or [WI-C310] does not appear on the display, try again from step 3.

\* A Passkey may be called "Passcode", "PIN code", or "Password".

### Hint

- The above procedure is an example. For more details, refer to the operating instructions supplied with the computer.
- To delete all Bluetooth pairing information, see ["Initializing the headset to restore factory settings"](#).

### Note

- If pairing is not established within 5 minutes, pairing mode is canceled, and the headset turns off. In this case, start the operation over from step 1.
- Once Bluetooth devices are paired, there is no need to pair them again, except in the following cases:
  - Pairing information has been deleted after repair, etc.
  - When a 9th device is paired.  
The headset can be paired with up to 8 devices. If a new device is paired after 8 devices are already paired, the registration information of the paired device with the oldest connection date is overwritten with the information for the new device.
  - When the pairing information for the headset has been deleted from the Bluetooth device.
  - When the headset is initialized.  
All of the pairing information is deleted. In this case, delete the pairing information for the headset from the device and then pair them again.
- The headset can be paired with multiple devices, but can only play music from 1 paired device at a time.

### Related Topic

- [How to make a wireless connection to Bluetooth devices](#)
- [Connecting to a paired computer \(Windows 8.1\)](#)
- [Listening to music from a device via Bluetooth connection](#)
- [Disconnecting Bluetooth connection \(after use\)](#)
- [Initializing the headset to restore factory settings](#)

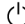
## Pairing and connecting with a computer (Windows 7)

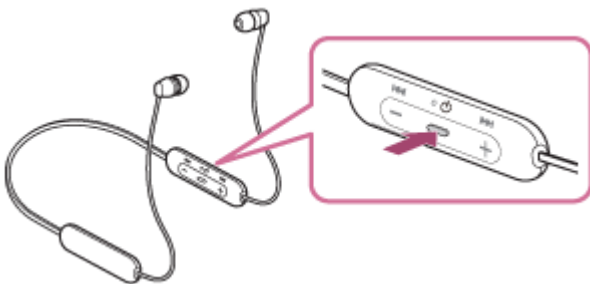
The operation to register the device that you wish to connect to is called “pairing”. First, pair a device to use it with the headset for the first time.

Before you start the pairing operation, make sure that:

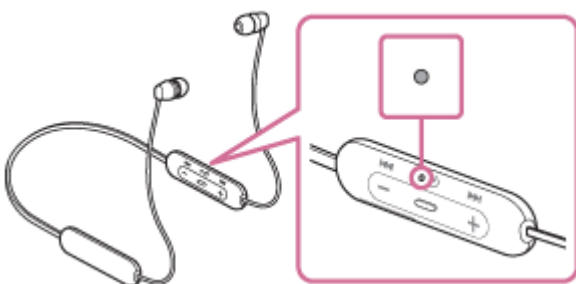
- Your computer has a Bluetooth function that supports music playback connections (A2DP).
- The computer is placed within 1 m (3 feet) of the headset.
- The headset is charged sufficiently.
- The operating instructions of the computer is in hand.
- Depending on the computer you are using, the built-in Bluetooth adaptor may need to be turned on. If you do not know how to turn on the Bluetooth adaptor or are unsure if your computer has a built-in Bluetooth adaptor, refer to the operating instructions supplied with the computer.

### 1 Enter pairing mode on this headset.

Turn on the headset when you pair the headset with a device for the first time after you bought it or after you initialized the headset (the headset has no pairing information). The headset enters pairing mode automatically. When you pair a second or subsequent device (the headset has pairing information for other devices), press and hold the  button for about 7 seconds.



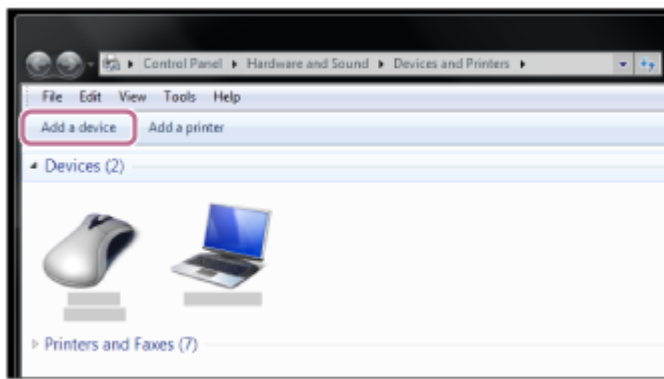
Check that the indicator (blue) repeatedly flashes twice in a row. You will hear a voice guidance “Bluetooth pairing”.



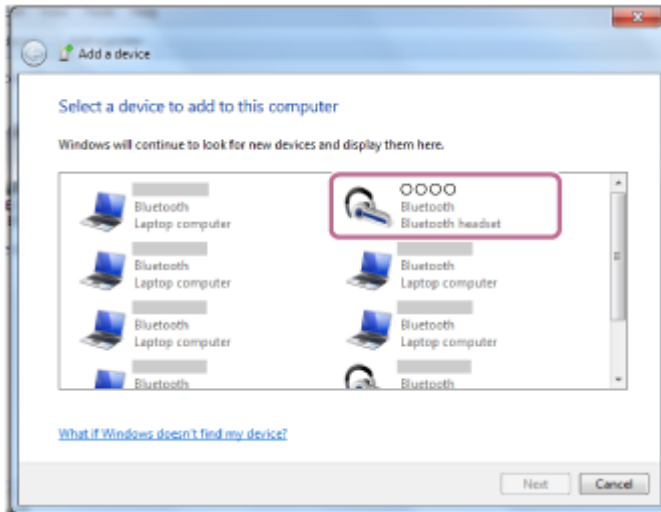
### 2 Wake the computer up from sleep mode.

### 3 Search for the headset using the computer.

1. Click the [Start] button, then [Devices and Printers].
2. Click [Add a device].



**4** Select [WI-C200] or [WI-C310], then click [Next].



If Passkey (\*) input is required, input "0000".

The headset and computer are paired and connected with each other. You will hear a voice guidance "Bluetooth connected".

If they are not connected, see "[Connecting to a paired computer \(Windows 7\)](#)".

If [WI-C200] or [WI-C310] does not appear on the display, try again from step 3.

\* A Passkey may be called "Passcode", "PIN code", or "Password".

## Hint

- The above procedure is an example. For more details, refer to the operating instructions supplied with the computer.
- To delete all Bluetooth pairing information, see "[Initializing the headset to restore factory settings](#)".

## Note

- If pairing is not established within 5 minutes, pairing mode is canceled, and the headset turns off. In this case, start the operation over from step 1.
- Once Bluetooth devices are paired, there is no need to pair them again, except in the following cases:
  - Pairing information has been deleted after repair, etc.
  - When a 9th device is paired.  
The headset can be paired with up to 8 devices. If a new device is paired after 8 devices are already paired, the registration information of the paired device with the oldest connection date is overwritten with the information for the new device.
  - When the pairing information for the headset has been deleted from the Bluetooth device.
  - When the headset is initialized.  
All of the pairing information is deleted. In this case, delete the pairing information for the headset from the device and then pair them again.
- The headset can be paired with multiple devices, but can only play music from 1 paired device at a time.

---

## Related Topic

- [How to make a wireless connection to Bluetooth devices](#)
- [Connecting to a paired computer \(Windows 7\)](#)
- [Listening to music from a device via Bluetooth connection](#)
- [Disconnecting Bluetooth connection \(after use\)](#)
- [Initializing the headset to restore factory settings](#)

5-004-549-11(1) Copyright 2019 Sony Corporation



## Pairing and connecting with a computer (Mac)

The operation to register the device that you wish to connect to is called “pairing”. First, pair a device to use it with the headset for the first time.

### Compatible OS

macOS (version 10.10 or later)

Before you start the pairing operation, make sure that:

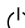
- Your computer has a Bluetooth function that supports music playback connections (A2DP).
- The computer is placed within 1 m (3 feet) of the headset.
- The headset is charged sufficiently.
- The operating instructions of the computer is in hand.
- Depending on the computer you are using, the built-in Bluetooth adaptor may need to be turned on. If you do not know how to turn on the Bluetooth adaptor or are unsure if your computer has a built-in Bluetooth adaptor, refer to the operating instructions supplied with the computer.
- Set the computer speaker to the ON mode.

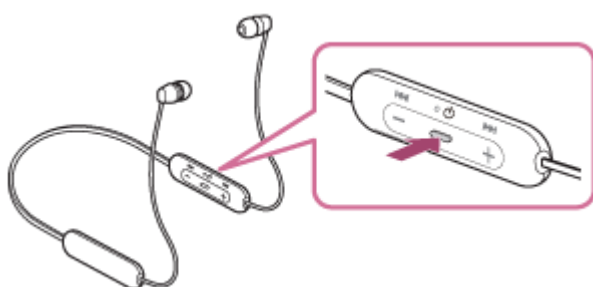
If the computer speaker is set to the  “OFF” mode, no sound is heard from the headset.

Computer speaker in the ON mode

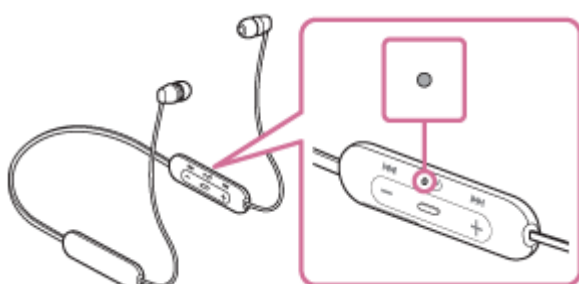


### 1 Enter pairing mode on this headset.

Turn on the headset when you pair the headset with a device for the first time after you bought it or after you initialized the headset (the headset has no pairing information). The headset enters pairing mode automatically. When you pair a second or subsequent device (the headset has pairing information for other devices), press and hold the  button for about 7 seconds.




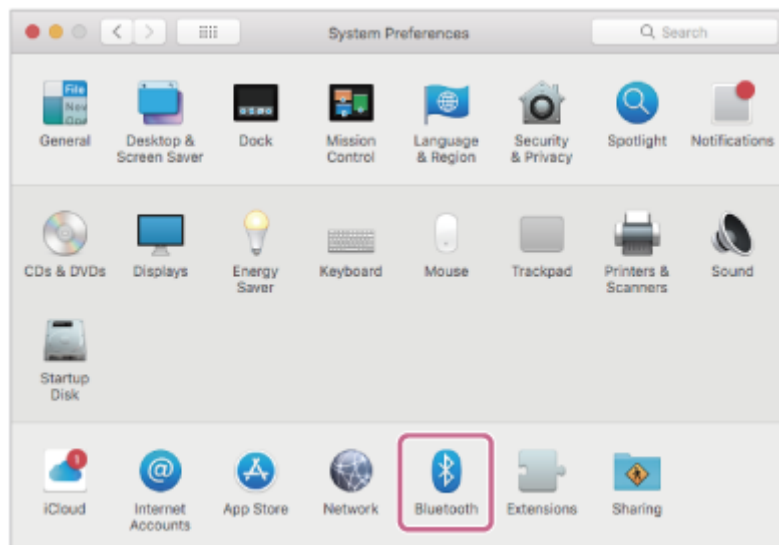
Check that the indicator (blue) repeatedly flashes twice in a row. You will hear a voice guidance “Bluetooth pairing”.



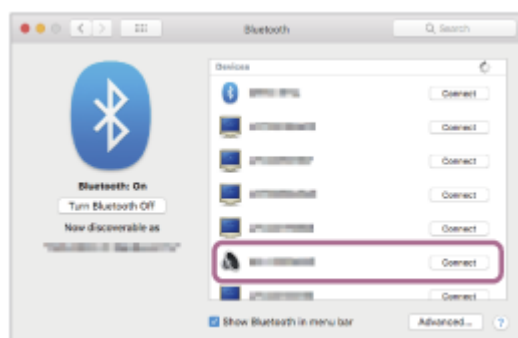
### 2 Wake the computer up from sleep mode.

### 3 Register the headset using the computer.

1. Select [  (System Preferences)] - [Bluetooth] from the task bar in the lower right part of the screen.



2. Select [WI-C200] or [WI-C310] from the Bluetooth screen and click [Connect].



If Passkey (\*) input is required, input "0000".

The headset and computer are paired and connected with each other. You will hear a voice guidance "Bluetooth connected".

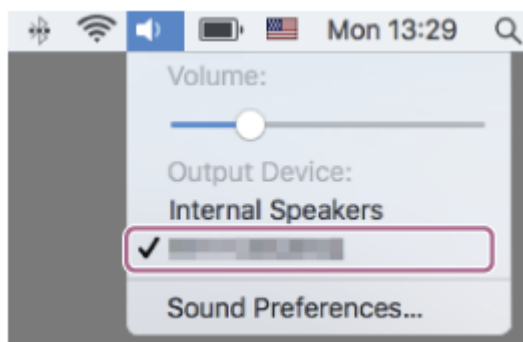
If they are not connected, see "[Connecting to a paired computer \(Mac\)](#)".

If [WI-C200] or [WI-C310] does not appear on the display, try again from step 3.

\* A Passkey may be called "Passcode", "PIN code", or "Password".

### 4 Click the speaker icon in the upper right part of the screen and select [WI-C200] or [WI-C310].

Now you are ready to enjoy music playback on your computer.



#### Hint

- The above procedure is an example. For more details, refer to the operating instructions supplied with the computer.

- To delete all pairing information, see [“Initializing the headset to restore factory settings”](#).

### Note

- If pairing is not established within 5 minutes, pairing mode is canceled, and the headset turns off. In this case, start the operation over from step 1.
- Once Bluetooth devices are paired, there is no need to pair them again, except in the following cases:
  - Pairing information has been deleted after repair, etc.
  - When a 9th device is paired  
The headset can be paired with up to 8 devices. If a new device is paired after 8 devices are already paired, the registration information of the paired device with the oldest connection date is overwritten with the information for the new device.
  - When the pairing information for the headset has been deleted from the Bluetooth device.
  - When the headset is initialized  
All of the pairing information is deleted. In this case, delete the pairing information for the headset from the device and then pair them again.
- The headset can be paired with multiple devices, but can only play music from 1 paired device at a time.

---

### Related Topic

- [How to make a wireless connection to Bluetooth devices](#)
- [Connecting to a paired computer \(Mac\)](#)
- [Listening to music from a device via Bluetooth connection](#)
- [Disconnecting Bluetooth connection \(after use\)](#)
- [Initializing the headset to restore factory settings](#)


## Connecting to a paired computer (Windows 10)

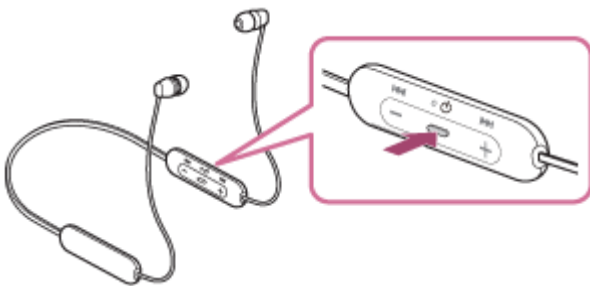
Before starting the operation, make sure of the following:

- Depending on the computer you are using, the built-in Bluetooth adaptor may need to be turned on. If you do not know how to turn on the Bluetooth adaptor or are unsure if your computer has a built-in Bluetooth adaptor, refer to the operating instructions supplied with the computer.

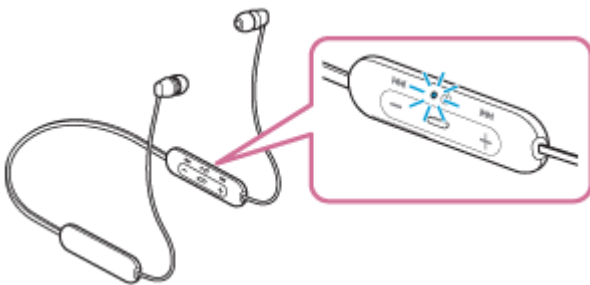
### 1 Wake the computer up from sleep mode.

### 2 Turn on the headset.

Press and hold the  button for about 2 seconds.



Check that the indicator (blue) continues to flash after you release your finger from the button. You will hear the voice guidance "Power on".

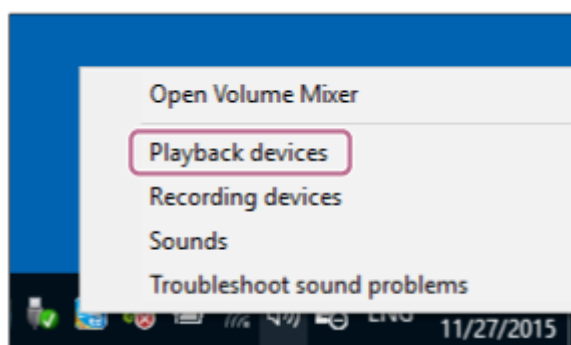


After the headset turns on, if it has automatically connected to the last connected device, you will hear a voice guidance "Bluetooth connected".

Check the connection status on the computer, and if it is not established, proceed to step 3.

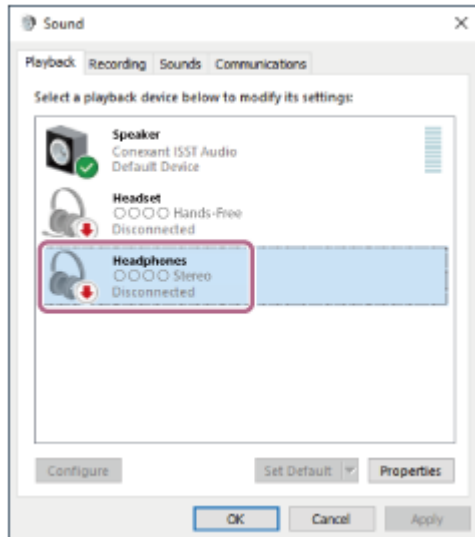
### 3 Select the headset using the computer.

- Right-click the volume icon on the windows toolbar, then click [Playback devices].

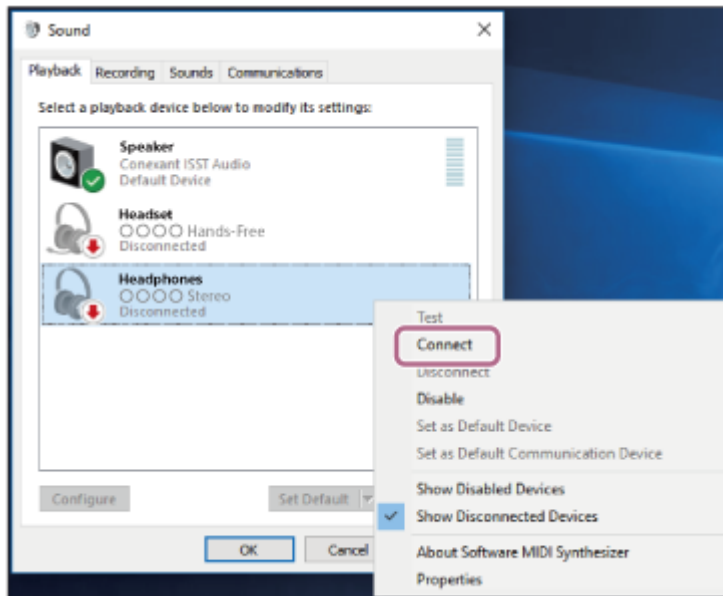


2. Right-click [WI-C200] or [WI-C310].

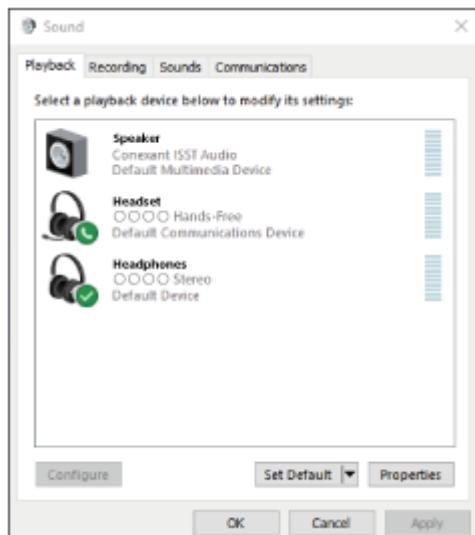
If [WI-C200] or [WI-C310]] is not displayed on the [Sound] screen, right-click on the [Sound] screen, then select [Show Disconnected Devices].



3. Select [Connect] from the displayed menu.



The connection is established. You will hear a voice guidance "Bluetooth connected".



### Hint

- The above procedure is an example. For more details, refer to the operating instructions supplied with the computer.

### Note

- If the music playback sound quality is poor, check that the A2DP function which supports music playback connections is enabled in the computer settings. For more details, refer to the operating instructions supplied with the computer.
- If the last-connected Bluetooth device is placed near the headset, the headset may connect automatically to the device by simply turning on the headset. In that case, deactivate the Bluetooth function on the device or turn off the power.
- If you cannot connect your computer to the headset, delete the headset pairing information on your computer and perform the pairing again. As for the operations on your computer, refer to the operating instructions supplied with the computer.

---

### Related Topic

- [How to make a wireless connection to Bluetooth devices](#)
- [Pairing and connecting with a computer \(Windows 10\)](#)
- [Listening to music from a device via Bluetooth connection](#)
- [Disconnecting Bluetooth connection \(after use\)](#)


## Connecting to a paired computer (Windows 8.1)

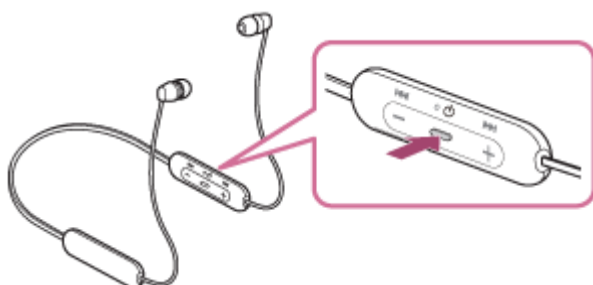
Before starting the operation, make sure of the following:

- Depending on the computer you are using, the built-in Bluetooth adaptor may need to be turned on. If you do not know how to turn on the Bluetooth adaptor or are unsure if your computer has a built-in Bluetooth adaptor, refer to the operating instructions supplied with the computer.

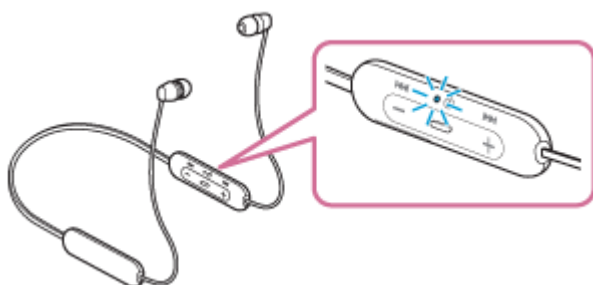
### 1 Wake the computer up from sleep mode.

### 2 Turn on the headset.

Press and hold the  button for about 2 seconds.



Check that the indicator (blue) continues to flash after you release your finger from the button. You will hear the voice guidance "Power on".

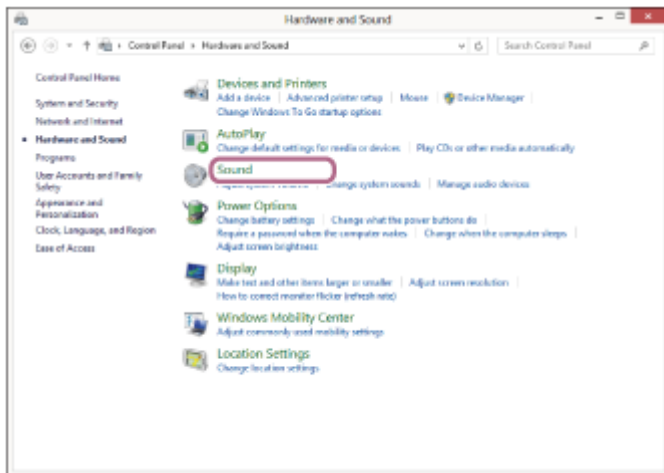
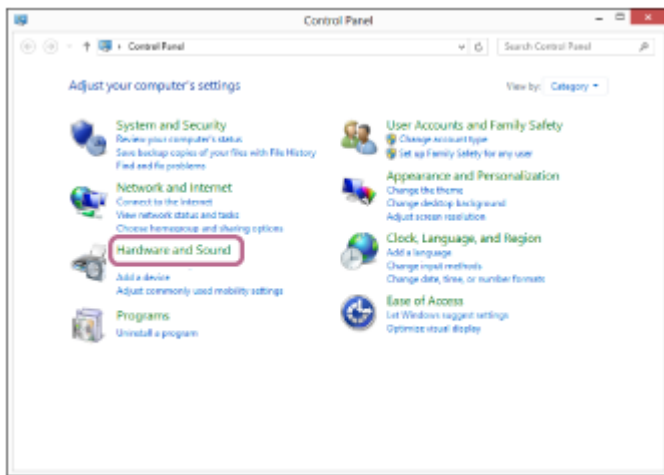


After the headset turns on, if it has automatically connected to the last connected device, you will hear a voice guidance "Bluetooth connected".

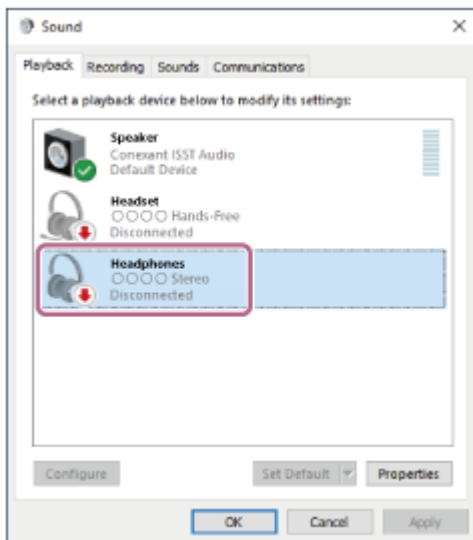
Check the connection status on the computer, and if it is not established, proceed to step 3.

### 3 Select the headset using the computer.

1. Select [Desktop] on the Start screen.
2. Right-click the [Start] button, then select [Control Panel] from the pop-up menu.
3. Select [Hardware and Sound], then [Sound].

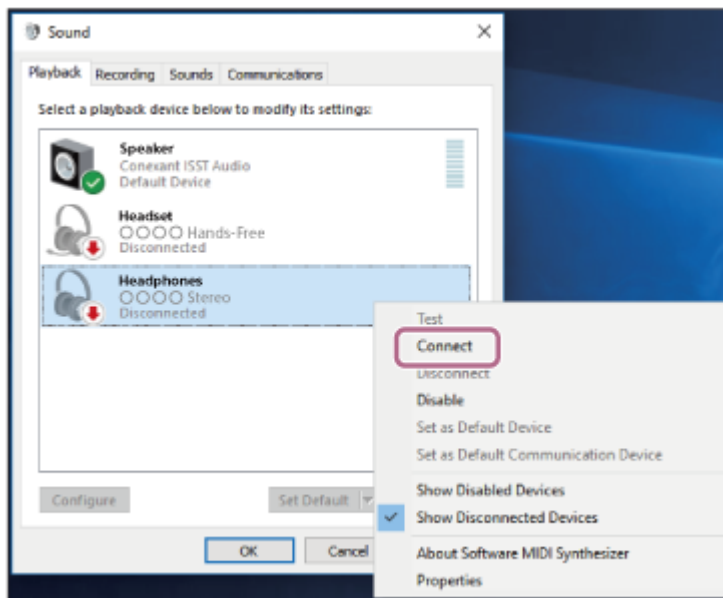


4. Right-click [WI-C200] or [WI-C310].  
If [WI-C200] or [WI-C310] is not displayed on the [Sound] screen, right-click on the [Sound] screen, then select [Show Disconnected Devices].

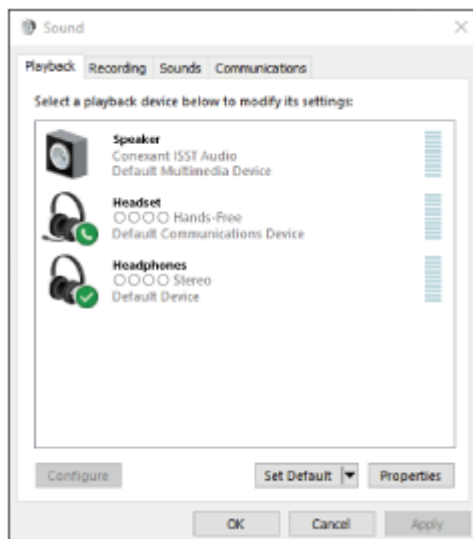


5. Select [Connect] from the displayed menu.





The connection is established. You will hear a voice guidance “Bluetooth connected”.



### Hint

- The above procedure is an example. For more details, refer to the operating instructions supplied with the computer.

### Note

- If the music playback sound quality is poor, check that the A2DP function which supports music playback connections is enabled in the computer settings. For more details, refer to the operating instructions supplied with the computer.
- If the last-connected Bluetooth device is placed near the headset, the headset may connect automatically to the device by simply turning on the headset. In that case, deactivate the Bluetooth function on the device or turn off the power.
- If you cannot connect your computer to the headset, delete the headset pairing information on your computer and perform the pairing again. As for the operations on your computer, refer to the operating instructions supplied with the computer.

### Related Topic

- [How to make a wireless connection to Bluetooth devices](#)
- [Pairing and connecting with a computer \(Windows 8.1\)](#)
- [Listening to music from a device via Bluetooth connection](#)

- [Disconnecting Bluetooth connection \(after use\)](#)

5-004-549-11(1) Copyright 2019 Sony Corporation


## Connecting to a paired computer (Windows 7)

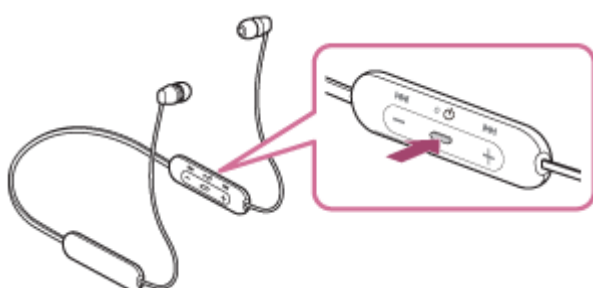
Before starting the operation, make sure of the following:

- Depending on the computer you are using, the built-in Bluetooth adaptor may need to be turned on. If you do not know how to turn on the Bluetooth adaptor or are unsure if your computer has a built-in Bluetooth adaptor, refer to the operating instructions supplied with the computer.

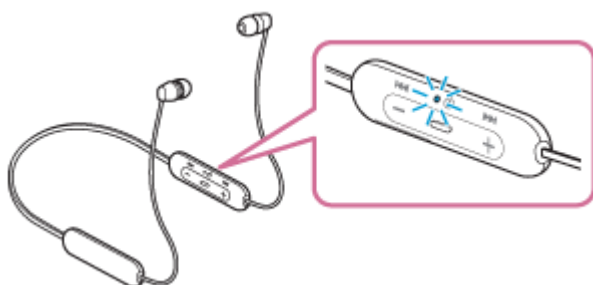
### 1 Wake the computer up from sleep mode.

### 2 Turn on the headset.

Press and hold the  button for about 2 seconds.



Check that the indicator (blue) continues to flash after you release your finger from the button. You will hear the voice guidance "Power on".

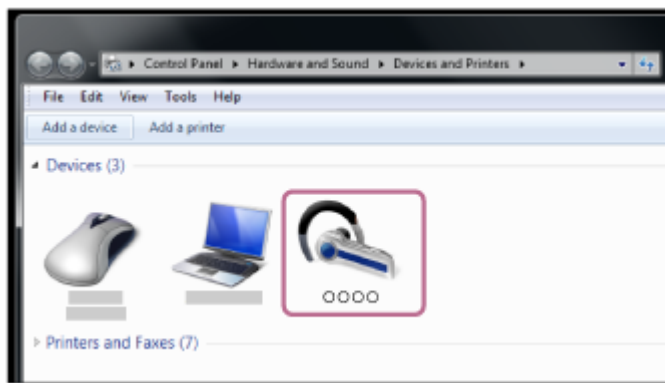


After the headset turns on, if it has automatically connected to the last connected device, you will hear a voice guidance "Bluetooth connected".

Check the connection status on the computer, and if it is not established, proceed to step 3.

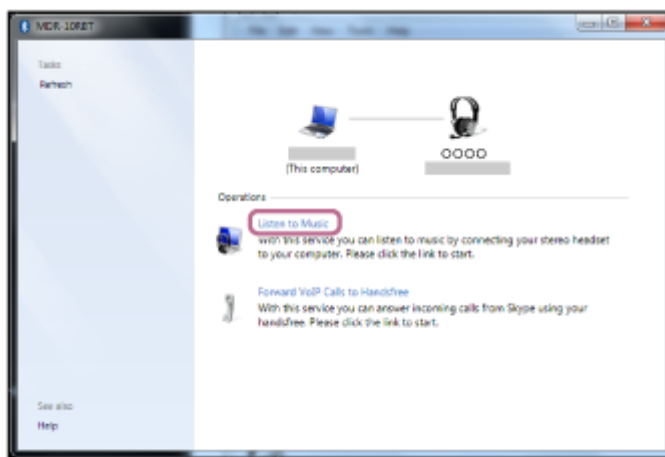
### 3 Select the headset using the computer.

1. Click the [Start] button, then [Devices and Printers].
2. Double-click [WI-C200] or [WI-C310] of [Devices].



You will hear a voice guidance “Bluetooth connected”.

3. Click [Listen to Music].



## Hint

- The above procedure is an example. For more details, refer to the operating instructions supplied with the computer.

## Note

- If the music playback sound quality is poor, check that the A2DP function which supports music playback connections is enabled in the computer settings. For more details, refer to the operating instructions supplied with the computer.
- If the last-connected Bluetooth device is placed near the headset, the headset may connect automatically to the device by simply turning on the headset. In that case, deactivate the Bluetooth function on the device or turn off the power.
- If you cannot connect your computer to the headset, delete the headset pairing information on your computer and perform the pairing again. As for the operations on your computer, refer to the operating instructions supplied with the computer.

## Related Topic


- [How to make a wireless connection to Bluetooth devices](#)
- [Pairing and connecting with a computer \(Windows 7\)](#)
- [Listening to music from a device via Bluetooth connection](#)
- [Disconnecting Bluetooth connection \(after use\)](#)

## Connecting to a paired computer (Mac)

### Compatible OS

macOS (version 10.10 or later)

Before starting the operation, make sure of the following:

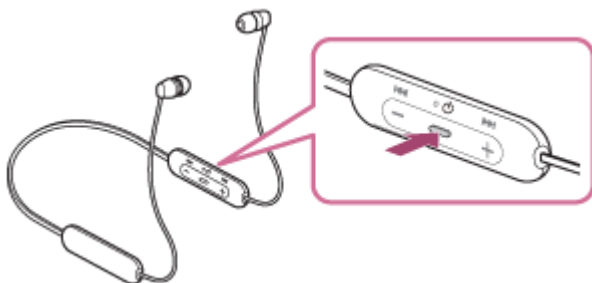
- Depending on the computer you are using, the built-in Bluetooth adaptor may need to be turned on. If you do not know how to turn on the Bluetooth adaptor or are unsure if your computer has a built-in Bluetooth adaptor, refer to the operating instructions supplied with the computer.
- Set the computer speaker to the ON mode.  
If the computer speaker is set to the  "OFF" mode, no sound is heard from the headset.  
Computer speaker in the ON mode



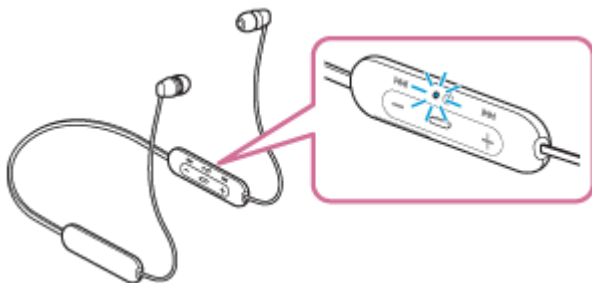
**1 Wake the computer up from sleep mode.**

**2 Turn on the headset.**

Press and hold the  button for about 2 seconds.




Check that the indicator (blue) continues to flash after you release your finger from the button. You will hear the voice guidance "Power on".



After the headset turns on, if it has automatically connected to the last connected device, you will hear a voice guidance "Bluetooth connected".

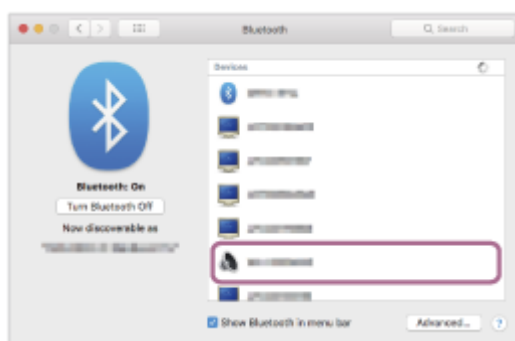
Check the connection status on the computer, and if it is not established, proceed to step 3.

**3 Select the headset using the computer.**

1. Select [  (System Preferences) ] - [Bluetooth] from the task bar in the lower right part of the screen.

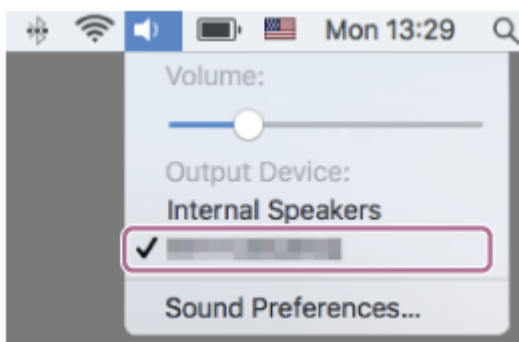


2. Click [WI-C200] or [WI-C310] on the Bluetooth screen while pressing the computer Control button and select [Connect] from the pop up menu.



4. Click the speaker icon in the upper right part of the screen and select [WI-C200] or [WI-C310].

You will hear a voice guidance “Bluetooth connected”.  
Now you are ready to enjoy music playback on your computer.



#### Hint

- The above procedure is an example. For more details, refer to the operating instructions supplied with the computer.

#### Note

- If the music playback sound quality is poor, check that the A2DP function which supports music playback connections is enabled in the computer settings. For more details, refer to the operating instructions supplied with the computer.
- If the last-connected Bluetooth device is placed near the headset, the headset may connect automatically to the device by simply turning on the headset. In that case, deactivate the Bluetooth function on the device or turn off the power.

- If you cannot connect your computer to the headset, delete the headset pairing information on your computer and perform the pairing again. As for the operations on your computer, refer to the operating instructions supplied with the computer.

---

### Related Topic

- [How to make a wireless connection to Bluetooth devices](#)
- [Pairing and connecting with a computer \(Mac\)](#)
- [Listening to music from a device via Bluetooth connection](#)
- [Disconnecting Bluetooth connection \(after use\)](#)

5-004-549-11(1) Copyright 2019 Sony Corporation

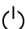
## Pairing and connecting with other Bluetooth devices

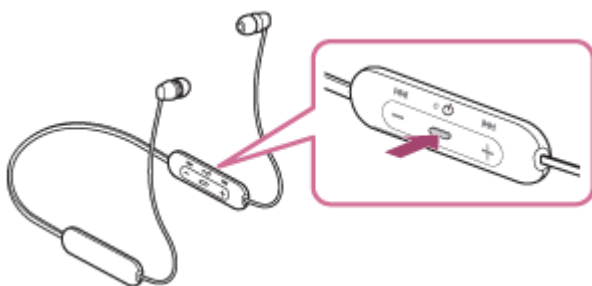
The operation to register the device that you wish to connect to is called “pairing”. First, pair a device to use it with the headset for the first time.

Before you start the pairing operation, make sure that:

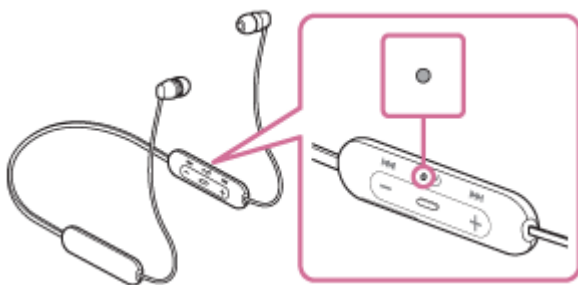
- The Bluetooth device is placed within 1 m (3 feet) of the headset.
- The headset is charged sufficiently.
- The operating instructions of the Bluetooth device is in hand.

### 1 Enter pairing mode on this headset.

Turn on the headset when you pair the headset with a device for the first time after you bought it or after you initialized the headset (the headset has no pairing information). The headset enters pairing mode automatically. When you pair a second or subsequent device (the headset has pairing information for other devices), press and hold the  button for about 7 seconds.



Check that the indicator (blue) repeatedly flashes twice in a row. You will hear a voice guidance “Bluetooth pairing”.



### 2 Perform the pairing procedure on the Bluetooth device to search for this headset.

[WI-C200] or [WI-C310] will be displayed on the list of detected devices on the screen of the Bluetooth device. If it is not displayed, repeat from step 1.

### 3 Select [WI-C200] or [WI-C310] displayed on the screen of the Bluetooth device for pairing.

If Passkey (\*) input is required, input “0000”.

\* A Passkey may be called “Passcode”, “PIN code”, or “Password”.

### 4 Make the Bluetooth connection from the Bluetooth device.

Some devices automatically connect with the headset when the pairing is complete. You will hear a voice guidance “Bluetooth connected”.



## Hint

- The above procedure is an example. For more details, refer to the operating instructions supplied with the Bluetooth device.
- To delete all Bluetooth pairing information, see [“Initializing the headset to restore factory settings”](#).

## Note

- If pairing is not established within 5 minutes, pairing mode is canceled, and the headset turns off. In this case, start the operation over from step 1.
- Once Bluetooth devices are paired, there is no need to pair them again, except in the following cases:
  - Pairing information has been deleted after repair, etc.
  - When a 9th device is paired.  
The headset can be paired with up to 8 devices. If a new device is paired after 8 devices are already paired, the registration information of the paired device with the oldest connection date is overwritten with the information for the new device.
  - When the pairing information for the headset has been deleted from the Bluetooth device.
  - When the headset is initialized.  
All of the pairing information is deleted. In this case, delete the pairing information for the headset from the device and then pair them again.
- The headset can be paired with multiple devices, but can only play music from 1 paired device at a time.

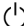
---

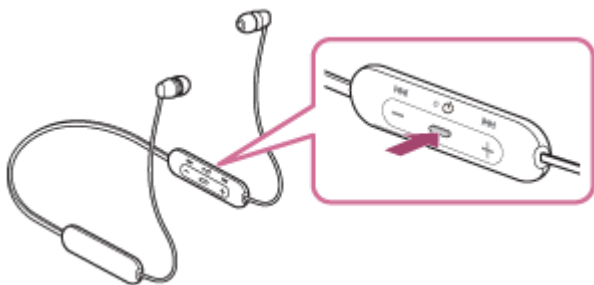
## Related Topic

- [How to make a wireless connection to Bluetooth devices](#)
- [Connecting to a paired Bluetooth device](#)
- [Listening to music from a device via Bluetooth connection](#)
- [Disconnecting Bluetooth connection \(after use\)](#)
- [Initializing the headset to restore factory settings](#)

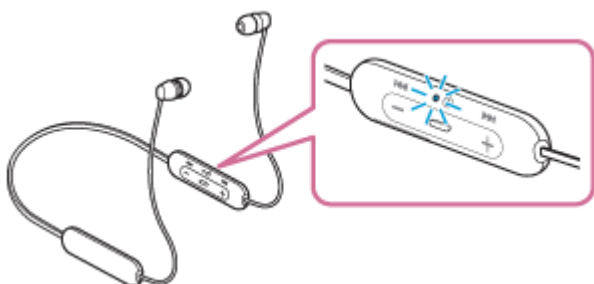
## Connecting to a paired Bluetooth device

### 1 Turn on the headset.

Press and hold the  button for about 2 seconds.



Check that the indicator (blue) continues to flash after you release your finger from the button. You will hear the voice guidance “Power on”.



After the headset turns on, if it has automatically connected to the last connected device, you will hear a voice guidance “Bluetooth connected”.

Check the connection status on the Bluetooth device. If it is not connected, proceed to step 2.

### 2 Make the Bluetooth connection from the Bluetooth device.

Refer to the operations in the operating instructions supplied with Bluetooth device. When connected, you will hear a voice guidance “Bluetooth connected”.

#### Hint

- The above procedure is an example. For more details, refer to the operating instructions supplied with the Bluetooth device.

#### Note

- If the last-connected Bluetooth device is placed near the headset, the headset may connect automatically to the device by simply turning on the headset. In that case, deactivate the Bluetooth function on the device or turn off the power.
- If you cannot connect your Bluetooth device to the headset, delete the headset pairing information on your Bluetooth device and perform the pairing again. As for the operations on your Bluetooth device, refer to the operating instructions supplied with the device.

- [How to make a wireless connection to Bluetooth devices](#)
- [Pairing and connecting with other Bluetooth devices](#)
- [Listening to music from a device via Bluetooth connection](#)
- [Disconnecting Bluetooth connection \(after use\)](#)

5-004-549-11(1) Copyright 2019 Sony Corporation

## Connecting the headset to both a music player and a smartphone / mobile phone (multipoint connection)

Multipoint is a function which allows you to connect 2 Bluetooth devices to the headset and use one device for music playback (A2DP connection) and the other for talking (HFP/HSP connection).

When you wish to use a music player only for music playback and a smartphone only for talking, use a multipoint connection to the headset for each device. The connecting devices must support the Bluetooth function.

**1 Pair the headset with both the music player and the smartphone/mobile phone.**

**2 Connect the headset with the music player.**

Operate the music player to establish a Bluetooth connection with the headset.

**3 Connect the headset to a smartphone or mobile phone.**

Operate the smartphone/mobile phone to establish a Bluetooth connection with the headset.

**Note**

- If the smartphone or mobile phone was connected with the headset the last time, an HFP or HSP connection is automatically established when the headset is turned on, and in some cases an A2DP connection is simultaneously established. In that case, connect from step 2 after disconnecting via smartphone/mobile phone operations.

## Connecting the headset to 2 Android smartphones (multipoint connection)

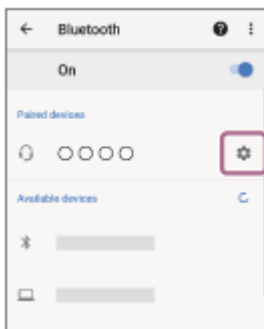
Usually, when you connect the headset to a smartphone, both the music playback function and the phone call function are connected simultaneously.

To make a multipoint connection using 2 smartphones for separately listening to music and making phone calls, set up to connect to only one function by operating the smartphone.

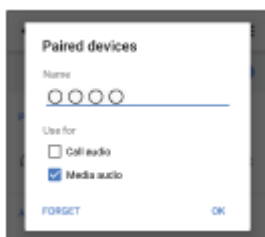
- 1 **Pair the headset with both smartphones, respectively.**
- 2 **Use one of the smartphones to establish a Bluetooth connection with the headset.**
- 3 **On the smartphone connected to the headset, uncheck either [Call audio] (HFP) or [Media audio] (A2DP).**

### Operation example: For connecting only through media audio (A2DP)

Touch [Settings] - [Device connection] - [Bluetooth] - the setting icon next to [WI-C200] or [WI-C310].



On the [Paired devices] screen, uncheck [Call audio].



- 4 **Use the smartphone to terminate the Bluetooth connection.**
- 5 **Use the other smartphone to establish a Bluetooth connection to the headset.**
- 6 **In the same way, uncheck the function that you did not uncheck in step 3.**
- 7 **Use the first smartphone to establish a Bluetooth connection again.**

Both smartphones are connected to the headset with only one function enabled.

- The above procedure is an example. For more details, refer to the operating instructions supplied with the Android smartphone.

### Note

- When using multipoint connection, the remaining battery charge of the headset will not be correctly displayed on the screen of the device that is connected with “Media audio” (A2DP).

---

---

### Related Topic

- [Checking the remaining battery charge](#)

5-004-549-11(1) Copyright 2019 Sony Corporation

## Connecting the headset to an Android smartphone and an iPhone (multipoint connection)

Usually when you connect the headset to a smartphone, the music playback function and the phone call function are both connected simultaneously.

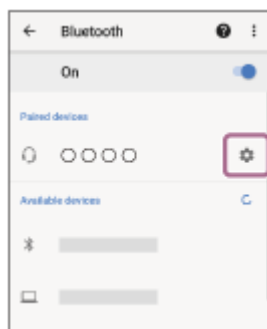
To make a multipoint connection using an Android smartphone and iPhone for separately listening to music and making phone calls, change the settings on the Android smartphone so that only one of the functions is connected. Connect the Android smartphone before connecting the iPhone.

You cannot set the iPhone to connect one function only.

- 1 **Pair the headset with both Android smartphone and iPhone, respectively.**
- 2 **Use the Android smartphone to establish a Bluetooth connection with the headset.**
- 3 **On the smartphone connected to the headset, uncheck either [Call audio] (HFP) or [Media audio] (A2DP).**

**Operation example: For connecting only through media audio (A2DP)**

Touch [Settings] - [Device connection] - [Bluetooth] - the setting icon next to [WI-C200] or [WI-C310].



On the [Paired devices] screen, uncheck [Call audio].



- 4 **Use the iPhone to establish a Bluetooth connection to the headset.**

The iPhone is connected with the function unchecked in step 3.

### Hint

- The above procedure is an example. For more details, refer to the operating instructions supplied with the Android smartphone.

### Note

- When using multipoint connection, the remaining battery charge of the headset will not be correctly displayed on the screen of the device that is connected with "Media audio" (A2DP).

---

### Related Topic

- [Checking the remaining battery charge](#)

5-004-549-11(1) Copyright 2019 Sony Corporation



Wireless Stereo Headset  
WI-C200 / WI-C310

## Disconnecting Bluetooth connection (after use)

---

**1 Disconnect the Bluetooth device by operating the device.**

When disconnected, you will hear a voice guidance "Bluetooth disconnected".

**2 Turn off the headset.**

You will hear a voice guidance "Power off".

### Hint

- When you finish playing music, the Bluetooth connection may terminate automatically depending on the Bluetooth device.

---

### Related Topic

- [Turning off the headset](#)

## Listening to music from a device via Bluetooth connection

If your Bluetooth device supports the following profiles, you can enjoy listening to music and perform basic remote control operation of the Bluetooth device via a Bluetooth connection.

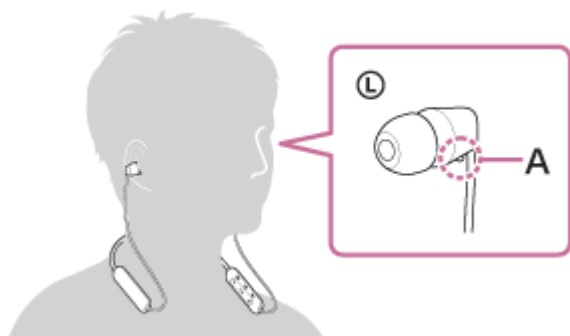
- A2DP (Advanced Audio Distribution Profile)  
You can enjoy high-quality music wirelessly.
- AVRCP (Audio Video Remote Control Profile)  
You can adjust the volume, etc.

The operation may vary depending on the Bluetooth device. Refer to the operating instructions supplied with the Bluetooth device.

### 1 Connect the headset to a Bluetooth device.

### 2 Wear the headset.

Put the headset with the **Ⓐ** (left) mark on your left ear and the **Ⓑ** (right) mark on your right ear. The **Ⓐ** (left) unit has a tactile dot.



**A:** Tactile dot

Adjust the headset position to fit your ears.

### 3 Operate the Bluetooth device to start playback and adjust the volume to a moderate level.

### 4 Adjust the volume by pressing the +/- buttons of the headset.

When the volume reaches the maximum or minimum, an alarm sounds.

#### Hint

- The headset supports SCMS-T content protection. You can enjoy music and other audio on the headset from a device such as a mobile phone or portable TV that supports SCMS-T content protection.
- Depending on the Bluetooth device, it may be necessary to adjust the volume or set the audio output setting on the Bluetooth device.
- The headset volume during a call and during music playback can be independently adjusted. Changing the call volume does not change the volume of music playback and vice versa.

### Note

- If the communication condition is poor, the Bluetooth device may react incorrectly to the operation on the headset.

---

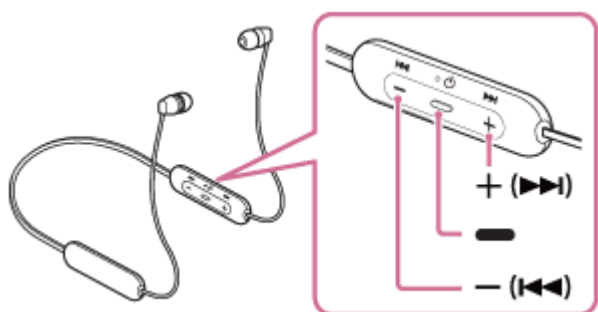
### Related Topic

- [How to make a wireless connection to Bluetooth devices](#)
- [Controlling the audio device \(Bluetooth connection\)](#)

5-004-549-11(1) Copyright 2019 Sony Corporation

## Controlling the audio device (Bluetooth connection)

If your Bluetooth device supports the device operating function (compatible protocol: AVRCP), then the following operations are available. The available functions may vary depending on the Bluetooth device, so refer to the operating instructions supplied with the device.



Each button has the following function:

■ (play)

- Press once during pause to start playback.
- Press once during playback to pause.

- (⏮)/+ (⏭)

- Adjust the volume.
- Press and hold until you hear a beep to skip to the beginning of the previous track (or the current track during playback)/beginning of the next track. After releasing the button, press it repeatedly within 1 second to hear a beep and skip to the beginning of the previous/next track.

### Note

- If the communication condition is poor, the Bluetooth device may react incorrectly to the operation on the headset.
- The available functions may vary depending on the connected device. In some cases, it may operate differently or may not work at all when the operations described above are performed.

Wireless Stereo Headset  
WI-C200 / WI-C310

## Disconnecting Bluetooth connection (after use)

---

**1 Disconnect the Bluetooth device by operating the device.**

When disconnected, you will hear a voice guidance "Bluetooth disconnected".

**2 Turn off the headset.**

You will hear a voice guidance "Power off".

### Hint

- When you finish playing music, the Bluetooth connection may terminate automatically depending on the Bluetooth device.

---

### Related Topic

- [Turning off the headset](#)

Wireless Stereo Headset  
WI-C200 / WI-C310

## Supported codecs

---

A codec is an audio coding algorithm used when transmitting sound via a Bluetooth connection.

The headset supports the following 2 codecs for music playback via an A2DP connection: SBC and AAC.

- SBC

This is an abbreviation for Subband Codec.

This is the standard audio coding technology used by Bluetooth devices.

All Bluetooth devices support SBC.

- AAC

This is an abbreviation for Advanced Audio Coding.

AAC is mainly used by Apple products such as iPhone, and it provides higher sound quality than that of SBC.

## Receiving a call

You can enjoy a hands-free call with a smartphone or mobile phone that supports the Bluetooth profile HFP (Hands-free Profile) or HSP (Headset Profile), via a Bluetooth connection.

- If your smartphone or mobile phone supports both HFP and HSP, set it to HFP.
- The operation may vary depending on the smartphone or mobile phone. Refer to the operating instructions supplied with the smartphone or mobile phone.
- Only ordinary phone calls are supported. Applications for phone calls on smartphones or personal computers are not supported.

## Ring tone

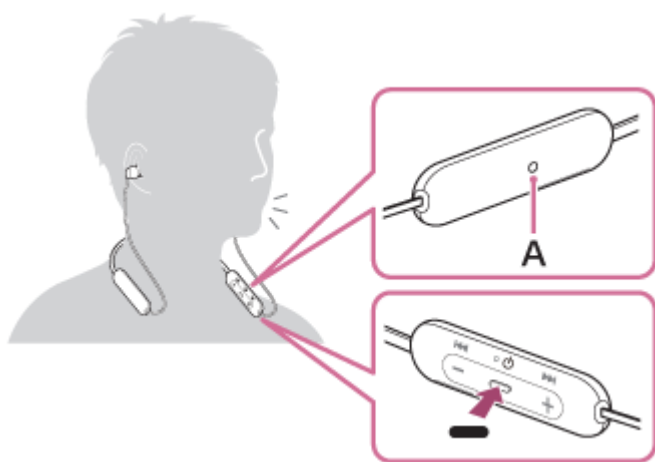
When an incoming call arrives, a ring tone will be heard from the headset, and the indicator (blue) flashes quickly. You will hear either of following ring tones, depending on your smartphone or mobile phone.

- Ring tone set on the headset
- Ring tone set on the smartphone or mobile phone
- Ring tone set on the smartphone or mobile phone only for a Bluetooth connection

### 1 Connect the headset to a smartphone or mobile phone beforehand.

### 2 When you hear a ring tone, press the **—** (call) button on the headset and receive the call.

When an incoming call arrives while you are listening to music, playback pauses and a ring tone will be heard from the headset.



A: Microphone

### If no ring tone is heard via the headset

- The headset may not be connected with the smartphone or mobile phone over HFP or HSP. Check the connection status on the smartphone or mobile phone.
- If playback does not pause automatically, operate the headset to pause playback.

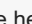
### 3 Press the **+** or **-** button to adjust the volume.

When the volume reaches the maximum or minimum, an alarm sounds.

#### 4 To end the call, press the (call) button on the headset again.

If you received a call during music playback, music playback resumes automatically after ending the call.

##### Hint

- Some smartphones or mobile phones receive calls with the phone instead of the headset by default. With an HFP or HSP connection, switch the call to the headset by pressing and holding the  (call) button for about 2 seconds or by using your smartphone or mobile phone.
- Volume for a call can be adjusted during a telephone conversation only.
- The headset volume during a call and during music playback can be independently adjusted. Changing the call volume does not change the volume of music playback and vice versa.

##### Note

- Depending on the smartphone or mobile phone, when an incoming call arrives while you are listening to music, playback may not resume automatically even if you finish the call.
- Use a smartphone or mobile phone at least 50 cm (19.69 in.) away from the headset. Noise may result if the smartphone or mobile phone are too close to the headset.
- Your voice is heard from the headset through the headset's microphone (Sidetone function). In this case, ambient sounds or the sounds of the headset operation may be heard through the headset, but this is not a malfunction.

---

##### Related Topic

- [How to make a wireless connection to Bluetooth devices](#)
- [Making a call](#)
- [Functions for a phone call](#)



## Making a call

You can enjoy a hands-free call with a smartphone or mobile phone that supports the Bluetooth profile HFP (Hands-free Profile) or HSP (Headset Profile), via a Bluetooth connection.

- If your smartphone or mobile phone supports both HFP and HSP, set it to HFP.
- The operation may vary depending on the smartphone or mobile phone. Refer to the operating instructions supplied with the smartphone or mobile phone.
- Only ordinary phone calls are supported. Applications for phone calls on smartphones or personal computers are not supported.

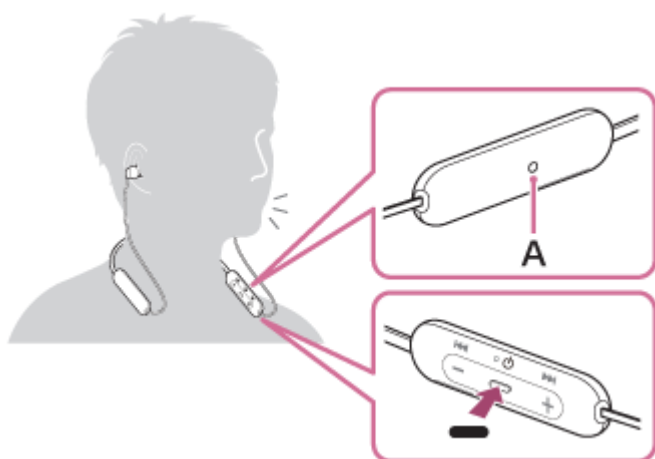
### 1 Connect the headset to a smartphone or mobile phone beforehand.

### 2 Operate your smartphone or mobile phone to make a call.

When you make a call, the dial tone is heard from the headset.

If you make a call while you are listening to music, playback pauses.

If no dial tone is heard via the headset, switch the call device to the headset using your smartphone or mobile phone or by pressing and holding the **■** (call) button down for about 2 seconds.



A: Microphone

### 3 Press the + or - button to adjust the volume.

When the volume reaches the maximum or minimum, an alarm sounds.

### 4 To end the call, press the **■** (call) button on the headset again.

If you made a call during music playback, music playback resumes automatically after ending the call.

#### Hint

- Volume for a call can be adjusted during a telephone conversation only.
- The headset volume during a call and during music playback can be independently adjusted. Changing the call volume does not change the volume of music playback and vice versa.

### Note

- Use a smartphone or mobile phone at least 50 cm (19.69 in.) away from the headset. Noise may result if the smartphone or mobile phone is too close to the headset.
- Your voice is heard from the headset through the headset's microphone (Sidetone function). In this case, ambient sounds or the sounds of the headset operation may be heard through the headset, but this is not a malfunction.

---

### Related Topic

- [How to make a wireless connection to Bluetooth devices](#)
- [Receiving a call](#)
- [Functions for a phone call](#)

5-004-549-11(1) Copyright 2019 Sony Corporation

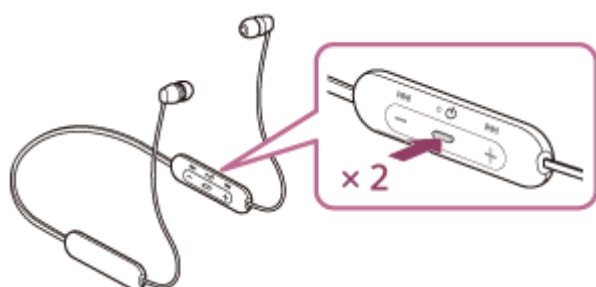
## Functions for a phone call

The functions available during a call may vary depending on the profile supported by your smartphone or mobile phone. In addition, even if the profile is the same, the functions may vary depending on the smartphone or mobile phone. Refer to the operating instructions supplied with the smartphone or mobile phone.

### Supported profile: HFP (Hands-free Profile)

#### During standby/music playback

- Press the **■** (call) button twice in 0.5 seconds to start the voice dial function of the smartphone/mobile phone (\*), or activate the Google app of the Android smartphone or Siri of the iPhone.



#### Outgoing call

- Press the **■** (call) button once to cancel an outgoing call.
- Press and hold the **■** (call) button for about 2 seconds to change the call device between the headset and the smartphone or mobile phone.

#### Incoming call

- Press the **■** (call) button once to answer a call.
- Press and hold the **■** (call) button for about 2 seconds to reject a call.

#### During call

- Press the **■** (call) button once to finish a call.
- Press and hold the **■** (call) button for about 2 seconds to change the call device between the headset and the smartphone or mobile phone.

### Supported profile: HSP (Headset Profile)

#### Outgoing call

- Press the **■** (call) button once to cancel an outgoing call. (\*)

#### Incoming call

- Press the **■** (call) button once to answer a call.

#### During call

- Press the **■** (call) button once to finish a call. (\*)

\* Some devices may not support this function.

---

#### Related Topic

- [Receiving a call](#)



Wireless Stereo Headset  
WI-C200 / WI-C310

## Disconnecting Bluetooth connection (after use)

---

**1 Disconnect the Bluetooth device by operating the device.**

When disconnected, you will hear a voice guidance "Bluetooth disconnected".

**2 Turn off the headset.**

You will hear a voice guidance "Power off".

### Hint

- When you finish playing music, the Bluetooth connection may terminate automatically depending on the Bluetooth device.

---

### Related Topic

- [Turning off the headset](#)

## Using the voice assist function (Google app)

By using the Google app feature that comes with the Android smartphone, you can speak to the headset's microphone to operate the Android smartphone.

### 1 Set the assist and voice input selection to the Google app.

On the Android smartphone, select [Settings] - [Apps & notifications] - [Advanced] - [Default apps] - [Assist & voice input], and set [Assist app] to the Google app.

The above procedure is an example. For details, refer to the operating instructions of the Android smartphone.

Note: The latest version of the Google app may be required.

For details on the Google app, refer to the operating instructions or the support website of the Android smartphone, or the Google Play store website.

The Google app may not be activated from the headset depending on specifications of the Android smartphone.

### 2 Connect the headset to the Android smartphone via Bluetooth connection.

### 3 When the Android smartphone is in standby or playing music, press the (play/call) button twice in 0.5 seconds to activate the Google app.

The Google app is activated.

### 4 Make a request to the Google app through the headset's microphone.

For details on the apps which work with the Google app, refer to the operating instructions of the Android smartphone.

After activating the Google app, the voice command is canceled when a certain time has passed without requests.

#### Note

- The Google app cannot be activated when you say "Ok Google" even when the Android smartphone's "Ok Google" setting is on.
- Your voice is heard from the headset through the headset's microphone (Sidetone function). In this case, the surrounding sound or sound of the headset operation may be heard through the headset — this is not a malfunction.
- The Google app may not be activated depending on specifications of the smartphone or application version.
- The Google app does not work when connected to a device not compatible with the voice assist function.

## Using the voice assist function (Siri)

By using the Siri feature that comes with iPhone, you can speak to the headset's microphone to operate the iPhone.

### 1 Turn Siri on.

On iPhone, select [Settings] - [Siri & Search] to turn [Press Home for Siri] and [Allow Siri When Locked] on. The operation above is an example. For details, refer to the operating instructions of the iPhone.

Note: For details on Siri, refer to the operating instructions or support website of the iPhone.

### 2 Connect the headset to the iPhone via Bluetooth connection.

### 3 When the iPhone is using the Bluetooth connection and in standby or playing music, press the (play/call) button twice in 0.5 seconds.

Siri is activated.

### 4 Make a request to Siri through the headset's microphone.

For details on the apps which work with Siri, refer to the operating instructions of the iPhone.

### 5 To continue to request, press the (play/call) button before Siri is deactivated.

After activating Siri, when a certain time has passed without requests, Siri will be deactivated.

#### Note

- Siri cannot be activated when you say "Hey Siri" even when the iPhone's "Hey Siri" setting is on.
- Your voice is heard from the headset through the headset's microphone (Sidetone function). In this case, the surrounding sound or sound of the headset operation may be heard through the headset — this is not a malfunction.
- Siri may not be activated depending on specifications of the smartphone or application version.
- Siri does not work when connected to a device not compatible with the voice assist function.

## Precautions

---

### On Bluetooth communications

- Bluetooth wireless technology operates within a range of about 10 m (30 feet). The maximum communication distance may vary depending on the presence of obstacles (people, metal objects, walls, etc.) or the electromagnetic environment.
- Microwaves emitting from a Bluetooth device may affect the operation of electronic medical devices. Turn off this unit and other Bluetooth devices in the following locations, as it may cause an accident:
  - in hospitals, near priority seating in trains, locations where inflammable gas is present, near automatic doors, or near fire alarms.
- This product emits radio waves when used in wireless mode. When used in wireless mode on an airplane, follow flight crew directions regarding permissible use of products in wireless mode.
- The audio playback on this unit may be delayed from that on the transmitting device, due to the characteristics of Bluetooth wireless technology. As a result, the sound may not be in sync with the image when viewing movies or playing games.
- The unit supports security functions that comply with the Bluetooth standard as a means of ensuring security during communication using Bluetooth wireless technology. However, depending on the configured settings and other factors, this security may not be sufficient. Be careful when communicating using Bluetooth wireless technology.
- Sony shall assume no responsibility for any damages or loss resulting from information leaks that occur when using Bluetooth communications.
- Connection with all Bluetooth devices cannot be guaranteed.
  - Bluetooth devices connected with the unit must comply with the Bluetooth standard prescribed by Bluetooth SIG, Inc., and must be certified as compliant.
  - Even when a connected device complies with the Bluetooth standard, there may be cases where the characteristics or specifications of the Bluetooth device make it unable to connect, or result in different control methods, display, or operation.
  - When using the unit to perform hands-free talking on the phone, noise may occur depending on the connected device or the communication environment.
- Depending on the device to be connected, it may require some time to start communications.

### Note on static electricity

- Static electricity accumulated in the body may cause mild tingling in your ears. To reduce the effect, wear clothes made from natural materials, which suppress the generation of static electricity.

### Notes on wearing the unit

- After use, remove the headphones slowly.
- Because the earbuds achieve a tight seal in the ears, forcibly pressing them in or quickly pulling them out can result in eardrum damage. When putting the earbuds into your ears, the speaker diaphragm may produce a click sound. This is not a malfunction.

### Other notes

- Do not subject the unit to excessive shock.
- The Bluetooth function may not work with a mobile phone, depending on the signal conditions and the surrounding environment.
- If you experience discomfort while using the unit, stop using it immediately.
- The earbuds may be damaged or deteriorate with long-term use and storage.
- If the earbuds become dirty, remove them from the unit and gently wash them by hand using a neutral detergent. After cleaning, thoroughly wipe off any moisture.



- The unit is not waterproof. If water or foreign objects enter the unit, it may result in fire or electric shock. If water or a foreign object enters the unit, stop use immediately and consult your nearest Sony dealer. In particular, be careful in the following cases.
  - When using the unit around a sink, etc.  
Be careful that the unit does not fall into a sink or container filled with water.
  - When using the unit in the rain or snow, or in humid locations
  - When using the unit while you are sweaty  
If you touch the unit with wet hands, or put the unit in the pocket of a damp article of clothing, the unit may get wet.

## **Cleaning the unit**

- When the outside of the unit is dirty, clean it by wiping with a soft dry cloth. If the unit is particularly dirty, soak a cloth in a dilute solution of neutral detergent, and wring it well before wiping. Do not use solvents such as thinner, benzene, or alcohol, as they may damage the surface.

5-004-549-11(1) Copyright 2019 Sony Corporation

## Trademarks

---

- Windows is a registered trademark or trademark of Microsoft Corporation in the United States and/or other countries.
- iPhone, iPod touch, macOS, Mac and Siri are trademarks of Apple Inc., registered in the U.S. and other countries.
- App Store is a service mark of Apple Inc., registered in the U.S. and other countries.
- iOS is a trademark or registered trademark of Cisco in the U.S. and other countries and is used under license.
- Google, Android and Google Play are trademarks of Google LLC.
- The Bluetooth® word mark and logos are registered trademarks owned by the Bluetooth SIG, Inc. and any use of such marks by Sony Corporation is under license.
- USB Type-C™ and USB-C™ are trademarks of USB Implementers Forum.

Other trademarks and trade names are those of their respective owners.

Wireless Stereo Headset  
WI-C200 / WI-C310

## Customer support websites

---

For customers in the U.S.A, Canada, and Latin America:

<https://www.sony.com/am/support>

For customers in European countries:

<https://www.sony.eu/support>

For customers in China:

<https://service.sony.com.cn>

For customers in other countries/regions:

<https://www.sony-asia.com/support>

## What can I do to solve a problem?

---

If the headset does not function as expected, try the following steps to resolve the issue.

- Find the symptoms of the issue in this Help Guide, and try any corrective actions listed.
- Charge the headset.  
You may be able to resolve some issues by charging the headset battery.
- Reset the headset.
- Initialize the headset.  
This operation resets volume settings, etc. to the factory settings, and deletes all pairing information.
- Look up information on the issue on the customer support website.

If the operations above do not work, consult your nearest Sony dealer.

---

### Related Topic

- [Charging the headset](#)
- [Customer support websites](#)
- [Resetting the headset](#)
- [Initializing the headset to restore factory settings](#)

Wireless Stereo Headset  
WI-C200 / WI-C310

## Unable to turn on the headset.

---

- Make sure the battery is fully charged.
  - The headset cannot be turned on while charging the battery. Remove the USB Type-C cable and turn on the headset.
- 
- 

### Related Topic

- [Charging the headset](#)
- [Checking the remaining battery charge](#)

Wireless Stereo Headset  
WI-C200 / WI-C310

## Charging cannot be done.

---

- Be sure to use the supplied USB Type-C cable.
  - Check that the USB Type-C cable is firmly connected to the headset and the USB AC adaptor or computer.
  - Make sure that the USB AC adaptor is firmly connected to the AC outlet.
  - Check that the computer is turned on.
  - Wake the computer up if the computer is in standby (sleep) or hibernation mode.
  - When using Windows 8.1, update using Windows Update.
- 

### Related Topic

- [Charging the headset](#)

Wireless Stereo Headset  
WI-C200 / WI-C310

## Charging time is too long.

---

- Check that the headset and the computer are directly connected, not via a USB hub.
  - Check that you are using the supplied USB Type-C cable.
- 

### Related Topic

- [Charging the headset](#)

5-004-549-11(1) Copyright 2019 Sony Corporation

Wireless Stereo Headset  
WI-C200 / WI-C310

## **The headset cannot be charged even if connecting the headset to a computer.**

---

- Check that the USB Type-C cable is properly connected to the USB port of the computer.
- Check that the headset and the computer are directly connected, not via a USB hub.
- There may be a problem with the USB port of the connected computer. Try connecting to another USB port on the computer if one is available.
- Try the USB connection procedure again in cases other than those stated above.

5-004-549-11(1) Copyright 2019 Sony Corporation



Wireless Stereo Headset  
WI-C200 / WI-C310

## **The remaining battery charge of the headset is not displayed on the screen of smartphone.**

- Only the iOS devices (including iPhone/iPod touch) which support HFP (Hands-free Profile), and Android smartphone (OS 8.1 or later) can display the remaining battery charge.
- Check that the smartphone is connected with HFP (Hands-free Profile). Otherwise, the remaining battery charge will not be correctly displayed.

---

### **Related Topic**

- [Checking the remaining battery charge](#)

Wireless Stereo Headset  
WI-C200 / WI-C310

## No sound

---

- Check that both the headset and the connected Bluetooth device (i.e., smartphone) are turned on.
  - Check that the headset and the transmitting Bluetooth device are connected via Bluetooth A2DP.
  - Turn up the volume if it is too low.
  - Check that the connected device is playing back.
  - If you are connecting a computer to the headset, make sure the audio output setting of the computer is set for a Bluetooth device.
  - Pair the headset and the Bluetooth device again.
- 

### Related Topic

- [How to make a wireless connection to Bluetooth devices](#)
- [Listening to music from a device via Bluetooth connection](#)

Wireless Stereo Headset  
WI-C200 / WI-C310

## Low sound level

---


- Turn up the volume of the headset and the connected device.
- Connect the Bluetooth device to the headset once again.

5-004-549-11(1) Copyright 2019 Sony Corporation

## Low sound quality

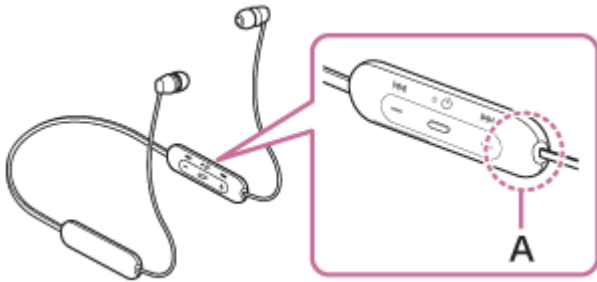
---

- Turn down the volume of the connected device if it is too loud.
- Keep the headset away from microwave ovens, Wi-Fi devices, etc.
- Bring the headset closer to the Bluetooth device. Remove any obstacles between the headset and the Bluetooth device.
- Keep the headset away from a TV.
- Switch the Bluetooth connection to A2DP by operating the Bluetooth device when HFP or HSP is set.
- If you connect a device with a built-in radio or tuner to the headset, broadcasts may not be received or the sensitivity may be reduced. Move the headset away from the connected device and try again.
- If the headset connects to the previously connected Bluetooth device, the headset may only establish the HFP/HSP Bluetooth connection when it is turned on. Use the Bluetooth device to connect via an A2DP Bluetooth connection.
- When listening to music from a computer on the headset, the sound quality may be poor (e.g., difficult to hear the singer's voice, etc.) for the first few seconds after a connection is established.

This is due to the computer specifications (priority on stable connection at the start of transmission and then switches to priority on sound quality several seconds later) and is not a headset malfunction. If the sound quality does not improve after a few seconds, press the  (play) button on the headset once during playback. Or you can use the computer to establish an A2DP connection. As for the operations on your Bluetooth device, refer to the operating instructions supplied with the device.

## Sound skips frequently.

- Remove any obstacles between the antenna of the connecting Bluetooth device and the built-in antenna of the headset. The antenna of the headset is built into the part shown in the dotted line below.




**A:** Location of the built-in antenna

- Bluetooth communications may be disabled, or noise or audio dropout may occur under the following conditions.
  - When there is a human body between the headset and the Bluetooth device  
Put the Bluetooth device in the same direction as the antenna of the headset to improve the Bluetooth communications.
  - There is an obstacle, such as metal or a wall, between the headset and the Bluetooth device.
  - In places with wireless LAN, where a microwave oven is used, electromagnetic waves are generated, etc.
- The situation may be improved by changing the wireless playback quality settings or fixing the wireless playback mode to SBC on the transmitting device. For details, refer to the operating instructions supplied with the transmitting device.
- Because Bluetooth devices and Wi-Fi (IEEE802.11b/g/n) use the same frequency band (2.4 GHz), microwave interference may occur and result in noise, audio dropouts, or communications being disabled if this headset is used near a Wi-Fi device. In such a case, perform the following steps.
  - Use this headset at least 10 m (30 feet) away from the Wi-Fi device.
  - If this headset is used within 10 m (30 feet) of a Wi-Fi device, turn off the Wi-Fi device.
  - Use this headset and the Bluetooth device as near to each other as possible.
- If you are enjoying music with your smartphone, the situation may be improved by shutting down unnecessary apps or restarting your smartphone.

## Pairing cannot be done.

---

- Bring the headset and the Bluetooth device within 1 m (3 feet) from each other.
  - The headset automatically enters pairing mode when pairing for the first time after purchasing, initializing, or repairing the headset. To pair a second or subsequent device, press and hold the  button of the headset for 7 seconds or more to enter pairing mode.
  - When pairing a device once again after initializing or repairing the headset, you may be unable to pair the device if it retains pairing information for the headset (iPhone or other device). In this case, delete the pairing information for the headset from the device and pair them again.
- 

### Related Topic

- [About the indicator](#)
- [How to make a wireless connection to Bluetooth devices](#)
- [Initializing the headset to restore factory settings](#)

## Unable to make a Bluetooth connection.

---

- Check that the headset is turned on.
  - Check that the Bluetooth device is turned on and the Bluetooth function is on.
  - If the headset automatically connects to the last connected Bluetooth device, you may fail to connect the headset to other devices via Bluetooth connection. In that case, operate the last connected Bluetooth device and disconnect the Bluetooth connection.
  - The Bluetooth device is in sleep mode. Cancel the sleep mode.
  - The Bluetooth connection is terminated. Make the Bluetooth connection again.
  - If the pairing information for the headset has been deleted on the Bluetooth device, pair the headset with the device again.
- 

### Related Topic

- [About the indicator](#)
- [How to make a wireless connection to Bluetooth devices](#)

Wireless Stereo Headset  
WI-C200 / WI-C310

## Distorted sound

---

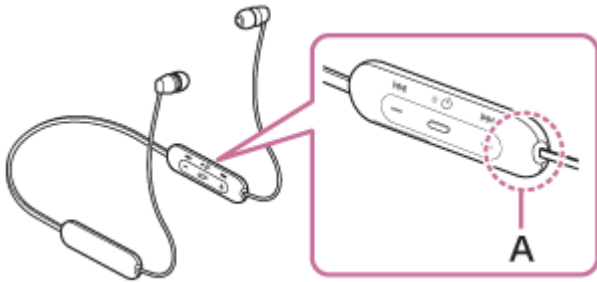
- Keep the headset away from a microwave oven, Wi-Fi device, etc.

5-004-549-11(1) Copyright 2019 Sony Corporation



## The Bluetooth wireless communication range is short, or the sound skips.

- Remove any obstacles between the antenna of the connecting Bluetooth device and the built-in antenna of the headset. The antenna of the headset is built into the part shown in the dotted line below.



**A:** Location of the built-in antenna

- Bluetooth communications may be disabled, or noise or audio dropout may occur under the following conditions.
  - When there is a human body between the headset and the Bluetooth device  
Put the Bluetooth device in the same direction as the antenna of the headset to improve the Bluetooth communications.
  - There is an obstacle, such as metal or a wall, between the headset and the Bluetooth device.
  - In places with wireless LAN, where a microwave oven is used, electromagnetic waves are generated, etc.
- The situation may be improved by changing the wireless playback quality settings or fixing the wireless playback mode to SBC on the transmitting device. For details, refer to the operating instructions supplied with the transmitting device.
- Because Bluetooth devices and Wi-Fi (IEEE802.11b/g/n) use the same frequency band (2.4 GHz), microwave interference may occur and result in noise, audio dropouts, or communications being disabled if this headset is used near a Wi-Fi device. In such a case, perform the following steps.
  - Use this headset at least 10 m (30 feet) away from the Wi-Fi device.
  - If this headset is used within 10 m (30 feet) of a Wi-Fi device, turn off the Wi-Fi device.
  - Use this headset and the Bluetooth device as near to each other as possible.
- If you are listening to music with your smartphone, the situation may be improved by shutting down unnecessary apps or restarting your smartphone.

Wireless Stereo Headset  
WI-C200 / WI-C310

## The headset does not operate properly.

---

- Reset the headset. This operation does not delete pairing information.
  - If the headset does not operate properly even if you reset the headset, initialize the headset.
- 

### Related Topic

- [Resetting the headset](#)
- [Initializing the headset to restore factory settings](#)

Wireless Stereo Headset  
WI-C200 / WI-C310

## Cannot hear a person on a call.

---

- Check that both the headset and the connected device (i.e., smartphone) are turned on.
- Turn up the volume of the connected device and the volume of the headset if they are too low.
- Check the audio settings of the Bluetooth device to make sure the sound is output to the headset during a call.
- Use the Bluetooth device to reestablish the connection. Select HFP or HSP for the profile.
- While listening to music with the headset, stop playback and press the **■** (call) button to respond to an incoming call.

---

### Related Topic

- [How to make a wireless connection to Bluetooth devices](#)
- [Receiving a call](#)
- [Making a call](#)

Wireless Stereo Headset  
WI-C200 / WI-C310

## Low voice from callers


---

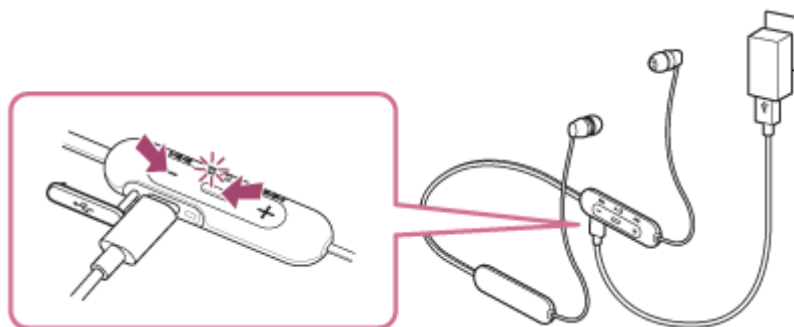
- Turn up the volume of the headset and the connected device.

5-004-549-11(1) Copyright 2019 Sony Corporation

Wireless Stereo Headset  
WI-C200 / WI-C310

## Resetting the headset

If the headset cannot be turned on or cannot be operated even when it is turned on, press the  button and - button simultaneously while charging. The headset will be reset. The device registration (pairing) information is not deleted. To charge the headset after resetting, disconnect and reconnect the USB Type-C cable.



If the headset does not operate correctly even after resetting, initialize the headset to restore factory settings.

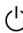
### Related Topic





- [Initializing the headset to restore factory settings](#)

## Initializing the headset to restore factory settings

---

If the headset does not operate correctly even after resetting, initialize the headset.

Turn off the headset while the USB Type-C cable is disconnected and then press and hold the  button and the - button simultaneously for 7 seconds or more.

The indicator (blue) flashes 4 times (   ), and the headset is initialized. This operation resets volume settings, etc., and deletes all pairing information. In this case, delete the pairing information for the headset from the device and then pair them again.

If the headset does not operate correctly even after initializing, consult your nearest Sony dealer.