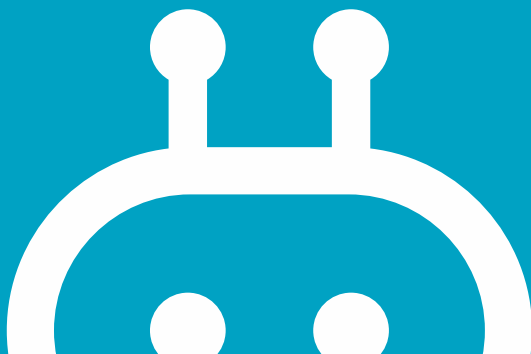




The QBOOK

Smart Home Security Camera





Contents

1. Meet Qubo
2. What's in the box?
3. Let's take a closer look
4. What will you need?
5. Let's get started
6. Choose a location
7. Do's and Don'ts
8. Mount your Home Security Camera
9. More than just a Home Security Camera
10. Safety Guidelines
11. Support

Meet

QUBO

Smart Home Security Camera

Anxious about social hygiene in the time of the Coronavirus pandemic? Concerned that your car might be stolen or damaged? Worried about the safety of your loved ones?

The Qubo Smart Home Security Camera will help you protect your loved ones, your car and maintain social hygiene, all by using just one device. The artificial intelligence-powered, all-weather Outdoor Security Camera is the solution to all your worries.

Smart AI-powered features such as Face Mask Detection, Secure Car Parking and Person Detection will help keep your surroundings secure, while its weather-resistant and dust-proof IP65 Camera ensures clear vision and uninterrupted functioning. Ensure the well-being of your loved ones with Face Mask Detection. Safeguard your car or your parking spot with Secure Car Parking, making sure the vehicle is parked safely in its spot. Remotely monitor your home to know what's happening anytime. Stay connected from anywhere with 2-Way Talk. Create Smart Routines, Set Modes and stay vigilant even in the dark with Night Vision.

Your World. Connected.



What's in the BOX?

1. Smart Home Security Camera
2. Power Adapter
3. Cable
4. Deco Plate (Attached)
5. Wall Anchors (2 units)
6. Wall Screws (2 units)
7. Deco Plate Screws (2 units)



Smart Home Security
Camera



Power
Adapter

Cable



Wall Screws



Deco Plate Screws



Wall Anchors



Deco Plate



LED states and meaning

Red LED blinking rapidly	Ready for setup
Red LED continuous	Not connected to Wi-Fi
Green LED continuous for 5 seconds	Device is ready
Green LED continuous	2-Way Talk begins

Let's take a closer LOOK

① Multicolour LED

② Camera

③ Mic

④ Movable Hinge Joint

⑤ Stand

⑥ Deco Plate

⑦ Speaker



Reset Button



SD Card Slot

What will you NEED?

Wi-Fi Network

- 2.4 GHz Wi-Fi (802.11 b/g/n) network
- Greater than 2 Mbps network upload speed

iOS

- iOS 11 or higher

Android

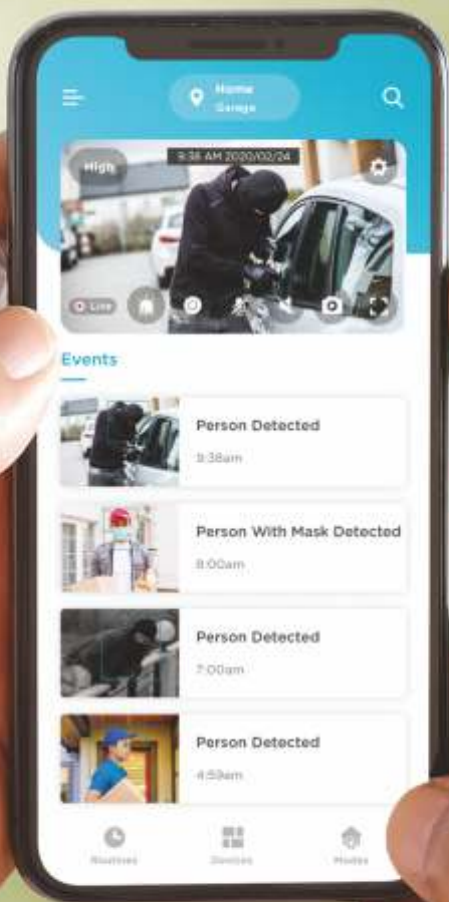
- Android 8.1 or higher

Power

- 110V - 240V

SD Card

- Maximum 128 GB



Let's get STARTED

Step 1

Plug in your Qubo Smart Home Security Camera: Connect the power cable that comes with the device to a power source via the power adapter.

Step 2

Download the Qubo App from Google Play or Apple App Store by scanning the QR Code below.



Step 3

Create an account on the Qubo App and follow the instructions to get started.

If you are an existing Qubo user, you can simply go to Add Device on the Qubo App.

Step 1



Step 2



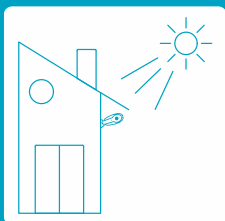
Step 3

It is highly recommended to set up the camera before mounting it.

Choose a Location

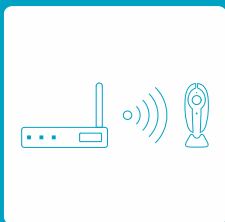
Try to minimize exposure to direct sunlight.

Qubo Smart Home Security Camera is designed to operate between 0°C to 45°C.



Keep it in range of your router.

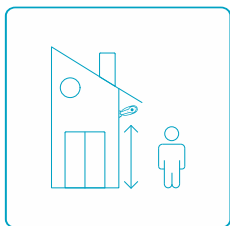
Install the Qubo Smart Home Security Camera in range of your Wi-Fi network.



Do's and Don'ts

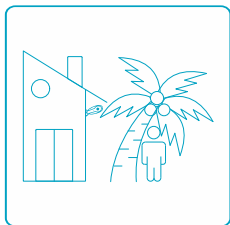
Place it up high.

We find that placing the camera 2-3 metres above the ground, tilted downwards, works best. Check live footage on the Qubo App to make sure you have a clear view.



Consider the surroundings.

Is a pole, plant or porch light blocking the view? It might interfere with the camera's view. If you notice glare, adjust the camera angle.



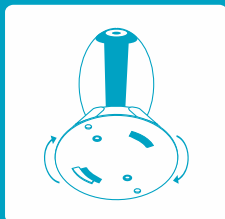
Mount your Home Security Camera

Step 1: Rotate the deco plate clockwise to expose the holes for the wall screws. The screw holes to fix the deco plate will also fall into place.

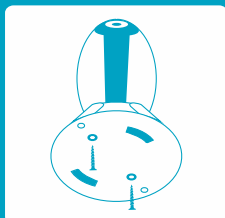
Step 2: Fix the deco plate into the base of the Qubo Smart Home Security Camera using the deco plate screws provided in the box. The deco plate screws can only be screwed into the smaller holes, towards the center of the deco plate.

Step 3: Fix the device on the wall using the wall screws. We recommend marking the spots where you intend to drill the holes. Use wall anchors (included) to hold the screws if you want to mount the device on hard surfaces such as brick or stone.

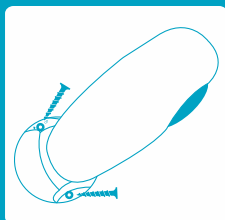
Step 1



Step 2



Step 3



More than just a Home Security Camera

Face Mask Detection

Get notified when the Qubo Smart Home Security Camera detects someone who is not wearing a face mask.

Secure Car Parking

Qubo Smart Home Security Camera allows you to create a safety zone around your car through the Qubo App. The device will notify you instantly if your vehicle goes out of the designated parking zone.

Disclaimer:

Face Mask Detection works up to 5 meters away from the device. Secure Car Parking works up to 20 meters away from the device. Absence of ambient light could impact the functioning of these features.

These are both beta features. We would love to hear your feedback.



Safety Guidelines

Use responsibly. Read all instructions and safety information before use.

 Failure to follow these safety instructions could result in fire, electric shock, other injury or damage.

- Do not immerse the device in any kind of liquid.
- Do not attempt to dry the device using an external heat source such as a microwave oven or a hair dryer.
- Clean the device with a dry, soft cloth. Do not use abrasive or harsh chemicals.
- Keep the device and all its components out of reach of children and pets.
- Do not expose the device to steam or extreme temperatures. The safe operating temperature for this device is between 0°C and 45°C. Keep the device out of direct sunlight.
- This device does not have an on/off button. Unplug the power adapter to turn off the device.
- Only use the power adapter and cable included with the device. If the power adapter or cable appear to be damaged, stop using it immediately and contact Qubo Customer Care.

- Do not plug multiple devices into the same wall socket.
- Install the device in accordance to the building and city code.
- All Qubo products and services are meant for ages 18 and above.
- This device is meant to be used as a monitoring device for personal use only. This is not intended to be used as a safety product.
- This device does not alert, signal or trigger any kind of response via a panic button or siren.
- This device is intended for non-time critical control and management of data and property.
- Our products and services will require certain input parameters to perform hassle free; including but not limited to an active internet connection and live power supply.
- Users are solely liable for storing and managing the data and information that is stored on the device or via services. We are not responsible for the loss or management of such data.
- Do not touch the device or wires connected to the device during lightning.

Support

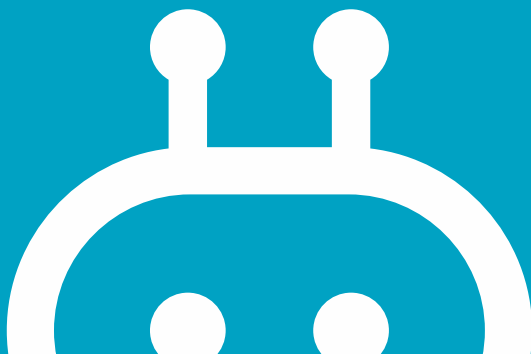
In case you need further help setting up this device:

- Visit the support section on our website (www.quboworld.com) and download the detailed user manual.
- To watch a step-by-step setup guide, visit our YouTube page.
- Contact Qubo Customer Care centre at 1800-572-5757.

Disclaimers:

1. For optimal performance, the device requires a Wi-Fi upload speed of more than 2 Mbps.
2. Hero Electronix Pvt. Ltd. reserves the right to make changes to existing services without prior notice, at its sole discretion.
3. Images used are for reference purpose only. Actual product might vary in terms of colour and composition.
4. All related logos are trademark of Hero Electronix Pvt. Ltd.
5. Certain features may not be available at the time of launch.





Connected Smart Devices from



**Hero
Electronix**

Hero Electronix Pvt Ltd.

503, Rectangle - 1, D-4, Saket District Centre,
New Delhi - 110017

www.quboworld.com

helpdesk@quboworld.com

1800-572-5757

Follow us on

