

## 'PUREIT COPPER+ MINERAL RO+UV+MF' WARRANTY DETAILS

### Product Warranty

The 'Pureit Copper+ Mineral RO+UV+MF' guarantees that you will get 'As safe as boiled water' as described in 'Pureit Copper+ Mineral RO+UV+MF' Unique Technology' section as long as the 'Pureit Copper+ Mineral RO+UV+MF' is used in the manner specified in the user manual.

01. The Consumables including the Pre-Sediment Filter, Pre-RO Carbon Filter, Mesh Filter, Reverse Osmosis Membrane, UV Reactor, Post-RO Carbon Filter, Micro Filter, Membrane and Copper Module will not be covered under warranty.
02. The warranty does not cover external booster pump, pressure reducing valve which is bought as an accessory to the purifier.
03. All other components including the electrical parts will have a 12-month warranty against the manufacturing defects.

This warranty is subject to the following conditions:

The customer will register with the company at the time of purchase by calling Pureit Call Centre and get the purifier installed through company's service technician.

Inspection and test report of the company's office/service centre/authorised dealer will be final and binding. Under the warranty, the company will determine the repairs/alterations required or carried out, or certifying working of the 'Pureit Copper+ Mineral RO+UV+MF' thereafter.

The company's obligation under this warranty shall be limited to repairing or providing replacement of parts, which are found to be defective. The company or its authorised customer care centre/licensed service provider reserves the right to retain any part(s) or component(s) replaced at its discretion, in the event of a defect being noticed in the equipment during the warranty period.

The company's liability under this warranty shall in no event, and under no circumstances, exceed the price paid by the customer.

This warranty is confined to the first purchaser of the product only and is not transferable.

In the event of repairs of any part(s) of the 'Pureit Copper+ Mineral RO+UV+MF', this warranty will thereafter continue and remain in force only for the unexpired period of the warranty.

The warranty is issued at Mumbai, and courts at Mumbai shall have exclusive jurisdiction over matters covered or flowing from this warranty.

The company's liability under this warranty shall in no event, and under no circumstances, exceed the price paid by the customer.

In the event of repairs of any part(s) of the 'Pureit Copper+ Mineral RO+UV+MF', this warranty will thereafter continue and remain in force only for the unexpired period of the warranty.

The warranty is issued at Mumbai, and courts at Mumbai shall have exclusive jurisdiction over matters covered or flowing from this warranty.

The company's liability under this warranty shall in no event, and under no circumstances, exceed the price paid by the customer.

In the event of repairs of any part(s) of the 'Pureit Copper+ Mineral RO+UV+MF', this warranty will thereafter continue and remain in force only for the unexpired period of the warranty.

The warranty is issued at Mumbai, and courts at Mumbai shall have exclusive jurisdiction over matters covered or flowing from this warranty.

The company's liability under this warranty shall in no event, and under no circumstances, exceed the price paid by the customer.

In the event of repairs of any part(s) of the 'Pureit Copper+ Mineral RO+UV+MF', this warranty will thereafter continue and remain in force only for the unexpired period of the warranty.

The warranty is issued at Mumbai, and courts at Mumbai shall have exclusive jurisdiction over matters covered or flowing from this warranty.

The company's liability under this warranty shall in no event, and under no circumstances, exceed the price paid by the customer.

In the event of repairs of any part(s) of the 'Pureit Copper+ Mineral RO+UV+MF', this warranty will thereafter continue and remain in force only for the unexpired period of the warranty.

The warranty is issued at Mumbai, and courts at Mumbai shall have exclusive jurisdiction over matters covered or flowing from this warranty.

The company's liability under this warranty shall in no event, and under no circumstances, exceed the price paid by the customer.

In the event of repairs of any part(s) of the 'Pureit Copper+ Mineral RO+UV+MF', this warranty will thereafter continue and remain in force only for the unexpired period of the warranty.

The warranty is issued at Mumbai, and courts at Mumbai shall have exclusive jurisdiction over matters covered or flowing from this warranty.

The company's liability under this warranty shall in no event, and under no circumstances, exceed the price paid by the customer.

In the event of repairs of any part(s) of the 'Pureit Copper+ Mineral RO+UV+MF', this warranty will thereafter continue and remain in force only for the unexpired period of the warranty.

The warranty is issued at Mumbai, and courts at Mumbai shall have exclusive jurisdiction over matters covered or flowing from this warranty.

The company's liability under this warranty shall in no event, and under no circumstances, exceed the price paid by the customer.

In the event of repairs of any part(s) of the 'Pureit Copper+ Mineral RO+UV+MF', this warranty will thereafter continue and remain in force only for the unexpired period of the warranty.

The warranty is issued at Mumbai, and courts at Mumbai shall have exclusive jurisdiction over matters covered or flowing from this warranty.

The company's liability under this warranty shall in no event, and under no circumstances, exceed the price paid by the customer.

In the event of repairs of any part(s) of the 'Pureit Copper+ Mineral RO+UV+MF', this warranty will thereafter continue and remain in force only for the unexpired period of the warranty.

The warranty is issued at Mumbai, and courts at Mumbai shall have exclusive jurisdiction over matters covered or flowing from this warranty.

The company's liability under this warranty shall in no event, and under no circumstances, exceed the price paid by the customer.

In the event of repairs of any part(s) of the 'Pureit Copper+ Mineral RO+UV+MF', this warranty will thereafter continue and remain in force only for the unexpired period of the warranty.

The warranty is issued at Mumbai, and courts at Mumbai shall have exclusive jurisdiction over matters covered or flowing from this warranty.

The company's liability under this warranty shall in no event, and under no circumstances, exceed the price paid by the customer.

In the event of repairs of any part(s) of the 'Pureit Copper+ Mineral RO+UV+MF', this warranty will thereafter continue and remain in force only for the unexpired period of the warranty.

The warranty is issued at Mumbai, and courts at Mumbai shall have exclusive jurisdiction over matters covered or flowing from this warranty.

The company's liability under this warranty shall in no event, and under no circumstances, exceed the price paid by the customer.

In the event of repairs of any part(s) of the 'Pureit Copper+ Mineral RO+UV+MF', this warranty will thereafter continue and remain in force only for the unexpired period of the warranty.

The warranty is issued at Mumbai, and courts at Mumbai shall have exclusive jurisdiction over matters covered or flowing from this warranty.

The company's liability under this warranty shall in no event, and under no circumstances, exceed the price paid by the customer.

In the event of repairs of any part(s) of the 'Pureit Copper+ Mineral RO+UV+MF', this warranty will thereafter continue and remain in force only for the unexpired period of the warranty.

The warranty is issued at Mumbai, and courts at Mumbai shall have exclusive jurisdiction over matters covered or flowing from this warranty.

The company's liability under this warranty shall in no event, and under no circumstances, exceed the price paid by the customer.

In the event of repairs of any part(s) of the 'Pureit Copper+ Mineral RO+UV+MF', this warranty will thereafter continue and remain in force only for the unexpired period of the warranty.

The warranty is issued at Mumbai, and courts at Mumbai shall have exclusive jurisdiction over matters covered or flowing from this warranty.

The company's liability under this warranty shall in no event, and under no circumstances, exceed the price paid by the customer.

In the event of repairs of any part(s) of the 'Pureit Copper+ Mineral RO+UV+MF', this warranty will thereafter continue and remain in force only for the unexpired period of the warranty.

The warranty is issued at Mumbai, and courts at Mumbai shall have exclusive jurisdiction over matters covered or flowing from this warranty.

The company's liability under this warranty shall in no event, and under no circumstances, exceed the price paid by the customer.

In the event of repairs of any part(s) of the 'Pureit Copper+ Mineral RO+UV+MF', this warranty will thereafter continue and remain in force only for the unexpired period of the warranty.

The warranty is issued at Mumbai, and courts at Mumbai shall have exclusive jurisdiction over matters covered or flowing from this warranty.

The company's liability under this warranty shall in no event, and under no circumstances, exceed the price paid by the customer.

In the event of repairs of any part(s) of the 'Pureit Copper+ Mineral RO+UV+MF', this warranty will thereafter continue and remain in force only for the unexpired period of the warranty.

The warranty is issued at Mumbai, and courts at Mumbai shall have exclusive jurisdiction over matters covered or flowing from this warranty.

The company's liability under this warranty shall in no event, and under no circumstances, exceed the price paid by the customer.

In the event of repairs of any part(s) of the 'Pureit Copper+ Mineral RO+UV+MF', this warranty will thereafter continue and remain in force only for the unexpired period of the warranty.

The warranty is issued at Mumbai, and courts at Mumbai shall have exclusive jurisdiction over matters covered or flowing from this warranty.

The company's liability under this warranty shall in no event, and under no circumstances, exceed the price paid by the customer.

In the event of repairs of any part(s) of the 'Pureit Copper+ Mineral RO+UV+MF', this warranty will thereafter continue and remain in force only for the unexpired period of the warranty.

The warranty is issued at Mumbai, and courts at Mumbai shall have exclusive jurisdiction over matters covered or flowing from this warranty.

The company's liability under this warranty shall in no event, and under no circumstances, exceed the price paid by the customer.

In the event of repairs of any part(s) of the 'Pureit Copper+ Mineral RO+UV+MF', this warranty will thereafter continue and remain in force only for the unexpired period of the warranty.

The warranty is issued at Mumbai, and courts at Mumbai shall have exclusive jurisdiction over matters covered or flowing from this warranty.

The company's liability under this warranty shall in no event, and under no circumstances, exceed the price paid by the customer.

In the event of repairs of any part(s) of the 'Pureit Copper+ Mineral RO+UV+MF', this warranty will thereafter continue and remain in force only for the unexpired period of the warranty.

The warranty is issued at Mumbai, and courts at Mumbai shall have exclusive jurisdiction over matters covered or flowing from this warranty.

The company's liability under this warranty shall in no event, and under no circumstances, exceed the price paid by the customer.

In the event of repairs of any part(s) of the 'Pureit Copper+ Mineral RO+UV+MF', this warranty will thereafter continue and remain in force only for the unexpired period of the warranty.

The warranty is issued at Mumbai, and courts at Mumbai shall have exclusive jurisdiction over matters covered or flowing from this warranty.

The company's liability under this warranty shall in no event, and under no circumstances, exceed the price paid by the customer.

In the event of repairs of any part(s) of the 'Pureit Copper+ Mineral RO+UV+MF', this warranty will thereafter continue and remain in force only for the unexpired period of the warranty.

The warranty is issued at Mumbai, and courts at Mumbai shall have exclusive jurisdiction over matters covered or flowing from this warranty.

The company's liability under this warranty shall in no event, and under no circumstances, exceed the price paid by the customer.

In the event of repairs of any part(s) of the 'Pureit Copper+ Mineral RO+UV+MF', this warranty will thereafter continue and remain in force only for the unexpired period of the warranty.

The warranty is issued at Mumbai, and courts at Mumbai shall have exclusive jurisdiction over matters covered or flowing from this warranty.

The company's liability under this warranty shall in no event, and under no circumstances, exceed the price paid by the customer.

In the event of repairs of any part(s) of the 'Pureit Copper+ Mineral RO+UV+MF', this warranty will thereafter continue and remain in force only for the unexpired period of the warranty.

The warranty is issued at Mumbai, and courts at Mumbai shall have exclusive jurisdiction over matters covered or flowing from this warranty.

The company's liability under this warranty shall in no event, and under no circumstances, exceed the price paid by the customer.

In the event of repairs of any part(s) of the 'Pureit Copper+ Mineral RO+UV+MF', this warranty will thereafter continue and remain in force only for the unexpired period of the warranty.

The warranty is issued at Mumbai, and courts at Mumbai shall have exclusive jurisdiction over matters covered or flowing from this warranty.

The company's liability under this warranty shall in no event, and under no circumstances, exceed the price paid by the customer.

In the event of repairs of any part(s) of the 'Pureit Copper+ Mineral RO+UV+MF', this warranty will thereafter continue and remain in force only for the unexpired period of the warranty.

The warranty is issued at Mumbai, and courts at Mumbai shall have exclusive jurisdiction over matters covered or flowing from this warranty.

The company's liability under this warranty shall in no event, and under no circumstances, exceed the price paid by the customer.

## 'PUREIT COPPER+ MINERAL RO+UV+MF' WARRANTY DETAILS

This warranty shall not cover any consequential or resulting liability, damage or loss to property or life arising directly or indirectly out of any defect in the water purifier. The company's obligation under this warranty shall be limited to repair or providing replacement of defective parts only under the warranty period.

The warranty is not applicable in any of the following cases:

01. The completed warranty card is not presented to authorised service personnel at the time of service of the product.
02. The product is not operated according to instructions given in the operating instruction booklet.
03. The device is not installed in the proper procedure specified.
04. Any defect caused due to improper electrical circuit outside the device in the house or by any defective electrical supply.
05. Defects are caused by improper or reckless use, which shall be determined by the company personnel.
06. Any repair work is carried out by the persons other than authorised service personnel.
07. The damages caused by due to transportation or shifting is not covered by warranty.
08. Defects are due to causes beyond control like lightning, abnormal voltage, acts of god or while in transit or service center or purchaser's residence. (normal voltage range specified 230V +/-10% with 50 Hz). Customer shall ensure that a stabilizer is installed in those areas where voltage is not available within the warranty range (230V +/- 10%). The stabilizer should be of any reputed manufacturer.
09. The warranty will automatically terminate after 12 months expiry of the warranty period even though the device may not be in use for any time during the warranty period for any reason.
10. Only courts in Mumbai will have the jurisdiction for settling any claims.
11. The serial number of the device or any part thereof is damaged, defaced, altered, obliterated, or tampered with or removal for any reason whatsoever.
12. House failure caused due to improper electrical circuitry or any electricals outside the device or erratic voltage in the house will not be covered under the product's warranty. Cost of both the visit and fuse replacement will be borne by the consumer.

This warranty is valid in India only.

Notwithstanding anything to the contrary contained in, or implied by this warranty:

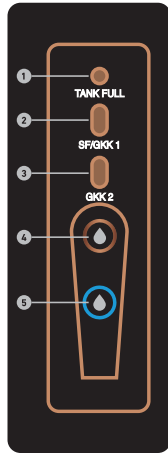
The company's liability under this warranty shall be limited only to defects in the 'Pureit Copper+ Mineral RO+UV+MF' which occur under the conditions of normal operation of the 'Pureit Copper+ Mineral RO+UV+MF' and which are determined by the company or its authorised agents as occurring or resulting from or attributable to negligence, abuse, misuse, faulty care, operation or maintenance or repairs, alterations to the 'Pureit Copper+ Mineral RO+UV+MF' or any part thereof by others.

### General

For the purpose of this warranty, the following expressions shall have the following meanings respectively:

- The 'Pureit Copper+ Mineral RO+UV+MF' shall mean the 'Pureit Copper+ Mineral RO+UV+MF' described in the invoice.
- The customer shall mean the purchaser of the 'Pureit Copper+ Mineral RO+UV+MF' from the company or the company's authorised dealer who is a party to the invoice.
- The company shall mean Hindustan Unilever Limited.
- 'Invoice' shall mean the invoice issued for the 'Pureit Copper+ Mineral RO+UV+MF' by the company or its authorised dealer to the customer describing the 'Pureit Copper+ Mineral RO+UV+MF' and indicating, inter alia, the total purchase price thereof, the name of the customer, and the place where the 'Pureit Copper+ Mineral RO+UV+MF' is to be delivered.
- 'User manual' shall mean the instructions for installation, use and maintenance contained in the leaflet published by the company, and available online to the Customer at the time of sale of the 'Pureit Copper+ Mineral RO+UV+MF'.
- Visit the Pureit website for more detailed instructions on cleaning/maintenance of your purifier.
- Warranty doesn't cover any damage/other issue arising out of ingress of external/foreign material (like dust, insects, ants, other pests) in the water purifier as it is the responsibility of the consumer to keep the area around the purifier clean and free of pests/dust.

## LED INDICATOR GUIDE



- 1. TANK FULL**
- SOLID GREEN**  
Tank full
  - SOLID RED**  
Low / No input water

- 2. SF / GKK1**
- SOLID GREEN**  
GKK 1 / SF is safe to use
  - BLUE BLINKING**  
Replace / clean SF\*
  - RED BLINKING**  
Advance alert to replace GKK 1  
After every 345 days of clock running time or 385 hours of pump running time, whichever is earlier, post device installation or GKK2 replacement.

- RED SOLID**  
Auto-shut off, replace GKK 1  
After every 360 days of clock time or 400 hours\*\* of pump running time, whichever is earlier, post-device installation or GKK-2 replacement.

- 3. GKK 2**
- SOLID GREEN**  
GKK 2 is safe to use
  - RED BLINKING**  
Advance alert to replace GKK 2  
After every 705 days of clock running time or 785 hours of pump running time, whichever is earlier, post device installation or GKK2 replacement.
  - RED SOLID**  
Auto-shut off, replace GKK 2  
After every 720 days of clock running time or 800 hours of pump running time, whichever is earlier, post device installation or GKK2 replacement.

- RED, BLUE, GREEN BLINKING IN SEQUENCE**  
Electric Fault

- 4. COPPER RO WATER**
- YELLOW SOLID**  
Copper RO water is dispensing
  - YELLOW BLINKING**  
Auto-Cleaning Mode, water cannot be dispensed
  - RED SOLID**  
Fault, water cannot be dispensed

- 5. RO WATER**
- BLUE SOLID**  
RO water is dispensing
  - RED SOLID**  
Fault, water cannot be dispensed

\*While the Germkill Kit and the Sediment Filter have a fixed replacement schedule, you might be required to clean/change the SF in the interim depending on the quality of your input water. If the External Sediment Filter is not replaced/cleaned in time (when the blue blinking happens), it may affect the performance of the purifier.

\* Permeate flow rate and recovery are based on standard test conditions and may vary depending on input water quality, TDS, pressure and life of Filter elements.

\*\*\* Input water quality and TDS content are important determinants of output water quality.

\*\*\*\* If input pressure exceeds 30 PSI, please install a company provided pressure reducing valve at an additional cost. If the pressure is lesser than 10 PSI then you need to buy 'Pressure enhancing pump' at an additional cost. Device should not be installed in a house where input pressure is greater than 60 psi.

\*\*After every 400 hours of pump running time or 360 days of clock time, whichever is earlier, the respective Germkill Kit needs to be changed. Every 400 hours of pump running time typically gives 4000 litres of purified water under test conditions of 10 PSI input pressure, 750 ppm TDS and 25 °C temperature. Any variations from the test conditions will lead to variations in the filtered life.

## FAQs

**How does Pureit Copper+ Mineral RO+UV+MF work?**

Pureit Copper+ Mineral RO+UV+MF has a 7 stage purification system that ensures you get 'Safer than boiled water'™. It also removes excess total dissolved salts (TDS) to make the water tastier.

**What is the storage capacity of Pureit Copper+ Mineral RO+UV+MF?**

Pureit Copper+ Mineral RO+UV+MF has a storage tank capacity of upto 8 Litres under running water. The process of filling the storage tank is fully automatic. When you take water out of the tank the purification process automatically refills the storage tank.

**How much time it takes to purify water in Pureit Copper+ Mineral RO+UV+MF?**

Pureit Copper+ Mineral RO+UV+MF can purify water upto 28 litres per hour. However, the time taken to purify is influenced by life of the filters, the input water pressure, and other impurities present in water.

**How will I get new Consumables/Membranes and Copper module replaced?**

You need to call the Pureit Helpline and order for a Germkill Kit™. A technician will visit your place to replace it, at a nominal cost.

**Can I drink the first purification cycle of water from the purifier?**

After Pureit Copper+ Mineral RO+UV+MF is installed or whenever the Germkill Kit™ (s) are replaced, discard the first cycle of water (8 litres) that is filled in the storage tank.

**What should I do if there is no water being dispensed from the spout?**

In case you cannot dispense water from the spout, first check whether the power supply is on. If it is on, then check if there are any fault indicators on, or "SF/GKK" indicator is blinking. Get either the fault resolved or Germkill Kit™ replaced. If none of these indicators are lit up on the indicator panel, then check if the ball valve is closed. If none of these cases are true, then please call Pureit helpline for assistance.

**Can I open and service my purifier?**

It is not recommended to open and service the device yourself. Call the Pureit helpline if you face any issue which requires servicing and opening the device.

**Can I use any type of water to purify through my Pureit Copper+ Mineral RO+UV+MF?**

Pureit Copper+ Mineral RO+UV+MF will purify "potable" water for removal of hardness and other impurities to give you safe drinking water. If the input water has impurities normally not present in drinking water (high iron/ turbidity/ microbial contamination etc.) or water is from unknown source (river/lake/pond/borewell etc.) then suitable pre-treatment may be required.

**The Advance Alert System™ did not give me 15 days warning before the purifier stopped working. Why is it so?**

There may be several reasons for this: While the Germkill Kits and the Pre-Sediment Filter have a pre-determined life, depending on your input water quality the Pre-Sediment Filter might need a replacement/cleaning even before the purifier gives you an alert. In such cases, please contact Pureit helpline and get the Pre-Sediment Filter replaced/cleaned. The purifier will communicate the alert only if the purifier is in a switched on condition during the scheduled alert time. Post the completion of the scheduled alert time, Auto Shut off\*\* of water will be activated automatically for GKK, even if the purifier is in a switched off condition.

**Does Pureit Copper+ Mineral RO+UV+MF remove arsenic, fluoride and nitrates?**

Yes, RO technology can remove arsenic, fluoride and nitrates.

**Can I use the reject water?**

It is not recommended to use rejected water for any kind of consumption (drinking or cooking). It can probably be used for gardening or floor cleaning.

**What should I do if any part of the purifier is broken?**

Please call Pureit helpline to guide you on any

## TECHNICAL SPECIFICATIONS

Pureit Copper+ Mineral RO+UV+MF	
Height	~447 mm
Width	~350 mm
Depth	~361 mm
Weight	~9.5 kg
Flow rate*	Up to 28 litres per hour
Storage tank capacity	Upto 8 litres <sup>†</sup>
7-Stage Purifying Technology	PP Melt Blown Pre-Sediment Filter, Pre-RO Carbon Filter, Mesh Filter, Reverse Osmosis Membrane, UV Reactor, Post-RO Carbon Filter and Micro Filter Membrane
Membrane type	Thin-film composite spiral wound
Pump type	Diaphragm pump, 24V dc
% Recovery*	Typically 45%
TDS reduction***	90% (min)
Input water pH range	pH range 6.5-8.5, Temperature range 10°C- 40°C
Power rating	60 Watts
Pressure rating	10-30 PSI****
Rated Voltage	100-240V.a.c 50/60 Hz (100-300V.a.c 50/60 Hz)
Material of construction for plastic parts	Food safe, non-toxic, engineering grade plastics
Length of Power Cord	1.5 metres
Total Dissolved Solids	Upto 2000 mg/lit<
Total hardness	500 mg/lit (max.)
Iron	0.3 mg/lit (max.) <sup>†</sup>
Turbidity	1NTU (max.)

Germkill Kit™		
Material of construction	Food safe, non-toxic, engineering-grade plastics	
Germkill Kit™-1	Pre-Sediment Filter – 1 No.	Pre-RO Carbon Filter – 1 No.
	Mesh Filter – 1 No.	Post-RO Carbon Filter – 1 No.
Germkill Kit™-2	Pre-Sediment Filter – 1 No.	Pre-RO Carbon Filter – 1 No.
	Mesh Filter – 1 No.	Post-RO Carbon Filter – 1 No.
Germkill Kit™-2	Copper Module – 1 U	TDS Modulator – 1 No.
	RO Membrane – 1 No.	
Germkill performance standard	Meets stringent international criteria for microbiologically safe drinking water – e.g., Environmental Protection Agency (EPA), USA	

\* Technical specifications are subject to change or improvement without prior notice.

> In case the TDS is >1000 PPM, a company provided anti-scalant is recommended to be installed.

This has to be purchased at extra cost.

>> If the iron content in the input water is more, it is recommended to install a company provided iron filter at an additional cost.

<sup>†</sup> 7.6 to 8 litres in running water conditions.

5

# Welcome to the Pureit family



World's largest selling purifier company<sup>1</sup>

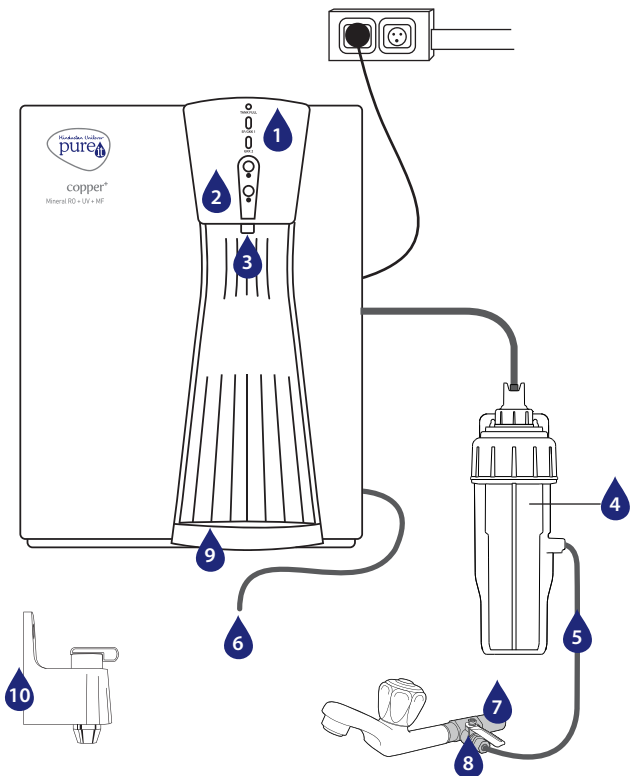


6





## KNOW YOUR PUREIT COPPER+ MINERAL RO+UV+MF



01. LED Display Panel
02. Touch buttons – Copper Enriched Water & Ambient RO Water
03. Water Dispensing Outlet
04. Pre-sediment Filter
05. Inlet Water Tube
06. Reject Water Tube
07. Diverter
08. Ball Valve
09. Drip Tray
10. Manual Dispense Tap

## UNIQUE FEATURES



### COPPER CHARGE TECHNOLOGY™

A unique modern technology that charges water with 99.8% pure copper, in real time



### PRECISE COPPER DOSING\*

Infuses right amount of copper in every glass of water.



### DUAL WATER DISPENSING

Two buttons gives you the choice of RO water and copper charged RO water.



### INTELLIGENT COPPER CLEANING MODE

Smartly senses and schedules copper auto-cleaning, for fresh copper infusion at all times.



### ADVANCED 7 STAGE PURIFICATION WITH RO+UV+MF

That ensures 100% RO purified water.



### LARGE STORAGE CAPACITY

Upto 8 litres\* storage capacity of purified water so that you never run out of RO water.



### DOUBLE PURITY LOCK

Digital Advance Alert System, alerts you 15 days\*\* before life of the Germkill Kit gets over and Auto Shut off stops water if filter is not changed, providing 100% guarantee of safe and sweet water.



### UNITED STATES ENVIRONMENT PROTECTION AGENCY (USEPA) COMPLIANT\*

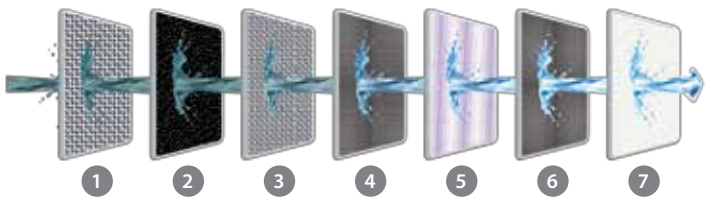
Meets the toughest safety standards by removing 1 Cr virus and 10 Cr bacteria from 1L water.



### 100% FOOD GRADE PLASTIC\*\*\*

Prevents harmful toxins from leaching into water, unlike non-food grade plastics.

## UNIQUE TECHNOLOGY



This is a graphic representation of filters

An advanced purifier that brings together modern technology and traditional goodness to enhance your family's health. It's advanced 7 stage purification process with RO+UV+MF purifies water and its proprietary Copper Charge Technology™ charges it with goodness of copper.

### 1. Pre-Sediment Filter (SF)

Removes fine and coarse particulate impurities/dirt and improves life of the Carbon Filter.

### 2. Pre-RO Carbon Filter

Removes chlorine and organic impurities such as harmful pesticides. It also absorbs bad taste and odor-causing organic compounds from water.

### 3. Mesh Filter

Filters water further to ensure removal of finer particulate impurities.

### 4. RO Membrane

Removes dissolved salts, hardness, pesticides and heavy metals like arsenic, lead and mercury. It also removes microbial contaminants like bacteria, virus, protozoa and cysts.

### 5. UV Chamber

Acts as an additional stage of purification to further inactivate bacteria, virus and parasites to deliver safe water.

### 6. Post RO Carbon Filter

This level of purification acts as a polisher and enhances the taste of purified water.

### 7. Micro Filtration Membrane

Micro Filtration Membrane is stage after Post-RO and UV, which ensures that the water is purified not once but thrice.

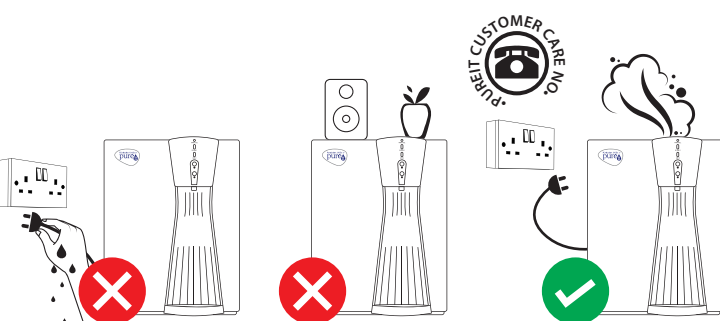
## INSTALLING YOUR PUREIT COPPER+ MINERAL RO+UV+MF

1. The purifier should be installed by a trained Pureit technician
2. It can be wall-mounted or used as a table top purifier
3. The purifier should be placed in area which is free of ants/insects/other pests.
4. The purifier should be placed close to the plumbed inlet connection (not more than 2 metres).
5. Do not install the purifier above any electric socket
6. Avoid sharp bends to the pipes of the product
7. Do not use an extension cord
8. Make sure you test the input water TDS (Total dissolved salts) before installing the purifier. The maximum input TDS should not exceed 2000 PPM.

## TAKING CARE OF PUREIT COPPER+ MINERAL RO+UV+MF

1. Use only the plug provided with the purifier
2. The purifier should not be connected to any hot water tap. Do not run hot water over 45°C through the purifier
3. Make sure that the power is kept on to dispense the water. Press the Touch button to dispense water from the storage tank.
4. Water from waste water tube is not suitable for drinking. You can use that water for gardening or cleaning floors.
5. Store water only in the purifier and don't use bottles and containers. If you do so, water may get contaminated.

## KEEP YOURSELF SAFE

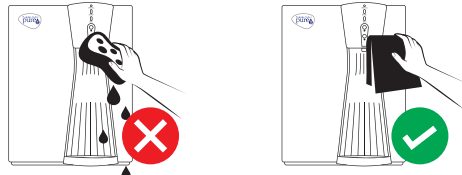


1. Do not open the purifier for cleaning or for any replacements. This can be done only by a qualified company personnel or an authorized agent.
2. Do not plug or unplug the power cord with wet hands to avoid any untoward accident due to electrical shock or fire.
3. Do not splash the filtration system with water while cleaning.
4. Do not put heavy or sharp objects on the purifier.
5. Never put the cord near stoves or heaters.
6. If the power cord is damaged, it must be replaced and not used again.
7. Always switch-off the "Ball Valve" and electrical power in case you notice any leakage from the purifier or you are going out of home for more than 2 days.
8. Ensure input pressure is more than 10 PSI and less than 30 PSI \*\*\*
9. In case UV lamp breaks, carefully sweep all the fragments, wipe the area with a wet towel, and dispose all the fragments including the used towel in a sealed plastic bag. Open windows to allow room to ventilate. Do not use vacuum cleaner. Hand over the bag to the service technician for proper disposal of the same when he visits to replace UV lamp.
10. In case of any smoke or burning smell, switch-off power, remove the plug immediately and call us at 1860-210-1000.

\*\*\* If it is more than 30 PSI, you need to use 'Pressure reducing Valve' which must be bought at an additional cost. If the pressure is less than 10 PSI then you need to buy 'Pressure enhancing Pump' which can be bought at an additional cost. Ensure you buy them from the authorized service personnel of Pureit.

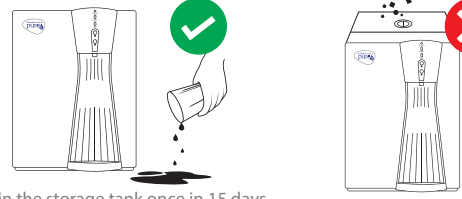
## CLEANING AND MAINTENANCE

### Water Dispensing Point



1. Do not use detergents, soap or wet cloth to clean the external parts. Use dry and soft cloth to clean the front cover. It is recommended to use a 3M mop cloth for cleaning.
2. Clean the dispenser by using disinfectants like bleach/hypochlorite (50 PPM available chlorine). Discard 2 litres of water after cleaning the dispenser.
3. Discard water from detachable tray & maintain in dry condition.

### Storage Tank



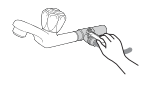
1. Discard the water in the storage tank once in 15 days.
2. Drain the water in the storage tank if purifier is not used for 2 days.
3. Clean the storage tank once a month with disinfectant solution. To purchase this solution, call us at 1860-210-1000 now.
4. How to clean the tank: Open the cleaning solution dispenser and put 1 ml of the disinfectant solution (10-15 drops) into the storage tank. (Ensure the tank is full). Drain the entire tank after 10 minutes.
5. No foreign material (like dust/ants/insects/other pests) should enter the storage tank. The filtered water in the storage tank may deteriorate in the process.
6. The point-of-use reverse osmosis drinking water treatment systems addressed by NSF-58 standard are designed to be used for the reduction of specific substances that may be present in drinking water supplies (public or private) which are considered to be microbiologically safe and are of known quality.
7. The output water may continue to have flora which are harmless and pose no health hazard to normal healthy adults and children.

**Disposal Guidelines (Electrical):** To prevent possible harm to the environment or human health from uncontrolled waste disposal, please separate electrical items in this product such as power supply adaptor, control circuits, LED panel, and wiring from other types of waste and recycle them responsibly to promote sustainable use of material resources. Contact either the retailer where you purchased this product, or local government office for details of where and how these items can be taken for environmentally safe recycling.

## CLEANING AND MAINTENANCE

### SF (Sediment Filter)

STEP 1 :  
Close the ball valve before opening ESF housing for cleaning



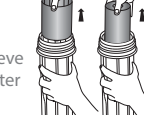
STEP 2 :  
Remove the water inlet tube which is attached to the housing



STEP 3 :  
Rotate the housing clock-wise and remove it completely from the cap



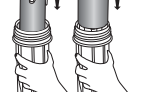
STEP 4 :  
Take out the grey coloured Carbon Sleeve and the Sediment Filter from the housing



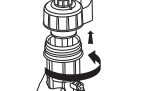
STEP 5 :  
Clean the Sediment Filter under jet of water, rub by hand / tap gently to clean



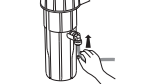
STEP 6 :  
After cleaning the Filter, put it back in the housing and then put the grey coloured Carbon Sleeve back into the housing



STEP 7 :  
Insert the housing inside the cap and rotate it anticlockwise to engage the threads. Ensure the housing is tightened till it's original marking



STEP 8 :  
Connect the water inlet tube to the housing

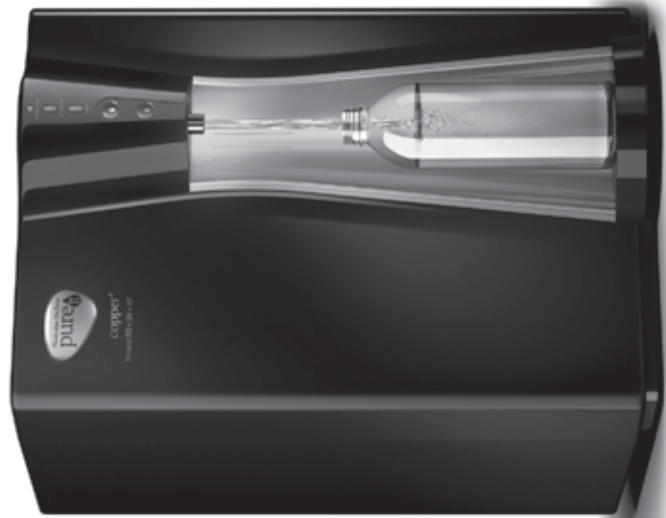


### ATTENTION

- Close the ball valve before opening SF housing for cleaning.
- Please do not use any abrasive / pointed tool to clean the Sediment Filter as it may damage the Sediment Filter.
- In case you observe the rubber ring is dirty, clean the rubber ring & fix it on the housing again properly.
- Clean the inner portion of the housing as well.
- If required, a Spanner for opening ESF housing can be bought from Pureit service technician.



Welcome to the Family of  
World's Largest Selling Purifier\*\*



Visit [pureitwater.com](http://pureitwater.com)  
for a detailed instruction manual

REACH PUREIT AT  
1860-210-1000  
[www.pureitwater.com](http://www.pureitwater.com)

\* Based on Unit Shipment Sales for 2016. Excludes pitchers and faucet mount system sales and includes only in-home point-of-use drinking water treatment system.

## Pureit Copper+ Mineral RO+UV+MF Water Purifier Warranty Registration Card

Serial No.: \_\_\_\_\_  
Date of Purchase: \_\_\_\_\_  
Purchaser's Name: \_\_\_\_\_  
Telephone No.: \_\_\_\_\_  
Address: \_\_\_\_\_  
Dealer's Name: \_\_\_\_\_  
Address: \_\_\_\_\_

Dealer's Signature  
(with rubber stamp)

Note:  
1. Please retain the bill of purchase.  
2. Please quote Serial number, Model and Date of Purchase in all your correspondence.

\*\*Advance Alert System will alert you 15 days before end of every 180 days (approximately) or 15 hours before completion of every 200 hours of pump running time, whichever is earlier. The purifier will communicate the alert only if the purifier is in a switched on condition during the scheduled alert time. Post the completion of the scheduled alert time, Auto Shut off\*\* of water will be activated automatically only for GKK, even if the purifier is in a switched off condition. \* Representation of the US EPA torture test of 4 log virus removed from 1 ml of contaminated water. \*\*Copper Charge Technology is a unique proprietary technology which is based on electrolytic dissolution of copper in water. \*Smart technology which ensures precise dosing in every glass of water. Consumption of 2 litres of copper charged RO water every day, will add upto approximately 30% of the RDA for copper for adults, as guided by the Indian Council of Medical Research, (ICMR) \*7.6 to 8 litres in running water conditions. \*\*\*Applicable for all water contact parts.