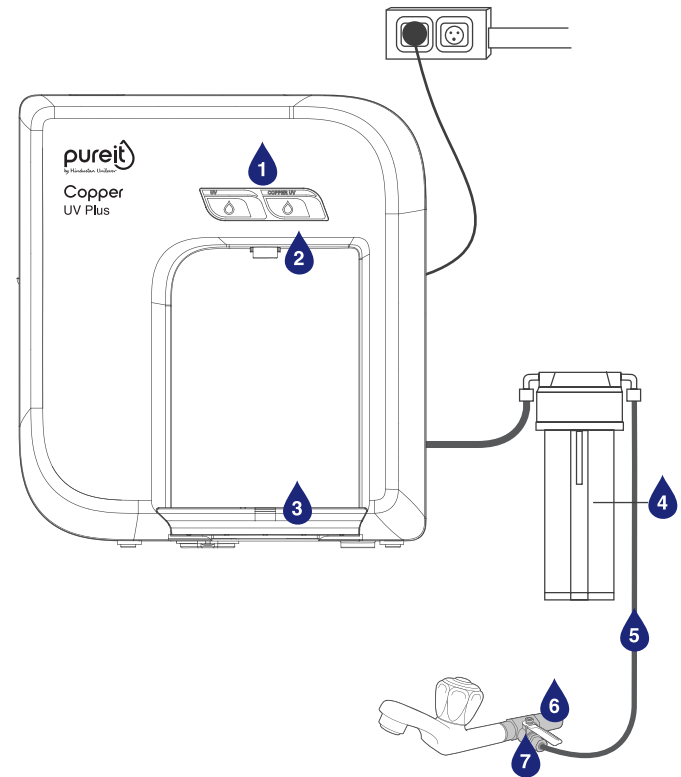




Welcome to the Pureit family

INSTRUCTION MANUAL

KNOW YOUR PUREIT COPPER UV PLUS



- 01. Touch buttons – UV Purified water and Copper Enriched Purified water
- 02. Water Dispensing Spout
- 03. Drip Tray
- 04. Pre-sediment Filter

- 05. Inlet Water Tube
- 06. Diverter
- 07. Ball Valve

UNIQUE FEATURES



ADVANCED UV SHIELD TECHNOLOGY

Best-in-class UV lamp gives you 100% Safe water by deactivating harmful illness-causing bacteria and viruses



DUAL PROTECT UV FLOW DESIGN

UV Reactor/Chamber with a unique flow design combines the right UV intensity & exposure to ensure 100% of the water is treated even at highest flow rate



DUAL WATER DISPENSING

Provides choice of UV water and copper enriched UV water



SMARTSENSE INDICATORS

Advance alert system that warns you 15 days~ in advance before your purifier GKK's end of life. Auto shut-off stops water flow when GKK life expires



COPPER ENRICH TECHNOLOGY

Enriches every drop of purified water with goodness of copper which is known to improve digestion, metabolism and overall health & well-being



MINERAL ESSENCE TECHNOLOGY

Retains essential minerals that are naturally present in water, giving you healthy drinking water everyday



USEPA STANDARDS OF PROTECTION

Removes 1 Crore viruses & 10 Crore bacteria in every litre of water & meets stringent criteria of environmental protection agency EPA (USA)



VOLTAGE SPIKE GUARD PROTECTION

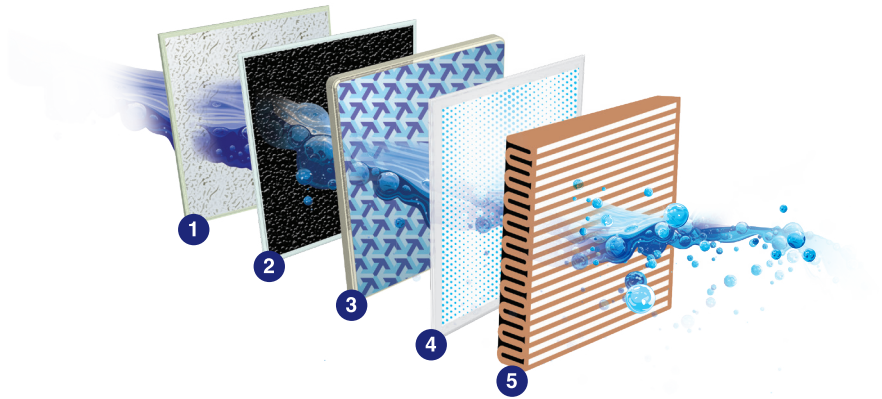
Protects your purifier from sudden voltage fluctuation ranging between 100-300Va.c, 50/60Hz



WATER SAVING MODE

If you leave the device unattended and water dispensing is on, water may get wasted. With this feature dispensing will stop automatically after 15 minutes of continuous dispensing

UNIQUE TECHNOLOGY



This is a graphic representation of filters

1. Sediment Filter (SF) (Raw Water Processor)

Removes fine and coarse particulate impurities/ dirt and improves life of the Carbon Filter.

2. Activated Carbon Filter

Removes chlorine and organic impurities like harmful pesticides. It also adsorbs bad taste and odour-causing organic compounds from water.

3. Mesh Filter

Ensures that no suspended/dirt particles enter the UV chamber.

4. High Intensity UV Chamber

High intensity UV rays ensure maximum UV intensity for inactivation of bacteria, virus and parasites to deliver safe water always.

5. Copper Enrich Cartridge (Applicable only for Copper UV dispensing)

Enriches every drop of purified water with goodness of copper which is known to improve digestion, metabolism and overall health & well-being.

INSTALLING YOUR PUREIT COPPER UV PLUS

1. The purifier should be installed by a trained Pureit technician.
2. Pureit Copper UV Plus has to be installed on the wall. In case you are using it in a table top condition, please either place its back touching fully on wall or otherwise hold it when you are operating any switch.
3. Do not install the purification unit where it could freeze.
4. Do not use an extension cord.
5. Please ensure that the purifier is not installed near a cooking range.
6. Do not install the purifier above an electric socket.
7. Avoid sharp bends to the tube that is connected to the purifier.
8. Install the purifier away from the sunlight.

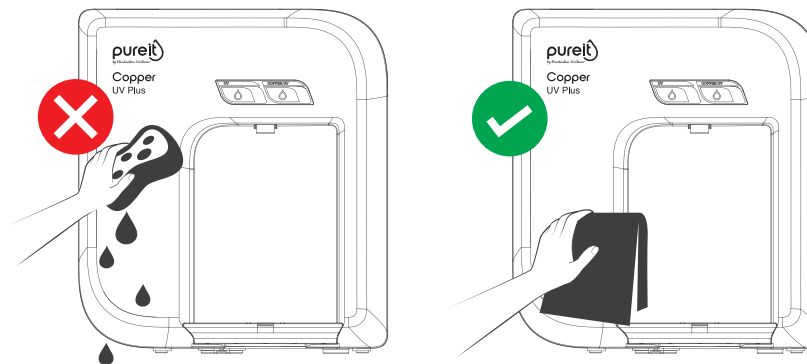
TAKING CARE OF PUREIT COPPER UV PLUS

1. After installation and GKK change, discard 10L~15L (7-10mins) before you start using your purifier.
2. If you are out of home, switch-off the purifier and turn-off the Ball Valve.
3. Ensure the input water temperature is between 10°C and 40°C. Do not connect the purifier to any geyser, heater etc.
4. Ensure that the area around and beneath the purifier is kept clean at all the time. Ensure that this area is free of ants/insects/other pests.
5. Don't drop any of the components, or the purifier as a whole from a height. This may cause the components to fracture or break, and the guarantee of getting water 'As safe as boiled water' will no longer be valid.

Disposal Guidelines (Electrical): To prevent possible harm to the environment or human health from uncontrolled waste disposal, please separate electrical items in this product such as power supply adaptor, control circuits, LED panel, and wiring from other types of waste and recycle them responsibly to promote sustainable use of material resources. Contact either the retailer where you purchased this product, or local government office for details of where and how these items can be taken for environmentally safe recycling.

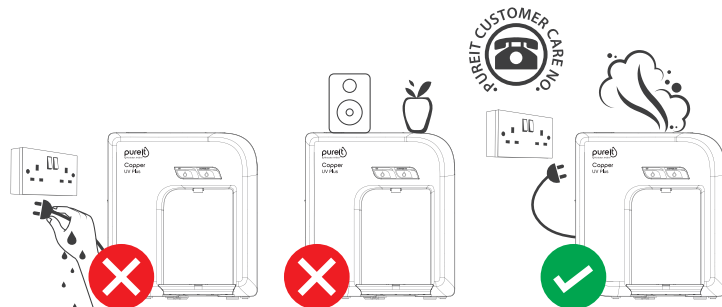
CLEANING AND MAINTENANCE

Water Dispensing Point



1. You can clean the purifier tap / spout using disinfectants like bleach/hypochlorite (approx. 50 ppm available chlorine). Discard 2 litres of water after cleaning the tap / spout. You can buy this disinfectant solution from authorised Pureit service technician.
2. External portion of the purifier must be cleaned using clean and wet cloth only. Do not use any detergent or soap.

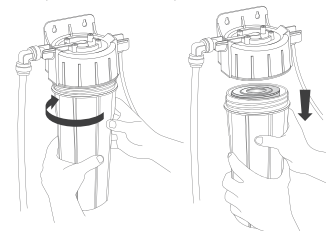
KEEP YOURSELF SAFE



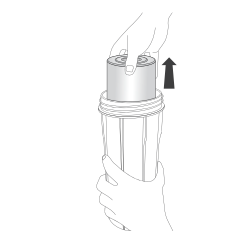
1. Do not plug or unplug the power cord with wet hands. Ensure the plug isn't wet while plugging in, or plugging out so as to avoid risks such as electrical shocks or fire. Plug the power cord in the right size socket to avoid sparks.
2. Do not try to open the purifier for any reason. This can be done only by the qualified company personnel or authorized agent.
3. If the power cord is damaged, it must be replaced and not used.
4. Do not light candles / diya on the purifier. Do not keep heavy or sharp objects, e.g. Radio etc. on the purifier.
5. In case you notice any smoke or burning smell from your purifier, please switch off the power, unplug the cord, turn off Ball Valve and call us at 1860-210-1000.
6. Please dispose of the used consumables like the Germkill Kit along with the other household waste through the municipal disposal system.
7. Do not use water not intended for drinking in Pureit System e.g. from abandoned or abused water bodies or water resources in which human, animal or industrial wastes are disposed or water that is extremely acidic or alkaline.
8. The output water may continue to have flora which is harmless and pose no health hazard to the normal healthy adults and children.
9. If you have not used purifier for more than 2 days, discard first 3-4 ltrs. of water from Pureit tap / spout by pressing copper UV dispense button.
10. Always rely on the Advance Alert System™ warning to change the Germkill Kit (GKK). Auto Shut-off is the only additional assurance of safety.
11. Never buy Copper UV Plus or the Germkill Kit (GKK) or spares from an unauthorized source. Always call on 1860-210-1000 and we will deliver and install a new GKK at your home.

CLEANING AND MAINTENANCE

SF (Sediment Filter)



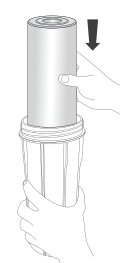
Rotate the housing clock-wise and remove it completely from the cap



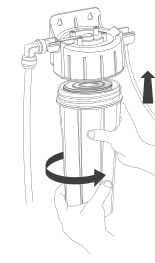
Take out the Sediment Filter from the housing



Clean the Sediment Filter under jet of water. rub by hand / tap gently to clean.



After cleaning the filter, put it back in the housing.



Insert the housing inside the cap & rotate it anticlockwise to engage the threads. Ensure the housing is tightened till its original marking.

⚠ ATTENTION

- Close the ball valve before opening SF housing for cleaning.
- The housing needs to be opened in wall mounted position only.
- Make sure the clamp is properly fixed on the wall & cap of housing.
- Keep the cap mounted on the wall. No need to remove the same.
- Please do not use any abrasive / pointed tool to clean the Sediment Filter as it may damage the Sediment Filter.
- In case you observe that rubber ring is dirty, clean the rubber ring & fix it properly on the housing again.
- Clean the inner portion of the housing as well.
- If required, a Spanner for opening ESF housing can be bought from Pureit service technician.

FAQS

How does Pureit Copper UV Plus purify water?

Pureit Copper UV Plus has a 4-stage purification system which ensures that you get water that is 'As safe as boiled water™' and meets the stringent standards set by the USEPA for Microbiologically safe drinking water. First, the water passes through the Sediment Filter which removes fine and coarse particulate impurities/dirt. The second stage is the Activated Carbon Filter™ that removes remaining dirt, chlorine and organic impurities like harmful pesticides. It also absorbs colour and odour causing organic compounds from water. Then the water passes through Mesh Filter, which ensures that no suspended / dirt particles enter the UV chamber. High intensity UV rays ensure maximum UV intensity for inactivation of bacteria, virus and parasites to deliver safe water always.

What is Advance Alert System™?

Pureit Copper UV Plus's Advance Alert System™ warns you 15 days* in advance before your consumable expires, so that you can get it replaced before the GKK life expires and purifier stops working. Please refer to the LED indicator panel instructions for details.

Does this mean that I need to change the UV lamp after every 6000* litres?

No. The UV lamp is designed to last typically for 10,000 working hours. You need to change only the GKK after typically 6000* litres of water has been purified.

Can I change the GKK?

It is not recommended for the users to change the GKK by themselves. Please call Pureit Helpline when you need to replace the GKK.

Can I drink the first purification cycle of water from the purifier?

No, it is recommended to throw the first 10-15 litres of water by pressing copper dispense button when the new Copper UV Plus purifier is installed, and also whenever the GKK is replaced. It will take only 7-10 minutes.

How much time does it take for water to dispense from any of the button(s)?

Usually it takes about 40 secs to dispense after power on/wake up from power saving mode. This ensures that the UV Lamp is completely warmed up to achieve the desired intensity for inactivation of bacteria, viruses & parasites delivering safe drinking water always.

Can I open and service my purifier?

It is not recommended to open and service purifier on your own. Call Pureit helpline if you face any issue which requires servicing and opening of the purifier.

What should I do if any part of the purifier is broken?

Please call the Pureit helpline number. Our technicians will visit your house and guide you on the repairs required. There will be a nominal visiting charge and you would need to buy the parts required.

What should I do if water pressure at my home is less than 5 psi?

Technicians will suggest you to purchase a booster pump, so that pressure of input water becomes appropriate for functioning of the purifier.

What should I do if water pressure at my home is more than 30 psi?

Technicians will suggest you to purchase a pressure regulating valve, so that water pressure inside device is regulated according to safety rating of 5-30psi.

What if I go on a vacation for more than 2 days and do not dispense water from purifier?

It is recommended to discard first 3-4 litres of water by pressing copper dispense button.

What if I do not dispense copper water from purifier?

If Copper UV water is not consumed for more than 12 hours, please dispense atleast 2-3 cups before use.





To know more
Contact Pureit helpline number
1860 210 1000
Or Visit: www.pureitwater.com