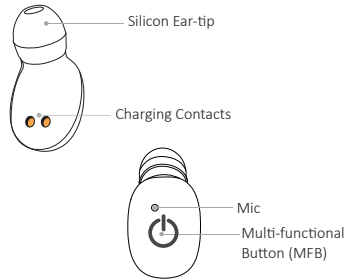




Tango True Wireless Twins

Instruction Manual

Product Introduction



Basic Functions

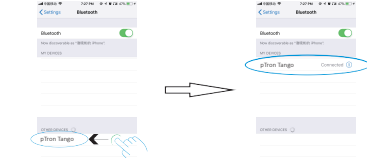
Switch On:

When the earbud is picked up from the charging box, it will Power On automatically. Otherwise, press the MFB for 3 seconds to Power ON manually. The blue & red LED indicator light will flash alternately to indicate that earbuds are ON, you will also hear the voice prompt “Power ON”.

Switch Off:

When the earbud is placed into the charging box, it will be Power Off automatically after activation of the charging state. Otherwise, long press the MFB for about 5 second on either earbuds to Power Off both the earbuds. The red LED indicator light will flash before going to switch off state. You will also hear the voice prompt as “Power OFF”.

Bluetooth Connection:



1. Left & Right Earbuds Matching.

a) Power ON both the L & R earbuds then both the earbuds will flash blue & red light alternately.

b) Now, wait for 5 seconds then both L & R earbuds will match to each other & only one earbud will flash blue & red light Alternately. Otherwise, double click on either earbud to match both Left & Right pieces. Once they get matched to each other you will hear a voice prompt as Left Channel & Right channel. When one earbud flashes blue & red light that means the earbuds are in Bluetooth mode & ready to pair with a phone or any other Bluetooth device.

2. Turn ON the Bluetooth of your Phone or Device.

3. Search for “pTron Tango” in your Bluetooth device name list & connect. After a successful connection, you will hear the voice prompt “pTron Tango is connected”.

Note:

- When using the earbuds for the first time, remove the insulation labels off the earbuds so that earbuds can be charged.
- Please always carry storage cum charging box with you.
- “pTron Tango” charging is available with 1500mAh high-density Li-ion Battery capacity. Which can also be used for the purpose of emergency charging of Mobile phones. USB 2.0 Port is available in the product for emergency phone charging purposes.

4. When you place the earbuds in the storage cum charging box, they will switch off automatically after the charging state is activated.

5. When both the earbuds are picked up from the charging case, they will switch on automatically and connect to the connected Bluetooth device.

To charge the Charging case please use Micro USB cable provided with the product.

Button Operations:

Answer/hang-up call: Short press the MFB of either earbuds once

Reject the Call: Short press the MFB of either earbuds twice

Play/pause: Short press the MFB of either earbuds once

Next song: Short press the MFB of either earbuds twice

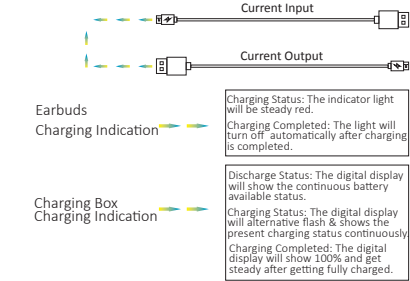
Previous song: Short press the MFB of either earbuds thrice

Google Assistance: Long press the MFB of either earbuds for 2 seconds

Power ON: Long press MFB of both earbuds for 3 seconds

Power OFF: Long press MFB of either earbuds for 5 seconds

Charging Instructions:



Product Specifications:

Connectivity: Advanced Bluetooth v5.0	Bluetooth Profiles : AVRCP V1.6, A2DP V1.3, HFP V1.7
Supported Frequency Band: 2.402GHz-2.480GHz	Music Play time: 3 Hours
Transmission Range: Up to 10 M (Open space)	Talk Time: 3 Hours
Speaker: 8mm, 32Ohm Dynamic Speaker	Standby Time: 120 Hours
Earbuds Battery : 2*50mAh, Li-Polymer	Charging Time: 1.2 Hours (Earbuds)
Charging case Battery: 1500mAh, Li-Polymer	Charging Input: DC5V/1A (Charging Case)
Charge Cycles: About 10times with charging case	Earbuds Weight: 3*4gm

Package Contents:

- Left & Right Earbuds
- Digital Display Charging case
- Micro USB cable
- Instruction Manual
- Two Extra pairs of ear-tips of medium & small size.

Attention:

- Please do not abuse this product, also do not keep with product with heavy metal objects, keep it away from high temperature and high humidity environment.
- Keep it away from Wi-Fi and routers and other high frequency transmitting devices, this will affect the signal reception of the unit, and may sound to be broken and disconnected.
- Please use this product within 10 meters range from the connected phone in a clear space environment.
- Please use a quality charger to charge the charging cum storage case.
- These earbuds can be connected to any Bluetooth enabled device.

Frequently Asked Questions:

1. Can we use only one earbud?

Yes, either earbuds can be used alone for music & call function.

2. How to connect Single earbud?

Just Power ON either of earbuds & search the new “pTron Tango” in your Bluetooth device and get it connected to use single earbud.

3. Only one earbud plays & second earbud doesn't connect?

Power ON both earbuds together & wait for 5 seconds to get paired with each other. Otherwise, double click on either earbud to match both Left & Right pieces. Once they get matched to each other you will hear a voice prompt as Left Channel & Right channel. Once they get paired with each only one earbud will flash blue & red light alternately. Now, turn ON Bluetooth of your device & get it connected.

4. Is Google Voice Function available?

Yes, just need to press MFB of either earbuds for 2 seconds to activate Google Assistance.

5. Connectivity: It supports all Bluetooth featured devices like Android/iOS/Windows/Smart LED TVs etc.

6. Charging: To charge the earbuds place them inside the charging case. To charge the charging case use the Micro USB cable provided with product & connect with any mobile phone adaptor.

Disclaimer:

The colors and specifications shown/mentioned in the user manual may differ from the actual product. Images shown are for representation purpose only. Other product logos and company names mentioned herein may be trademarks or trade names of their respective owners.