

## Additional Information

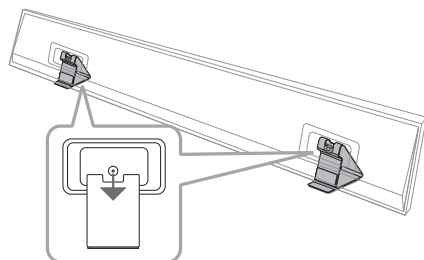
## Specification

Power consumption	Refer to the main label.
AC adapter	<ul style="list-style-type: none"> <li>Model : DA-50F25</li> <li>Manufacturer : Asian Power Devices Inc.</li> <li>Input : 100 - 240 V ~ 50 - 60 Hz</li> <li>Output : 25 V <math>\overline{\text{---}}</math> 2 A</li> </ul>
Dimensions (W x H x D)	Approx. 1446.0 mm x 150.0 mm x 32.5 mm
Bus Power Supply (USB)	5 V $\overline{\text{---}}$ 500 mA
Amplifier (Total RMS Output power)	420 W RMS

Design and specifications are subject to change without notice.

## Installing the stand

Fix the hooks of the unit on the stands as shown below.



When installing the sound bar with a stand, install it so that it does not cover the TV's remote sensor or screen.

To enjoy content containing Dolby Atmos® and DTS:X®, the connected device and content must support Dolby Atmos® and DTS:X®.

## OPEN SOURCE SOFTWARE NOTICE INFORMATION

To obtain the source code under GPL, LGPL, MPL, and other open source licenses, that is contained in this product, please visit <http://opensource.lge.com>. In addition to the source code, all referred license terms, warranty disclaimers and copyright notices are available for download.

LG Electronics will also provide open source code to you on CD-ROM for a charge covering the cost of performing such distribution (such as the cost of media, shipping, and handling) upon email request to [opensource@lge.com](mailto:opensource@lge.com).

This offer is valid for a period of three years after our last shipment of this product. This offer is valid to anyone in receipt of this information.



## SIMPLE MANUAL

## Wireless Sound Bar

Please read this manual carefully before operating your set and retain it for future reference.

To view the instructions of advanced features, visit <http://www.lg.com> and then download Owner's Manual. Some of the content in this manual may differ from your unit.

MODEL

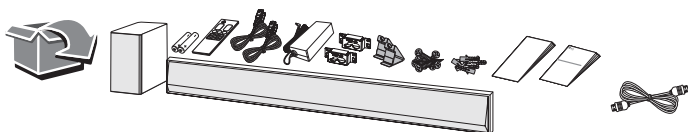
GX



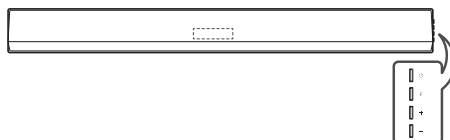
MFL71771623  
2012\_Rev03

[www.lg.com](http://www.lg.com)

Copyright © 2020 LG Electronics Inc. All Rights Reserved.

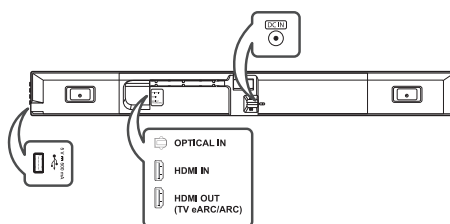


## Front Panel



⏻ (Standby) ..... Switches the unit ON or OFF.  
 F (Function) ..... Selects function.  
 +/- (Volume) ..... Adjusts volume.

## Rear Panel



DC IN ..... Connect to the AC adapter.  
 USB Port ..... Connect to a USB device.  
 OPTICAL IN ..... Connect to an optical device.  
 HDMI IN ..... Connect to device with HDMI OUT.  
 HDMI OUT (TV eARC/ARC) ..... Connect to a TV.

! Make sure to properly align and connect the optical cable; improper alignment may cause damage to the jack.

! **Rear Speakers Ready**  
 Ready for surround sound with Rear Speakers Kit sold separately. (SPK8-S)

## Subwoofer Connection

Place the wireless subwoofer near the sound bar and follow steps below.

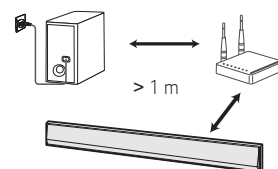
- 1 Connect the power cord of the sound bar and the wireless subwoofer to the outlet.
- 2 Turn on the sound bar.
  - The sound bar and wireless subwoofer will be **automatically** connected. The subwoofer's green LED turns on.

## Manual Subwoofer Connection

If the subwoofer does not make sound, try to connect manually.

- 1 Press **PAIRING** on the rear of the wireless subwoofer.
  - The green LED on the rear of the wireless subwoofer blinks quickly. (If the green LED does not blink, press and hold the **PAIRING**.)
- 2 Turn on the sound bar.
  - Pairing is completed. The green LED on the rear of the wireless subwoofer turns on.

! Keep the sound bar and the subwoofer away from the device (ex. wireless router, microwave oven, etc.) over 1 m to prevent wireless interference.

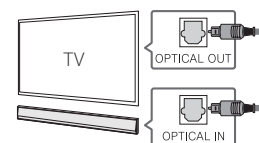


## TV Connection

Connect the sound bar and TV using Optical (A) or HDMI ARC (B).

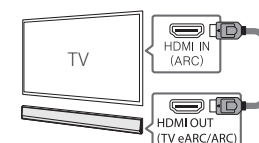
### A Optical Connection

- 1 Connect the sound bar to the TV using Optical cable.
- 2 Set up [External Speaker (Optical)] on your TV setting menu.



### B HDMI (ARC) Connection

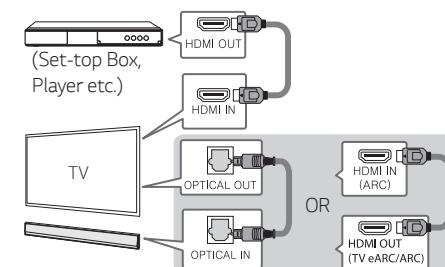
- 1 Connect the sound bar to the TV using HDMI cable.
- 2 Set up [External Speaker (HDMI ARC)] on your TV setting menu.



- ! HDMI connection is unavailable if your TV does not support HDMI ARC.
- If this unit is connected by OPTICAL and ARC at the same time, the ARC signal has a higher priority.

## Additional Device Connection

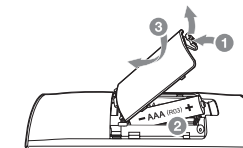
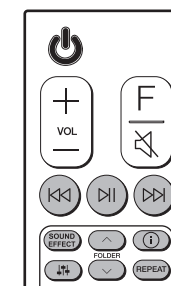
- 1 Connect to the external device like as follow.



- 2 Set the input source by pressing **F** repeatedly.

## Remote control

### Replacement of Battery



⏮/⏭: Skip/Search

⏸: Play/Pause

- **Bluetooth connection lock (BT LOCK):** Select the **Bluetooth** function by pressing **F** repeatedly. Long press **⏸** and press it again to limit Bluetooth connection to only BT and LG TV.

**SOUND EFFECT:** Selects a sound effect mode.

- **TV remote:** Long press **SOUND EFFECT** and press it again to use TV remote control.

**FOLDER** ^/∨: Searches a folder.

ⓘ: Displays the information of a file, an input source or connected **Bluetooth** device name.

- **Auto Power ON/OFF:** Long press ⓘ and press it again.

⏮/⏭: Adjusts sound level of each speaker.

- **Surround sound:** Long press ⏮/⏭ and press it again.

**REPEAT:** Listens to your files repeatedly or randomly.

! This product provides screws and wall plugs to fix the wall bracket to the wall. Please check the installation method through Owner's manual on the website ([www.lg.com](http://www.lg.com)).