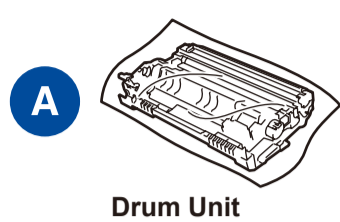
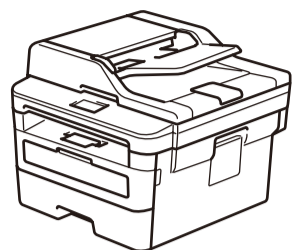




## Unpack the machine and check the components



**NOTE:**

- The components included in the box may differ depending on your country.
- The available connection interfaces vary depending on the model.
- Interface cables are not included. You must purchase the correct interface cable if you require one.

**USB cable**

We recommend using a USB 2.0 cable (Type A/B) that is no more than 2 metres long.

**Network cable**

Use a straight-through Category 5 (or greater) twisted-pair cable.

- The illustrations in this *Quick Setup Guide* show the MFC-B7715DW.

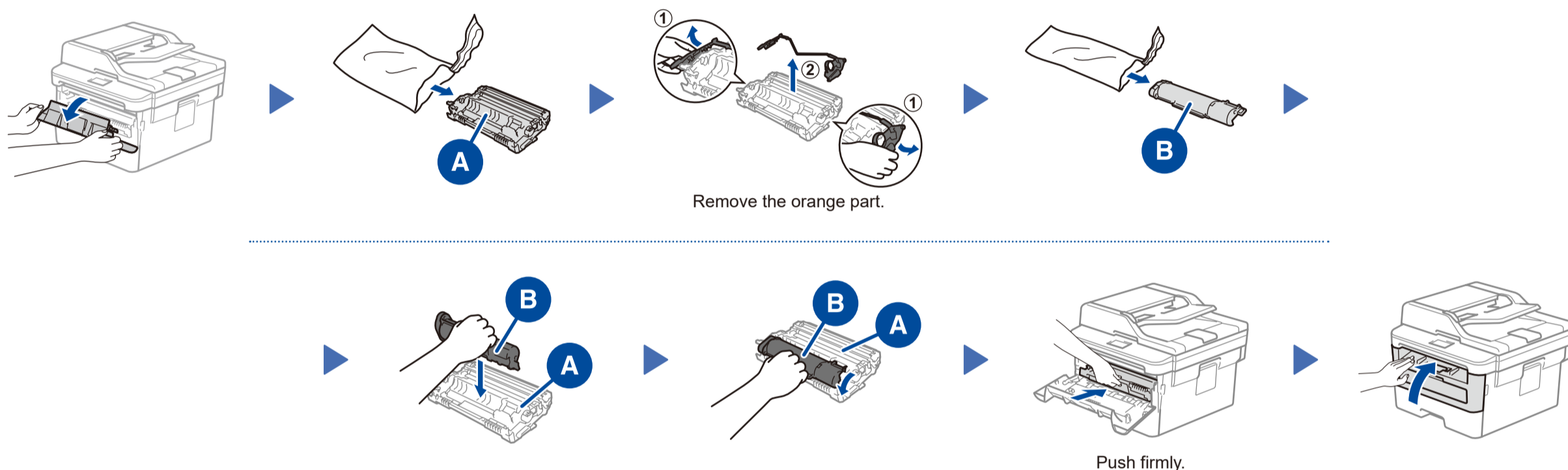
**Secure Network Access**

Your machine's default password is on the label on the back of the machine (preceded by "Pwd"). We strongly recommend you change it to protect your machine from unauthorised access.

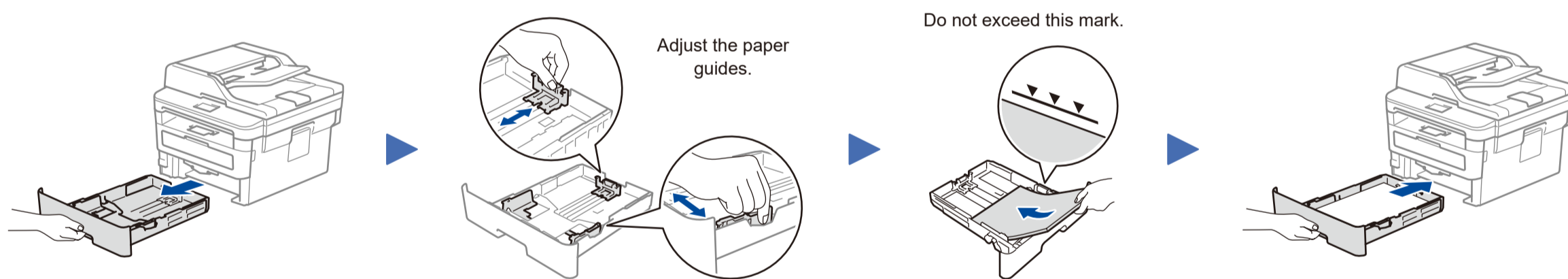


Watch our Video FAQs for help with setting up your Brother machine:  
[support.brother.com/videos](http://support.brother.com/videos).

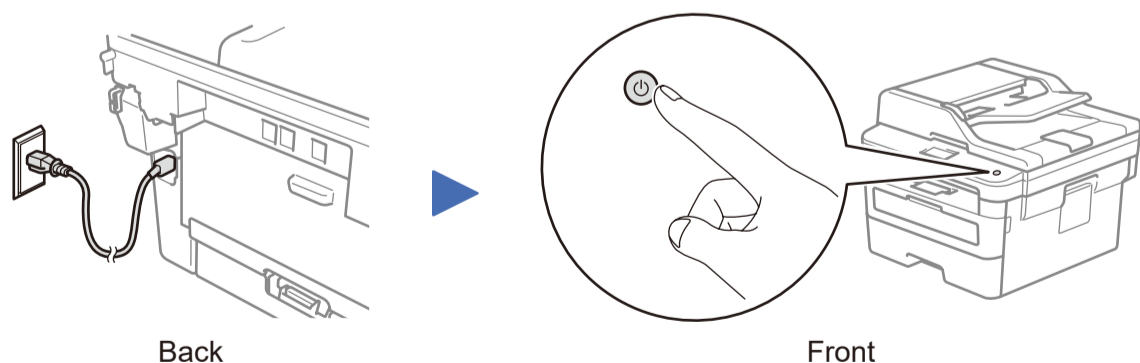
## 1 Remove the packing materials and install the drum unit and toner cartridge assembly



## 2 Load paper in the paper tray



## 3 Connect the power cord and turn the machine on



## 4 Select your country/language (Initial setup only)

After turning the machine on, you may be required to set your country or language (depending on your machine). If required, follow the on-screen instructions.

## 5 Select your language (if needed)

- (for DCP models)
  - Press **Menu**.
  - Press **▲** or **▼** to display [Initial Setup], and then press **OK**.
  - Press **▲** or **▼** to display [Local Language], and then press **OK**.

(for MFC models) Press **Menu**, **0**, **0**.
- Press **▲** or **▼** to select your language, and then press **OK**.
- Press **Stop/Exit**.



## 6 Select a device to connect to your machine

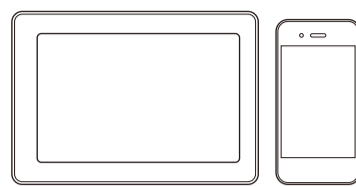
### Computer



Go to **7** and follow the instructions.

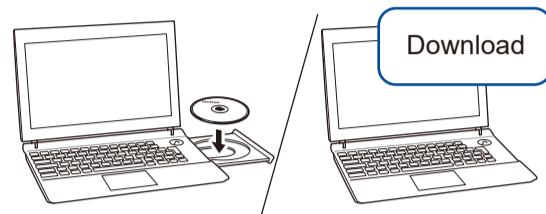
**NOTE:**  
We recommend configuring wireless settings from your computer.

### Mobile Device



Go to **8** and follow the instructions.

## 7 Connect your computer



Put the installation disc into your CD/DVD drive, or download the Full Driver & Software Package at:

For Windows®: [support.brother.com/windows](http://support.brother.com/windows)  
For Mac: [support.brother.com/mac](http://support.brother.com/mac)

If you are using a recently released operating system on your computer, visit the above websites for updated driver and software information.

▶ Follow the on-screen instructions and prompts.

For Windows®:  
If the Brother screen does not appear automatically, go to **Computer (This PC)**. Double-click the CD/DVD-ROM icon, and then double-click **start.exe**.

For Mac:  
For full driver functionality, we recommend choosing the **CUPS driver** when adding a printer.

▶ Finished

Brother regularly updates firmware to add features and apply bug fixes. To check for the latest firmware, visit [support.brother.com/up5](http://support.brother.com/up5).

### Can't Connect? Check the following:

Wireless network

▶ Restart your wireless access point/router (if possible).

Wired network

USB connection

▶ Disconnect the cable.

▶ Restart your machine and computer, and then go to **7**.

▶ If still not successful, go to **8**.

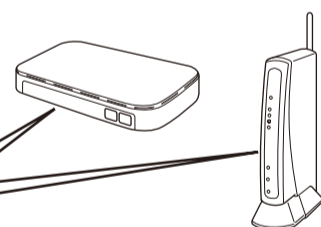
▶ If still not successful, visit [support.brother.com](http://support.brother.com) for FAQs & Troubleshooting.

## 8 Alternative wireless setup (Wireless models only)

Find your SSID (Network Name) and Network Key (Password) on your wireless access point/router and write them in the table provided below.

SSID (Network Name)	
Network Key (Password)	

SSID: XXXXXXXX  
Network key: XXXX



▶ To select each menu option, press ▲ or ▼, and then press **OK** to confirm. Select [Network] > [WLAN] > [Setup Wizard], and then press ▲.

Even if you do not have a wireless access point/router, you can connect your device and your machine directly. For additional wireless network support, go to [support.brother.com/wireless-support](http://support.brother.com/wireless-support).

▶ Select the SSID (Network Name) for your access point/router and enter the Network Key (Password).

▶ When the wireless setup is successful, the LCD displays [Connected].

▶ If setup is not successful, restart your Brother machine and your wireless access point/router, and repeat **8**.

### For Computer

Go to **7** to install software.

### For Mobile Device

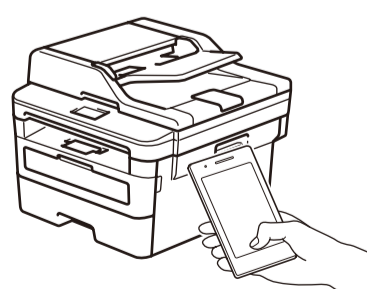
Go to **9** to install apps.

If you cannot find this information, ask your network administrator or wireless access point/router manufacturer.

## 9 Print or scan using your mobile device

Your mobile device must be connected to the same wireless network as your Brother machine.

Brother SupportCenter is a mobile app that provides the latest support information for your Brother product. Visit the App Store or Google Play™ to download.



AirPrint is available for Apple device users. You do not need to download any software to use AirPrint. For more information, see the *Online User's Guide*.



Download and install the Mopria® Print Service app from Google Play™ using your Android™ device.



Download and install our free application **Brother iPrint&Scan** from a mobile application store, such as the App Store, Google Play™ or Microsoft® Store using your mobile device.

### Optional apps

You can print from and scan to your mobile device using various apps. For instructions, see the *Online User's Guide*.



Additional Wireless Support: [support.brother.com/wireless-support](http://support.brother.com/wireless-support)

For FAQs, Troubleshooting, and to download software and manuals, visit [support.brother.com](http://support.brother.com). For product specifications, see the *Online User's Guide*.

© 2017 Brother Industries, Ltd. All rights reserved.